

# NAV-TV

[www.nav-tv.com](http://www.nav-tv.com)

3950 NW 120 Ave, Coral Springs, FL  
Tel. 561-955-9770 Fax. 561-955-9760

[info@nav-tv.com](mailto:info@nav-tv.com)

## NTG3 / NTG3E / NTG3SLK

NTV-KIT102/106/189



### Overview

**2009-up Mercedes GL/ML/R/E/CLS/SLK  
Backup camera / AV input / RSE / Video In Motion interface**

### Kit Contents



SMB to RCA  
NTV-CAB007



NTG3 Module  
NTV-ASY107



RCA Harness  
NTV-HAR057



Plug & Play T-Harness  
NTV-HAR081



USB Cable  
NTV-CAB009

**WARNING:** Check entire surroundings while backing. Do not become distracted by using COMAND.


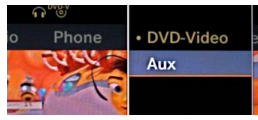
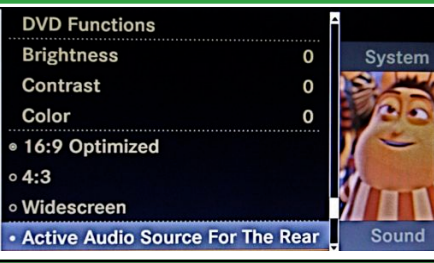


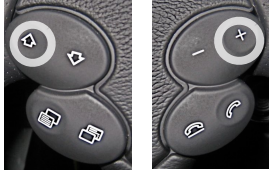

**Agreement:** End user agrees to use this product in compliance with all State and Federal laws. NAV-TV Corp. Would not be held liable for misuse of it's product.

If you do not agree, please discontinue use immediately and return product to place of purchase.

This product is intended for off-road use and passenger entertainment only.

## NTG3 / NTG3E /NTG3SLK

### 2009-up Mercedes GL/ML/R/E/CLS/SLK New Generation Backup camera / AV input / RSE / Video In Motion interface **Operation Instructions**

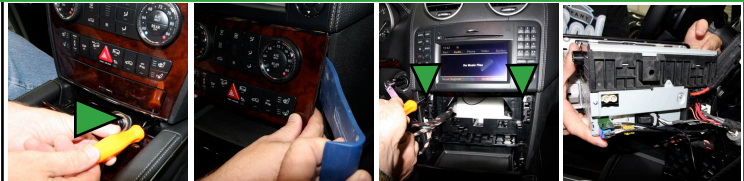
<p><b>To Activate Rear View Camera</b></p>	<p><b>Fig. 1 - Vehicle in Reverse</b></p>
<p>With the brake depressed and engine running, engage reverse gear.</p>	
<p>Rear View Camera will show on radio screen.</p>	
<p><b>To Activate AUX Video</b></p>	<p><b>Fig. 2 - AUX Video</b></p>
<p>Select "Video" Select "Aux"</p>	
<p><b>To Set Active Audio Source For the Rear</b></p>	<p><b>Fig. 3 - RSE</b></p>
<p>Select the source name at the bottom-left of the screen (example - "DVD-Video") Select "Activate Audio Source For The Rear" <i>Selected Audio source and DVD / AUX Video are now available for rear headphones and screens (if installed)</i></p>	
<p><b>To Activate Video in motion (GL, ML, R Class)</b></p>	<p><b>Fig. 4 - Video in motion</b></p>
<p>Double click the  (Voice Off) button. Repeat to de-activate video in motion. <i>NOTE: Navigation does not track while VIM is active.</i></p>	
<p><b>To activate Video in motion (E, CLS, SL Class)</b></p>	<p><b>Fig. 5 - Video in motion</b></p>
<p>Press VOL UP and SEEK UP simultaneously. Repeat to de-activate video in motion. <i>NOTE: Navigation does not track while VIM is active.</i></p>	
<p><b>To activate Video in motion (SLK Class)</b></p>	<p><b>Fig. 6 - Video in motion</b></p>
<p>Press VOL UP and VOL DOWN simultaneously. Repeat to de-activate video in motion. <i>NOTE: Navigation does not track while VIM is active.</i></p>	

## NTG3 / NTG3E / NTG3SLK Installation Instructions

### Remove Radio

1. Remove 2 TORX T20 Screws behind ashtray, unplug and remove ashtray.
2. Using a plastic trim tool, carefully pop out A/C control trim, Then unplug.
3. Remove 2 TORX T20 screws below radio, then move metal locking tabs DOWN.
4. Pull radio out and unplug.

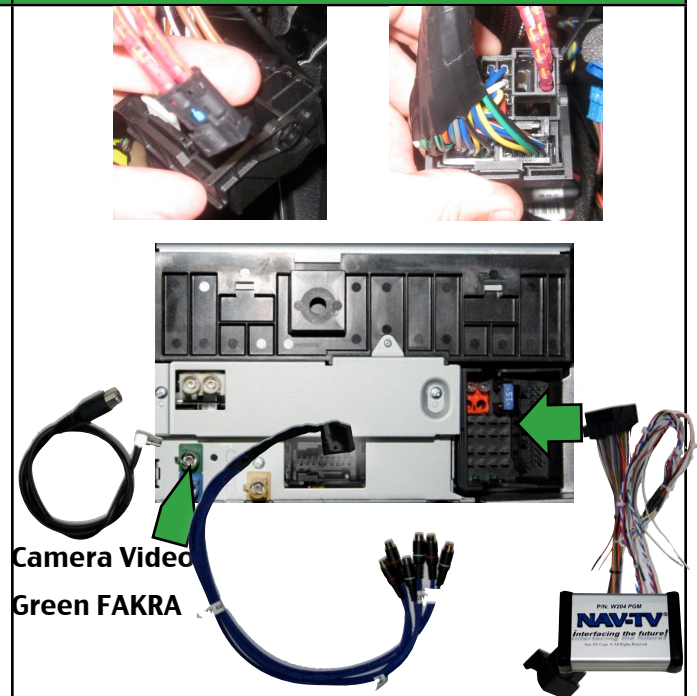
### Fig. 1 - Radio Removal (GL)



### Wiring - NTG3

1. Unplug factory power connector from radio.
2. Remove Fiber connector from factory plug by releasing the latch and pulling the connector outwards. Plug Fiber connector into supplied plug and play harness connector.
3. Plug in the NTG3 adapter harness to factory harness, Radio and NTG3 Module.
4. If adding Rear-view Camera: Plug video cable to Green FAKRA, Connect to Camera.
5. Plug supplied A/V harness into Black 18-pin connector. connect as needed: A/V out, AUX Video in, Secondary (RSE) Audio in.
6. For your convenience, The following OUTPUTS are included. DO NOT EXCEED 500mA !!!  
**White / Purple: +12V VIM Mode, 500mA**  
**White / Green: +12V Acc. OUT, 500mA**  
(connect to Camera or turn on for RSE)

### Fig. 2 - Plugs at rear of Radio



**NOTE: The 3.5mm Audio jack in the glovebox is shared for both AUX modes, AUX Audio and AUX VIDEO. If installing an additional A/V source such as Video ipod, Rear DVD Player etc., the AUX Audio port will be occupied.**

**We advise to use the secondary AUX Audio Labeled "REAR" on the AUDIO Menu as a substitute AUX Audio source and run a new 3.5mm jack or Stereo RCA's to the glovebox (Jacks not included).**

**Please inform your customer of the changes if needed.**

# NTG3 / NTG3E / NTG3SLK Programming Instructions

## Note: Prior to programming:

1. Shut the vehicle off and remove the key for 30 seconds, Then turn the key to IGN ON
2. Be certain the CLUSTER is displaying an AUDIO source. If programming fails, try putting the cluster on the SETTINGS menu.

Rear View Camera		GL, ML, R Class		All Features		E & CLS	
<b>ON:</b> Press and hold 6 seconds: <b>VR OFF + TALK</b>				<b>ON:</b> Press and hold 30 seconds: <b>VOL UP + SEEK UP</b>			
<b>OFF:</b> Press and hold 6 seconds <b>VR + TALK</b>				<b>OFF:</b> <b>Factory Reset E &amp; CLS</b> Press and hold 30 seconds: <b>VOL DOWN + SEEK DOWN</b>			
RSE		GL, ML, R Class		All Features		SLK	
<b>ON:</b> Press and hold 6 seconds: <b>VR OFF + VOL DOWN</b>				<b>ON:</b> Press and hold 30 seconds: <b>TALK + HANG</b>			
<b>OFF:</b> Press and hold 6 seconds: <b>VR + VOL DOWN</b>				<b>OFF:</b> <b>Factory Reset SLK</b> Press and hold 30 seconds: <b>UP + DOWN</b>			
AUX Video		GL, ML, R Class		<div style="background-color: #4CAF50; color: white; padding: 10px; border-radius: 15px; text-align: center;"> <p><b>During programming, the radio screen will display DIAGNOSIS, Then restart.</b></p> </div> <div style="background-color: #F44336; color: white; padding: 10px; border-radius: 15px; text-align: center; margin-top: 10px;"> <p><b>Important Note:</b> NTG3 Must learn the VIN and can not be re-installed in a different vehicle unless original vehicle has been reset to factory settings!</p> </div>			
<b>ON:</b> Press and hold 6 seconds: <b>VR OFF + HANG</b>							
<b>OFF:</b> Press and hold 6 seconds: <b>VR + HANG</b>							
Factory Reset		GL, ML, R Class					
Press and hold 30 seconds: <b>VR OFF + VR</b>							

# NAV-TV

INTERFACING THE FUTURE  
3950 NW 120th Ave, Coral Springs, FL 33432 TEL 561-955-9770 FAX

561-955-9760 [www.nav-tv.com](http://www.nav-tv.com) [info@nav-tv.com](mailto:info@nav-tv.com)

## NTG3 PRODUCT UPDATE

### FOR VEHICLES WITH RSE - TO ADD VIDEO IN AND VIDEO OUT

#### Overview-

This is an amendment to the existing documentation for vehicles with Rear Seat Entertainment (RSE). In which the customer wants to add audio/video in through the AUX port of the radio, without purchasing the Mercedes-Benz part.

#### Video in modification -

1. Remove the 18 pin RSE connector from behind radio.
2. Once removed, the connector cover needs to come off to gain access to the pins for removal.
3. Remove pins 1 and 2 from the factory connector. Be sure to insulate the wires (tape or heat shrink).

NOTE: The wire being removed will have a FAKRA connector on it 3" down.

4. Do the same procedure on the NAV-TV NTG3 video connector.
5. Re-insert the removed RCA from the NAV-TV connector and plug it into the factory connector, pins 1 and 2.

**NOTE:** Be sure that the signal of the RCA goes into pin 1 and the shield into pin 2.

6. Re-assemble the connector and plug it back into the radio.



#### Audio In -

*If vehicle has UCI – Multimedia Interface for Ipod*

- Audio will still be introduced via the 1/8" jack in the glove box using a 1/8" stereo audio jack.

*If vehicle doesn't have UCI –*

- You need to remove the RCA's from the 18 way NAV-TV connector. Once removed, re-insert into the factory connector in the following pin locations.
- Pin 8 – Audio Shield      Pin 9 – Left Audio      Pin 18 – Right Audio

### Video Out –

If video out is desired, using a cut RCA, solder the center conductor (video feed) to wire in pin position 5. The shield of the RCA gets soldered to the wire in pin position 6. Be sure to properly insulate connections. All connections are made at the factory 18 pin RSE connector behind the radio.

### Removal of pins from connector –

1. Using a small screw driver or pick tool, gently depress the pin release and pull wire back to remove from connector.
2. Before you reinsert the wire into the factory connector, be sure that the tab is pulled up just a little bit so that it will catch when it is reinserted into the factory connector.

