

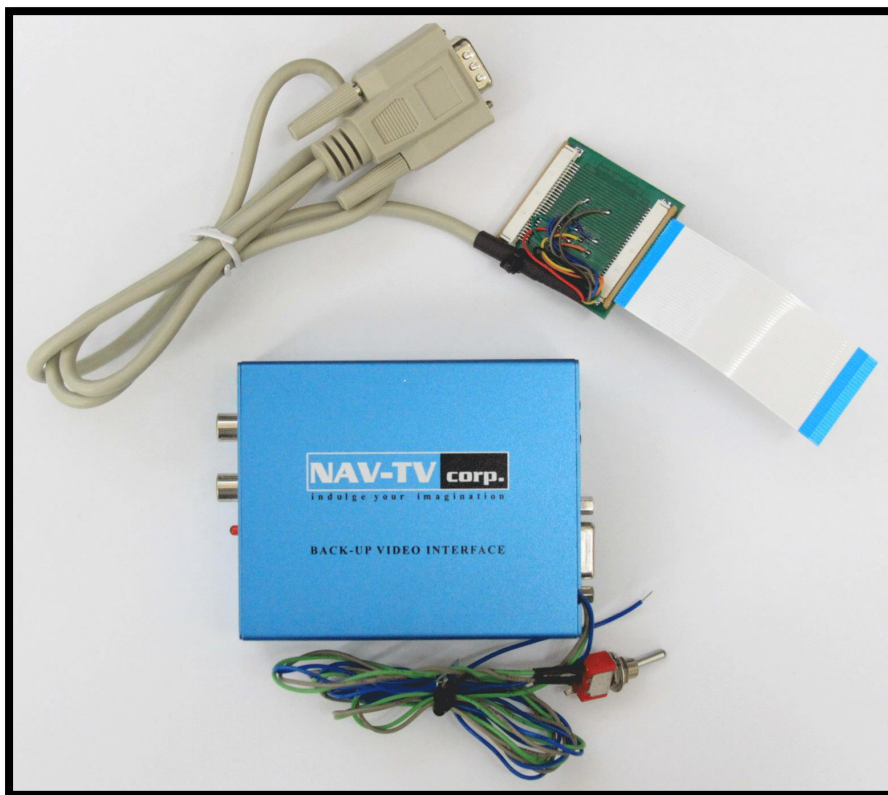
# NAV-TV

INTERFACING THE FUTURE

9350 NW 120<sup>th</sup> Ave, Coral Springs, FL 33065 TEL 561-955-9770 FAX 561-955-9760

[www.nav-tv.com](http://www.nav-tv.com) [info@nav-tv.com](mailto:info@nav-tv.com)

## ***BNT kit install manual***



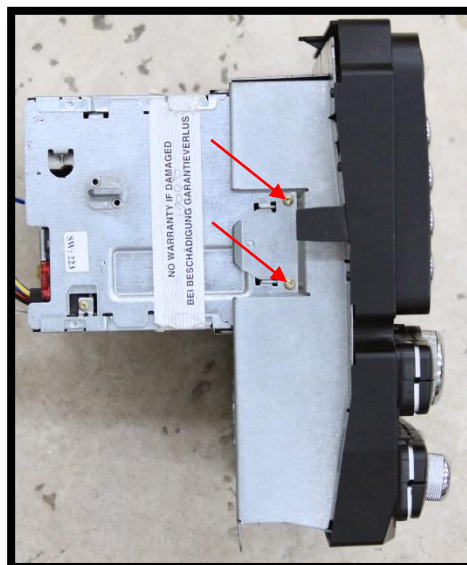
### Overview

The BNT kit allows the ability to add a backup camera and additional video input to the factory screen in Bentley Continental/GT and VW Phaeton vehicles. This install requires disassembly of the factory radio and should only be performed by professionals.

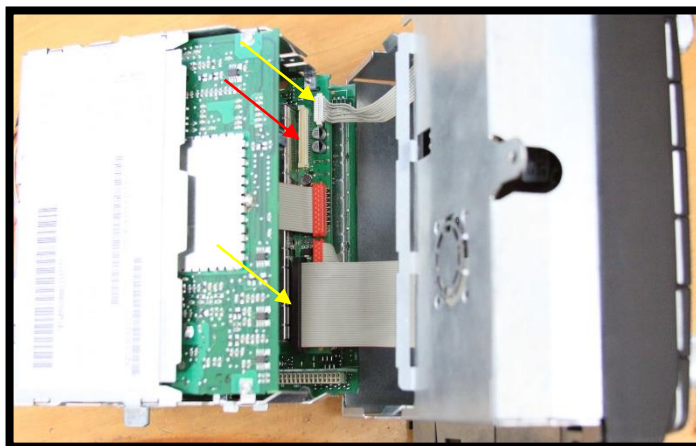
### Installation

1. Remove the factory radio: remove the trim surrounding the radio, then remove 5 screws that secure the radio into the dashboard. Pull the radio from the dash, disconnect all connected harness and bring it to a clean bench with a soft surface.

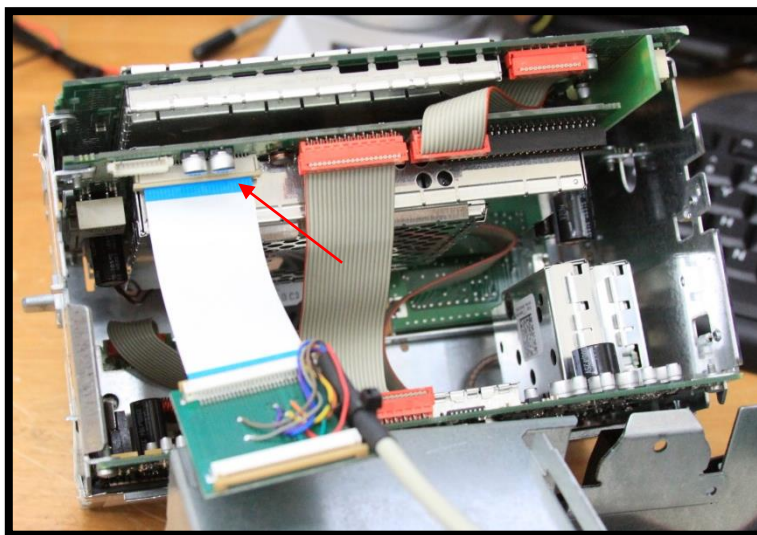
2. Separate the front half of the radio from the back half by removing 2 torx screws from each side of the radio.



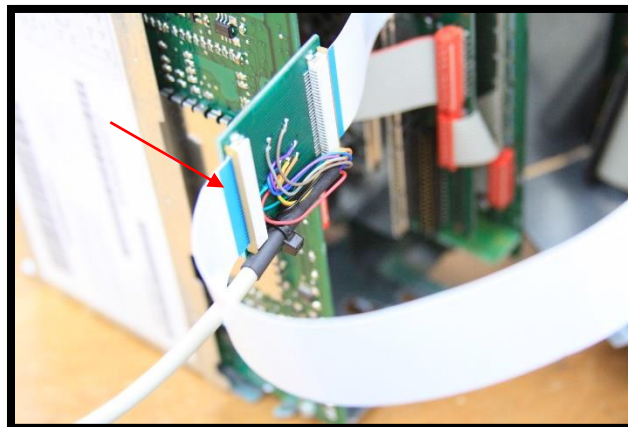
3. Carefully disconnect the ribbon that connects to the screen indicated by the red arrow. Disconnect the other 2 cables indicated by the yellow arrows.



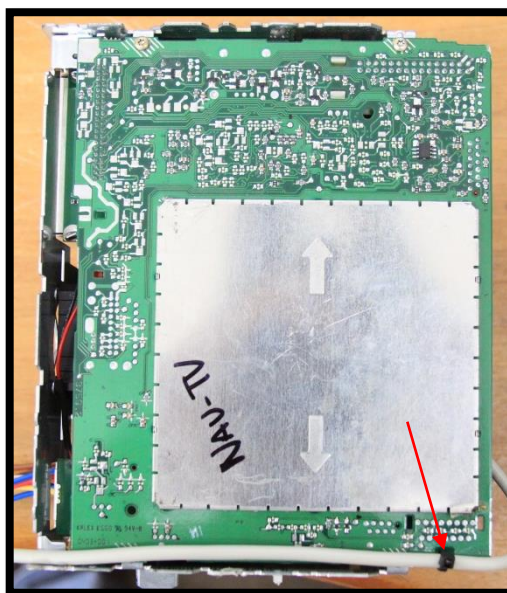
4. Insert the free end of the ribbon from the BNT board into the radio's display connector (near 2 small caps). Be certain the pins are facing the correct direction, and that it is seated firmly.



5. Connect the free end of the Factory LCD ribbon that was disconnected in step 3 to the other side of the BNT board.



6. Use 3M double sided stick tape (or equivalent measure) to secure the BNT board down to a nearby flat surface.
7. Remove the top metal cover from the back half of the radio. Run the RGB cable (leave slack) on the top, left side of the radio like shown. Use a small zip tie to secure the cable from being pulled.



8. Replace the top metal cover to the back half of the radio. The RGB cable should fit through an unused access hole like shown.



9. Connect the free end of the RGB cable to the included blue NAV-TV RGB module at the port labeled 'RGB OUT'.
  
- 10.** The RGB will need to receive power to pass video. The included barrel power plug must be connected to ground (black wire) and 12v ACC or Ignition (red wire). ***NAV-TV recommends using the optional S2P module (NTV-KIT334) in situations where a true accessory power is difficult to find. The S2P will generate a 1 AMP ACC 12 volt + output whenever the CAN is active in the vehicle.***
  
- 11.** ***Supplying 12v (+) to the RGB module's blue wire will switch the video from the factory video screen to camera image (requires camera input from the 'Video 2' port). Use a relay to isolate the RGB input 2 trigger wire from the vehicle's reverse wire. The connections are : 85 to ground, 86 to the factory reverse wire, 87 to vehicle 12 volt + constant and 30 to the RGB blue input 2 trigger wire. The 'Video 1' port on the RGB module is activated with the wired toggle switch.***