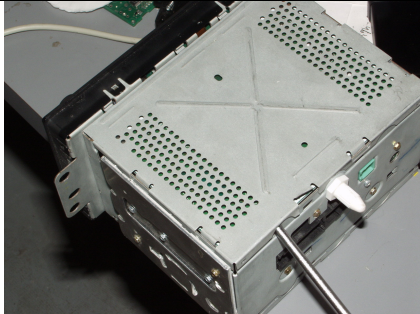
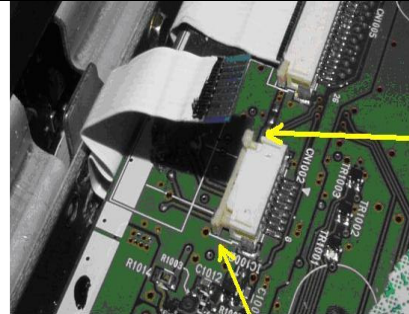


NAV-TV BACK-UP CAMERA INTERFACE MODEL GM104/GM204/GM105/GM205 FOR GM SUV NAVIGATION SYSTEMS

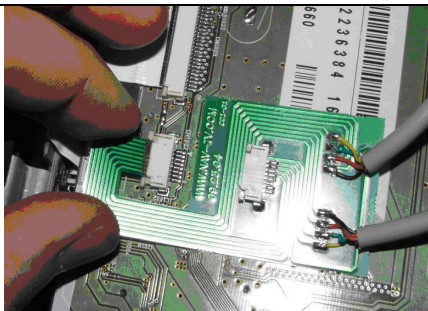
TECH SUPPORT: TOLL FREE (866) 477-3336 FAX. (561) 955-9770



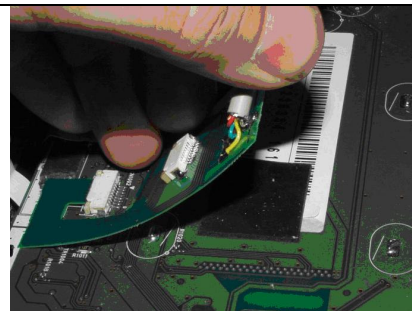
1. Remove lower cover



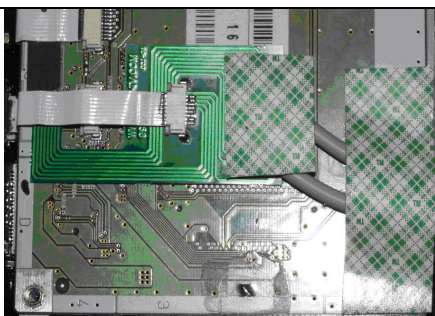
2. Locate the 8 or 14-pin connector (8 for non-touchscreen, 14 for touchscreen) and push both release tabs gently, then pull the ribbon cable out.



3. Insert adapter PCB into the 8 or 14-pin connector (8 for non-touchscreen, 14 for touchscreen). Push latch tabs back to the LOCKED position.



4. Lay a piece of double-sided tape directly under the adapter board, then press PCB against the tape.



5. Re-Insert ribbon cable into connector on green board, then lay double-sided tape as depicted above.



6. Route cable thru the small opening as depicted.