

NAV-TV

INTERFACING THE FUTURE

3950 NW 120th Ave, Coral Springs, FL 33065 TEL 561-955-9770 FAX 561-955-9760

www.nav-tv.com info@nav-tv.com

Genesis VIM CAM 13

NTV-KIT432



Overview

The Genesis VIM XG kit adds video in motion and rear camera to 2013 Hyundai Genesis Sedan vehicles.

Kit Contents



Genesis VIM 13 module
NTV-ASY166



USB Cable
NTV-CAB009



Plug and Play T-Harness
NTV-HAR239-A

Agreement: End user agrees to use this product in compliance with all State and Federal laws. NAV-TV Corp. would not be held liable for misuse of its product. If you do not agree, please discontinue use immediately and return product to place of purchase. This product is intended for off-road use and passenger entertainment only.

Module Programming

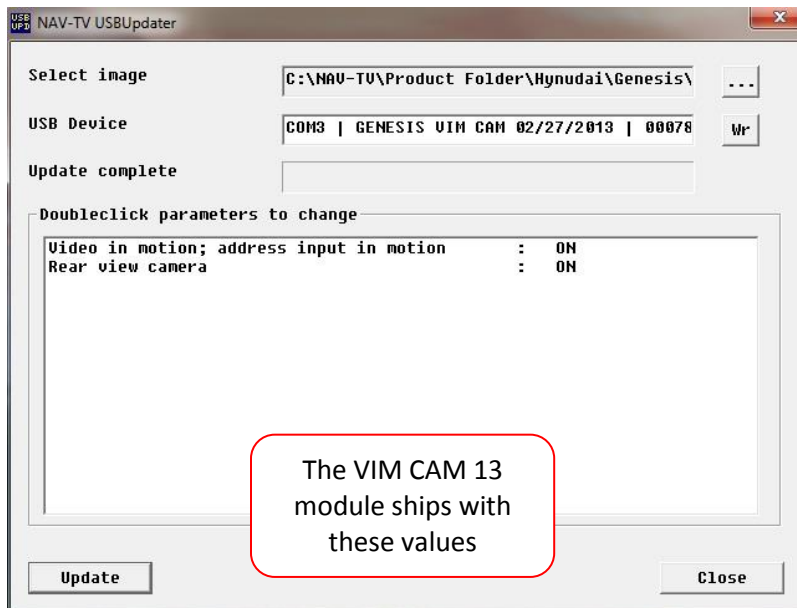
Before installation, the module may need to be programmed with desired features.

Video in motion/Address in motion:

When activated, the radio will display video or allow destination input while the vehicle is in drive or in motion.

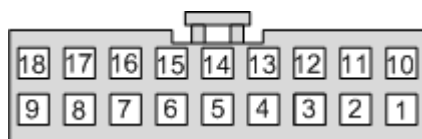
Rear view camera:

When enabled and a camera is installed: will automatically switch screen to reverse screen (when in reverse) and pull signal from the yellow RCA in the Plug and Play harness. (Needs to be enabled if car is equipped with factory camera)



Module pin outs

PIN #	Description	Color
1	Constant Power 12v (+)	Red
2	-Not Used-	White/Red
8	CAN HI (Radio side)	Yellow/Green
9	CAN HI (Car side)	Yellow/Green
10	Ground (-)	Black
17	CAN LO (Radio side)	Yellow
18	CAN LO (Car side)	Yellow



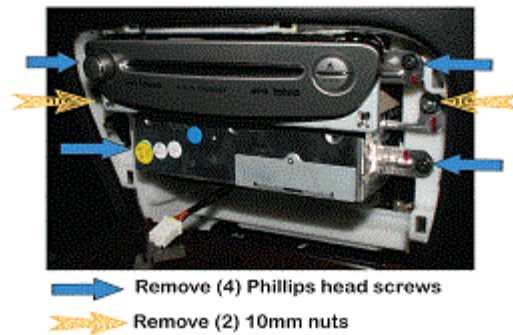
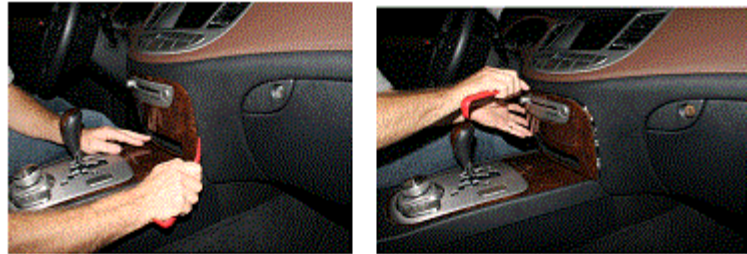
Wire side



Agreement: End user agrees to use this product in compliance with all State and Federal laws. NAV-TV Corp. would not be held liable for misuse of its product. If you do not agree, please discontinue use immediately and return product to place of purchase. This product is intended for off-road use and passenger entertainment only.

Installation

1. Using a plastic pry tool remove the bezel from around the DVD player to expose DVD/Radio tuner.
2. Lay down a cloth or a towel on center console as to not scratch the console when the radio is removed.
3. Remove (4) Phillips head screws from all (4) corners and (2) 10mm nuts from both sides.
4. While holding down the brake pedal, Shift vehicle into Drive to remove radio. Pull radio straight out.
5. Remove factory wire harnesses from behind radio.



6. Plug the factory harnesses into the female end of the supplied Plug and Play T-harness.
7. If installing a reverse camera, plug the signal into the yellow RCA in the supplied Plug and play T-harness. **Note:** the car must see the camera powered on **with ignition**. Do not connect power to a reverse light, connect to an accessory 12v (+) line.
8. Plug the male end of the supplied T-harness into the radio.
9. Plug the Genesis VIM13 module into the 18-pin connector located on the supplied T-harness.
10. Reinstall in reverse order, test for proper operation.

Note: The white/red wire on the 18-pin connector (labeled as 'Reverse Signal') is not used for this kit.

Operation

- Press the **Voice Command** button on the steering wheel for 3 seconds to enable/disable Video in Motion.



Hold for
3
seconds

NAV-TV

INTERFACING THE FUTURE

3950 NW 120th Ave, Coral Springs, FL 33065 TEL 561-955-9770 FAX 561-955-9760



Agreement: End user agrees to use this product in compliance with all State and Federal laws. NAV-TV Corp. would not be held liable for misuse of its product. If you do not agree, please discontinue use immediately and return product to place of purchase. This product is intended for off-road use and passenger entertainment only.