

# NAV-TV

INTERFACING THE FUTURE

3950 NW 120<sup>th</sup> Ave, Coral Springs, FL 33065 TEL 561-955-9770 FAX 561-955-9760

[www.nav-tv.com](http://www.nav-tv.com) [info@nav-tv.com](mailto:info@nav-tv.com)

## Genesis VIM XG

NTV-KIT278



### Overview

The Genesis VIM XG kit adds video in motion to '09-'12 Hyundai Genesis Sedan and Coupe vehicles.

### Kit Contents



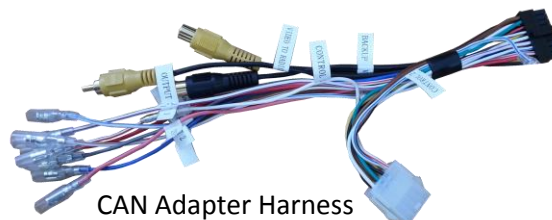
Plug & Play T-Harness  
NTV-HAR116



Genesis VIM module  
NTV-ASY171



USB Cable  
NTV-CAB009

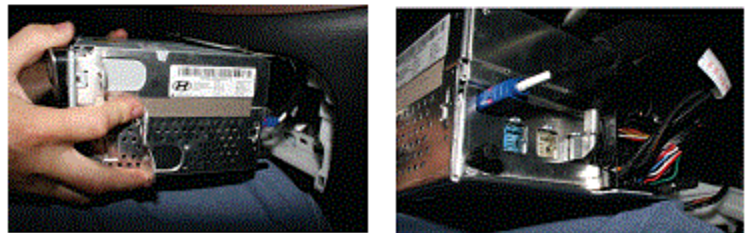


CAN Adapter Harness  
NTV-HAR058

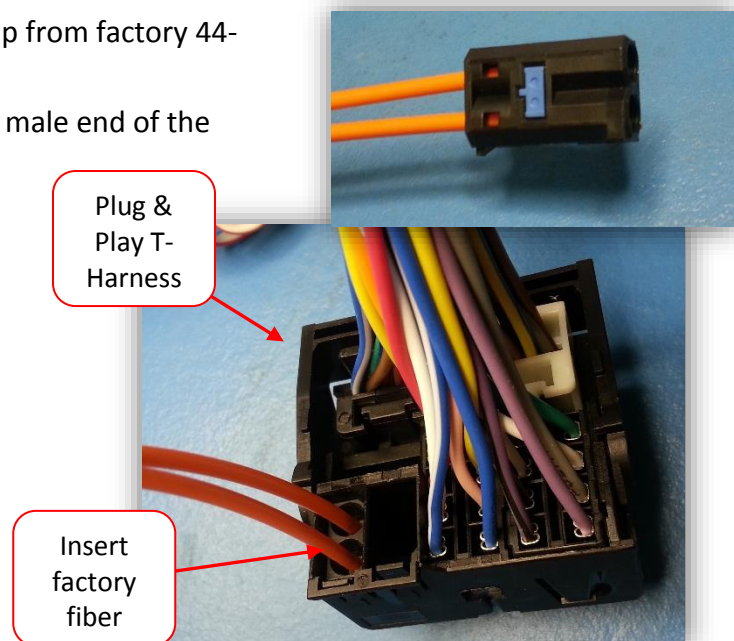
Agreement: End user agrees to use this product in compliance with all State and Federal laws. NAV-TV Corp. would not be held liable for misuse of its product. If you do not agree, please discontinue use immediately and return product to place of purchase. This product is intended for off-road use and passenger entertainment only.

## Installation

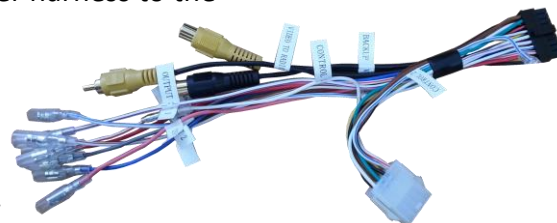
1. Using a plastic pry tool remove the bezel from around the DVD player to expose DVD/Radio tuner.
2. Lay down a cloth or a towel on center console as to not scratch the console when the radio is removed.
3. Remove (4) Phillips head screws from all (4) corners and (2) 10mm nuts from both sides.
4. While holding down the brake pedal, Shift vehicle into Drive to remove radio. Pull radio straight out.
5. Remove factory wire harness from behind radio.



6. Remove the factory fiber optic clip from factory 44-pin harness connector.
7. Insert the fiber optic clip into the male end of the provided T-harness.



8. Connect the white, 8-pin plug from the CAN adapter harness to the similar plug located in the Plug & Play T-Harness.
9. Connect the interface module to the 18-pin plug on the CAN adapter harness and mount behind radio/dash. **(all other wires are not used).**
10. Plug the factory 44-pin plug into the female end of the provided T-harness and connect the male end of the T-harness into the radio.
11. Reinstall the radio in reverse order.



## Operation

- Press the **Voice Command** button on the steering wheel for 3 seconds to enable/disable Video in Motion.

