

# NAV-TV

INTERFACING THE FUTURE

3950 NW 120<sup>th</sup> Ave, Coral Springs, FL 33065 TEL 561-955-9770 FAX 561-955-9760

## MOST-HUR

Porsche Head Unit Replacement Interface

**NTV-KIT155/210**



# MOST<sup>®</sup>

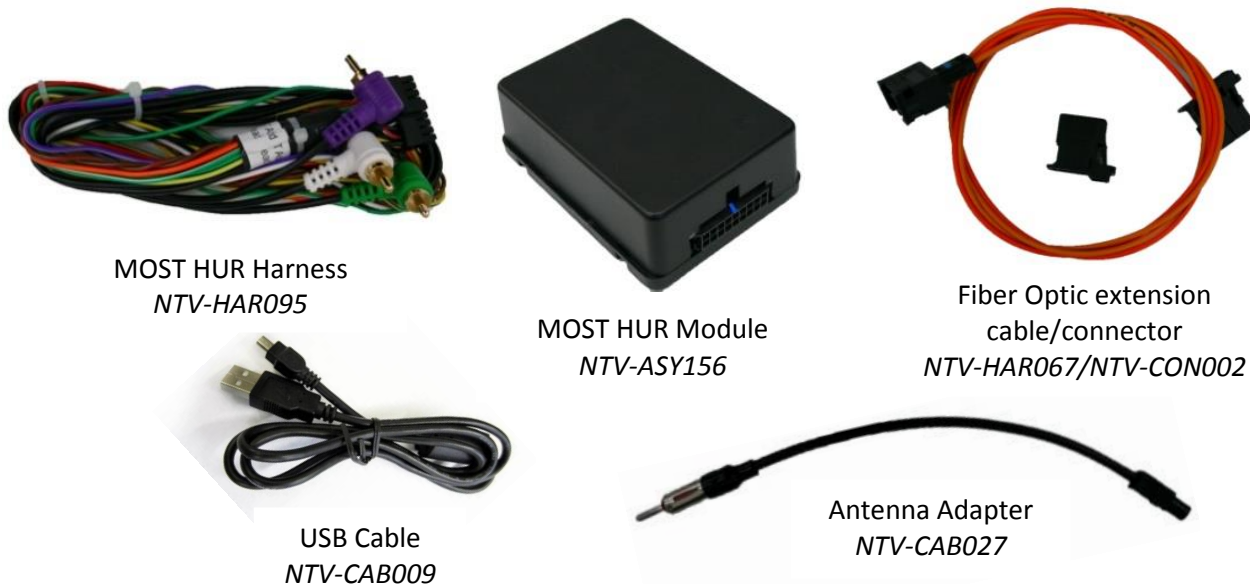


JR,BM  
04/11/14  
NTV-DOC137  
rB4

## Overview

The MOST-HUR (Head Unit Replacement) allows the user to install a feature-rich aftermarket radio while retaining the factory amplifier and converting audio signal to the factory fiber optic system. This is the fastest and easiest way to upgrade sound quality and features without performing “major surgery” to the vehicle. The HUR module also provides Vehicle Speed Sense (VSS out), 12v Reverse (out), hand/foot brake (out) and Illumination (out) for convenience.

## Kit Contents



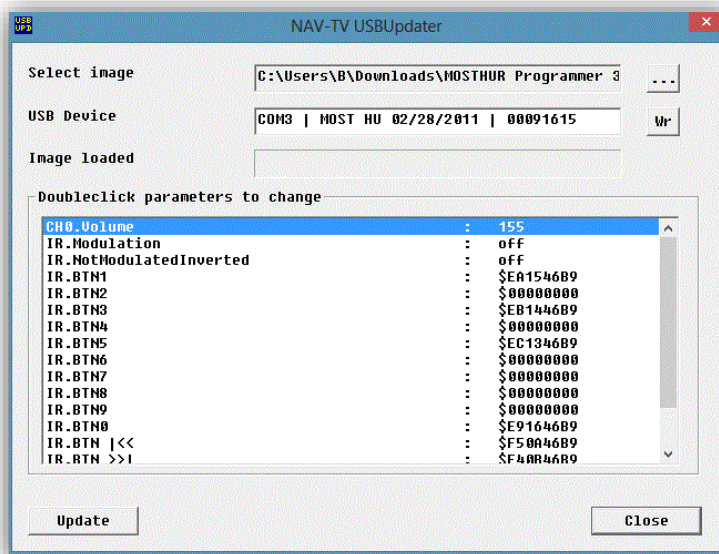
## Module Programming

To download radio specific files go to <http://www.navtv.com/page/19/downloads.html>. These files are designed to make installation easier. If you do not see your radio listed, you can use a generic file to interface with the M.O.S.T. amplifier, you just will not retain steering wheel control.

**\*Note:** Only Alpine or Kenwood are officially supported for retaining steering wheel controls.

**\*Note 2:** When adjusting volume is needed (factory amplifier gain control), change in increments of 5.

**\*Note 3:** Fade control is not available due to factory system limitations.



## Module Pin outs



Wire side

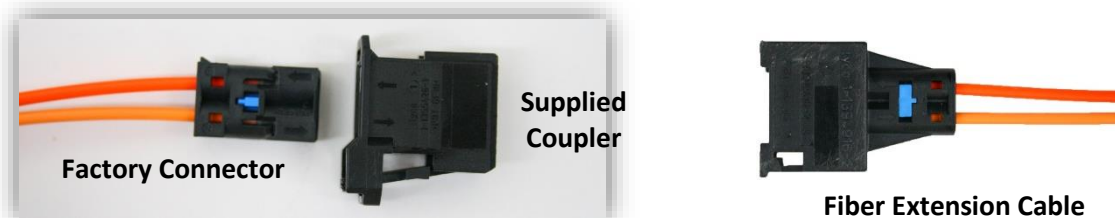
Pin #	Description	Color	Connects to:
1	<b>12v Ignition/ACC</b>	Yellow	Vehicle Ignition
2	Left Front Audio IN	White RCA	Radio, Left Front RCA OUT
3	Rear Common Shield	Green/Purple RCA	Radio, Rear RCA Common
4	Left Rear Audio IN	Green RCA	Radio, Left Rear OUT
5	Remote IN	Yellow/Black	Radio, Remote OUT
6	Foot Brake OUT	Yellow/Blue	Radio, Foot Brake IN
7	Reverse Signal OUT	Purple/White	Radio, Reverse IN
8	Illumination OUT	Orange	Radio, Illumination Control
9	CAN HI	Brown/Red	Vehicle, Brown/Red (CAN)
10	Ground	Black	Vehicle, Brown (Ground)
11	Right Front Audio IN	Gray RCA	Radio, Right Front RCA
12	Front Common Shield	White/Gray RCA	Radio, Front RCA Common
13	Right Rear Audio IN	Purple RCA	Radio, Right Rear OUT
14	<b>*IR OUT (see diagram)</b>	White	Radio, IR Control
15	Parking Brake OUT	Green	Radio, Parking Brake IN
16	VSS OUT	Green/White	Radio, VSS IN
17	12 ACC OUT (1 amp)	Red	Radio 12v Switched
18	CAN LO	Brown	Vehicle, Brown (CAN)

## Installation

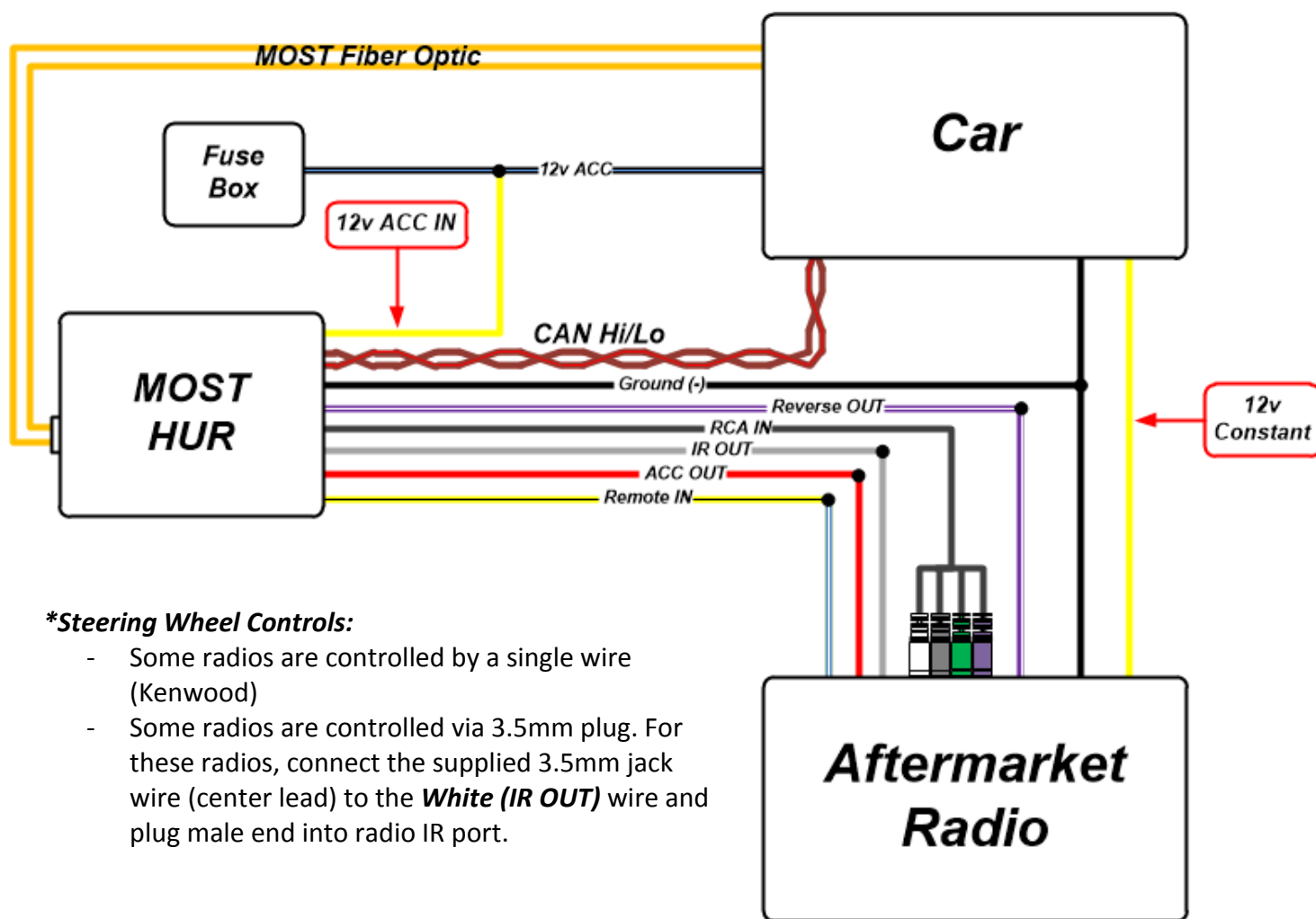
- Base-line the factory radio:**
  - Adjust the volume to a **comfortable listening** setting
  - Be certain the **MUTE** function is not enabled
  - Center the balance and fade, center the bass and treble
  - Be certain there are no other problems with the factory stereo system before installing this unit.
- Remove the factory radio from the dash.
- Remove the fiber-optic cable from the factory connector, insert into the supplied fiber connector (if necessary) and plug into the supplied fiber-optic extension cable (Optional. If you have enough slack from the factory MOST fiber connector, skip using the extension).
- Connect the male end of the fiber-optic extension cable to the MOST HUR module.

Agreement: End user agrees to use this product in compliance with all State and Federal laws. NAV-TV Corp. would not be held liable for misuse of its product. If you do not agree, please discontinue use immediately and return product to place of purchase. This product is intended for off-road use and passenger entertainment only.

5. Connect interface harness to proper wires using the wire chart provided on pages 3 & 5. **Note: not all connections are necessary for every install, some wires may be optional. Note 2: Reverse not supported on HUR-997 (sports car) KIT210.**
6. **Note:** the aftermarket radio's **constant power, ground, and power antenna** need to be connected to vehicles radio harness, the interface does not provide these connections.
7. **SOLDER ALL CONNECTIONS!**



Basic MOST-HUR connection diagram

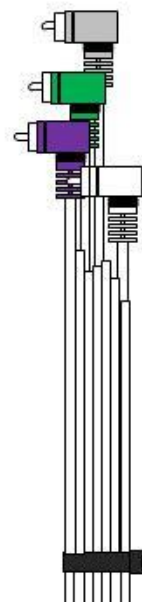
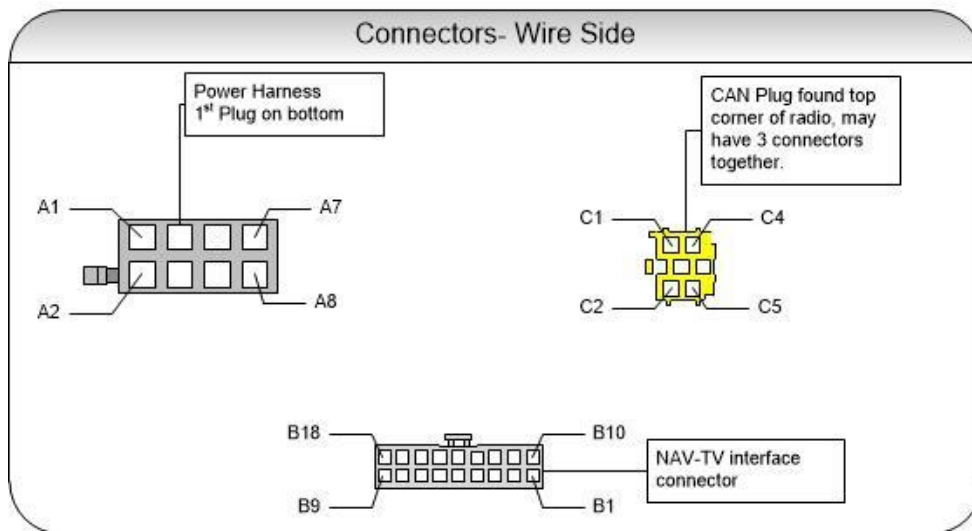


**\*Steering Wheel Controls:**

- Some radios are controlled by a single wire (Kenwood)
- Some radios are controlled via 3.5mm plug. For these radios, connect the supplied 3.5mm jack wire (center lead) to the **White (IR OUT)** wire and plug male end into radio IR port.

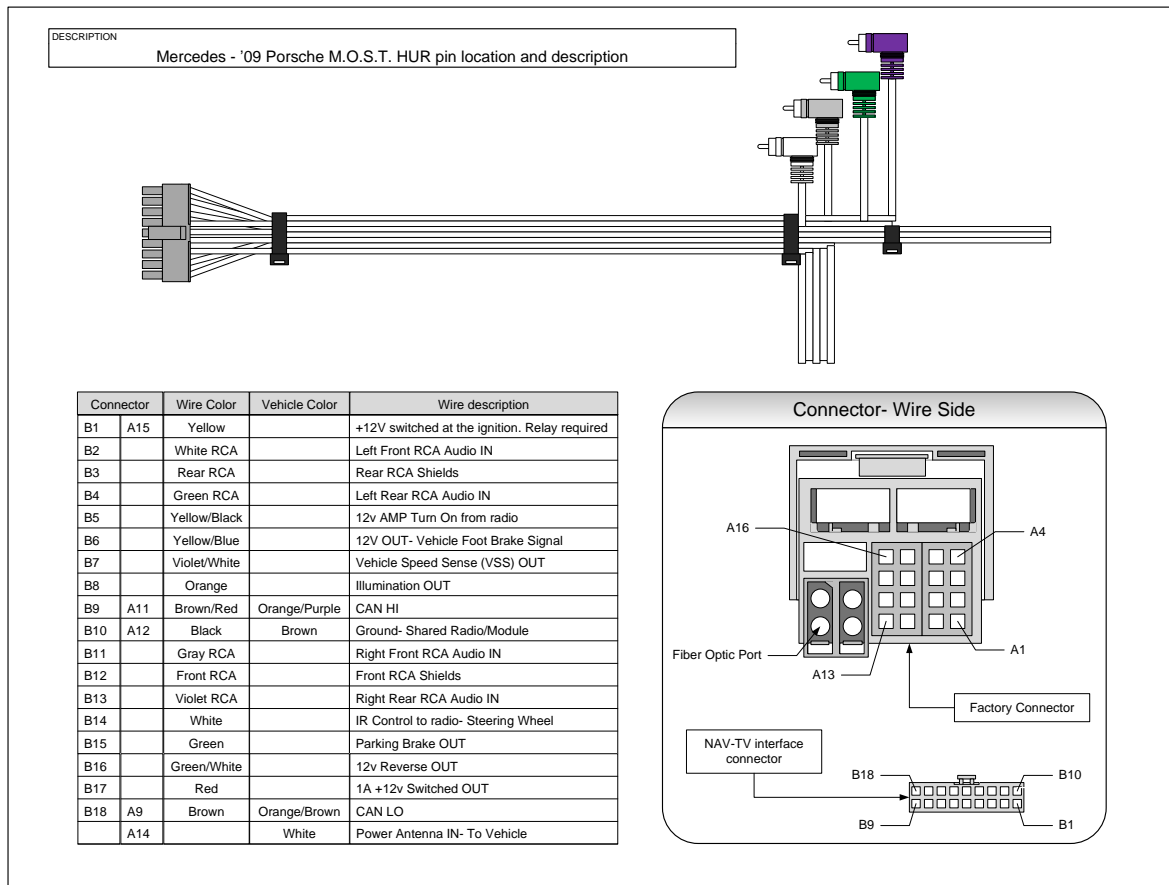
DESCRIPTION

'04-'08 Porsche M.O.S.T. HUR pin location and description



Connector		Description	HUR wire color	Vehicle wire color
B1	A4	<b>12v ACC/ignition</b>	Yellow	Not Available, connect at fuse box
B9	C1	CAN HI	Brown/Red	Orange/Purple or Yellow/Blue
B10	A8	Ground (-)	Black	Brown
B18	C8	CAN LO	Brown	Orange/Brown or Black/Blue

Agreement: End user agrees to use this product in compliance with all State and Federal laws. NAV-TV Corp. would not be held liable for misuse of its product. If you do not agree, please discontinue use immediately and return product to place of purchase. This product is intended for off-road use and passenger entertainment only.



# NAV-TV

INTERFACING THE FUTURE



Agreement: End user agrees to use this product in compliance with all State and Federal laws. NAV-TV Corp. would not be held liable for misuse of its product. If you do not agree, please discontinue use immediately and return product to place of purchase. This product is intended for off-road use and passenger entertainment only.