

NAV-TV

INTERFACING THE FUTURE

3950 NW 120th Ave, Coral Springs, FL 33065 TEL 561-955-9770 FAX 561-955-9760

GHIB-VIM

Maserati Ghibli Video in Motion

NTV-KIT499

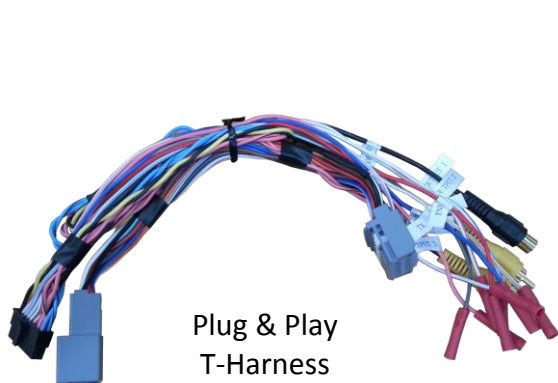


BHM
06/03/14
NTV-DOC183

Overview

GHIB-VIM allows video to be displayed and navigation destination input on the 2014 Maserati Ghibli while the vehicle is in motion.

Kit Contents



Plug & Play
T-Harness
NTV-HAR050



Volt VIM Module
NTV-ASY166



USB Cable (updates)
NTV-CAB009

GHIB-VIM pin out

| Pin # | Description | Color |
|-------|------------------------------------|--------------|
| 1 | 12v Constant Power (+) | Yellow |
| 2 | Input 1 (Send 12v for VIM Disable) | Red |
| 8 | CAN HI (Radio side) | Pink/Black |
| 9 | CAN HI (Car side) | Blue |
| 10 | Ground (-) | Black |
| 11 | Output 1 (ACC out @ 1 amp) | White/Red |
| 12 | Output 2 (Reverse out @ 1 amp) | White/Blue |
| 13 | Output 3 | White/Purple |
| 17 | CAN LO (Radio side) | Pink |
| 18 | CAN LO (Car side) | Blue/Black |



Wire side

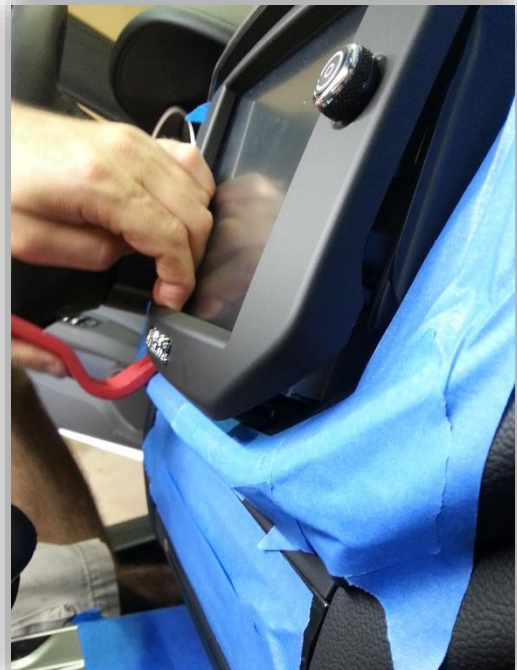
Agreement: End user agrees to use this product in compliance with all State and Federal laws. NAV-TV Corp. would not be held liable for misuse of its product. If you do not agree, please discontinue use immediately and return product to place of purchase. This product is intended for off-road use and passenger entertainment only.

Ghibli Dash Disassembly

1. Begin by removing the lower side panels beneath the radio (1 panel per side of the center console). An Allen bolt will need to be removed on each side.



2. Tape off the vents and all silver metal trim around the media screen, and pry the screen bezel off carefully* (this will require serious force, as these clips are very strong! Proceed slowly with extreme caution).



****Note: be careful not to break the ribbon connectors attached to the knobs on the bezel!***

3. Disconnect the ribbon cables from the screen bezel, set the bezel aside. Remove (4x) Phillips head screws securing the vents assembly.



4. Remove the vent assembly. Carefully disconnect the plug on the passenger side.



5. With a small pick/flathead, pop off the Allen screw cover on the shift knob. Remove the Allen screw and pull the shift knob straight upwards.



6. Remove the lower screws securing the radio to the dash (one on either side of the console, hidden by the previously removed panel).



7. Remove the (2x) upper Phillips head screws securing the radio into the sub-dash. Once these are removed the radio should now be free to pull straight out (towards you).



Agreement: End user agrees to use this product in compliance with all State and Federal laws. NAV-TV Corp. would not be held liable for misuse of its product. If you do not agree, please discontinue use immediately and return product to place of purchase. This product is intended for off-road use and passenger entertainment only.

GHIB-VIM Installation

1. With the radio removed, connect the male end of the **car's main radio harness** to the female end of the supplied **Plug & Play T-Harness**.
2. Plug the GHIB-VIM module into the 18-pin connector attached to the plug and play harness.
3. Plug the male end of the supplied plug and play harness to the radio.
4. Reconnect the remaining plugs to the radio, remount and test for proper operation.



Note: no other wires on the Plug & Play Harness are used for this installation.

GHIB-VIM Operation

Video in motion is always enabled, no user interaction is required.

Video in Motion will allow:

- DVD video to be displayed while the vehicle is in motion
- Navigation input while the vehicle is in motion
- Bluetooth setup while the vehicle is in motion

NAV-TV
INTERFACING THE FUTURE



Agreement: End user agrees to use this product in compliance with all State and Federal laws. NAV-TV Corp. would not be held liable for misuse of its product. If you do not agree, please discontinue use immediately and return product to place of purchase. This product is intended for off-road use and passenger entertainment only.