

# NAV-TV

INTERFACING THE FUTURE

3950 NW 120<sup>th</sup> Ave, Coral Springs, FL 33065 TEL 561-955-9770 FAX 561-955-9760

[www.nav-tv.com](http://www.nav-tv.com) [info@nav-tv.com](mailto:info@nav-tv.com)

## Volvo VIM

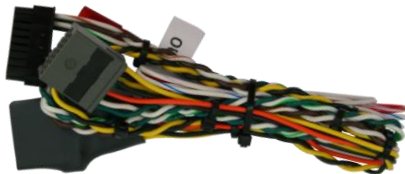
NTV-KIT298



### Overview

The Volvo VIM kit enables video in motion (VIM) and navigation control in motion (CIM) in select Volvo vehicles. This installation requires no cutting of any factory wires and is fully Plug & Play behind the media screen.

### Kit Contents



Plug & Play T-Harness  
NTV-HAR204 & NTV-HAR207



Volvo Cam module  
NTV-ASY160

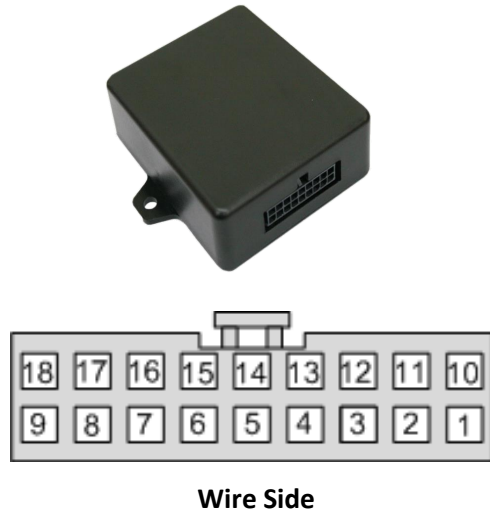


USB Cable (updates)  
NTV-CAB009

Agreement: End user agrees to use this product in compliance with all State and Federal laws. NAV-TV Corp. would not be held liable for misuse of its product. If you do not agree, please discontinue use immediately and return product to place of purchase. This product is intended for off-road use and passenger entertainment only.

**Volvo VIM Module Pin Outs**

Pin #	Description	Color
1	12v Constant (+)	Yellow
5	-not used-	Gray
6	-not used-	Blue
8	CAN HI (Radio Side)	Green
9	CAN HI (Vehicle Side)	White
10	Ground (-)	Black
11	Output 1 (12v w/ CAN)	White/Red
12	Output 2 (12v w/ REV)	White/Blue
13	Output 3	White/Purple
14	-not used-	Gray/White
15	-not used-	Pink/Black
16	-not used-	Pink
17	CAN LO (Radio Side)	White/Green
18	CAN LO (Vehicle Side)	Brown

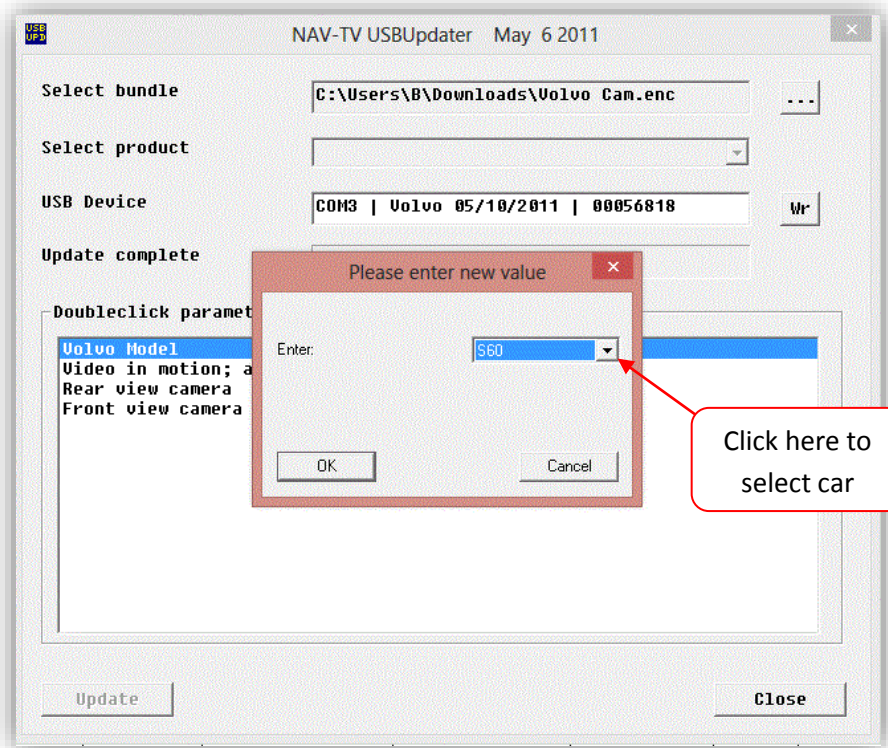
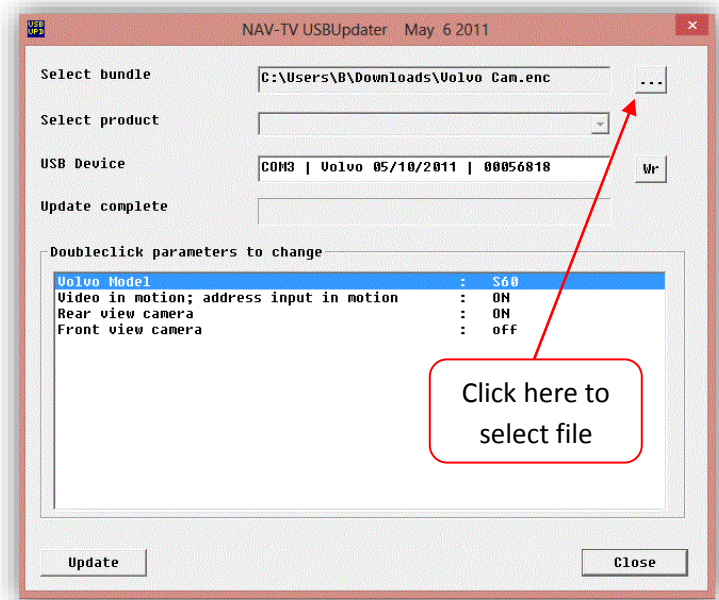


**Module Programming**

1. The Volvo Cam module will come preprogrammed with the most popular working file, but you may need to adjust it for your particular Volvo type/year.
2. Refer to <http://www.navtv.com/page/19/downloads.html> and download the 'Volvo Cam' Updater (towards the bottom of the page, 10/30/2013 date stamp)
3. After downloading, unzip the compressed folder into another folder (make a new folder, name it 'Volvo')
4. If you've never updated a Nav-TV module before, you'll need to install one USB driver also found on the Nav-TV downloads page (at the very top, first downloadable link).
5. Open the Volvo Updater found in the extracted folder from step 3.
6. Connect the Volvo Cam module to the computer using the provided USB to mini-USB cable.
7. The 'USB Device' field should populate after 5-10 seconds.
8. Click the 3 dots at the top right of the updater window. Navigate to the same extracted folder from step 3. Select the 'Volvo Cam.enc' file and press 'Open'.
9. Double click 'ON' for VIM or address in motion to adjust ON or OFF.
10. Double click 'ON' for Rear view camera to adjust ON or OFF.
11. Double click 'off' for Front view camera to adjust ON or OFF.

Agreement: End user agrees to use this product in compliance with all State and Federal laws. NAV-TV Corp. would not be held liable for misuse of its product. If you do not agree, please discontinue use immediately and return product to place of purchase. This product is intended for off-road use and passenger entertainment only.

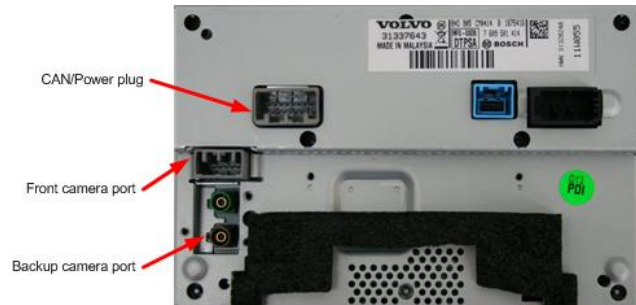
12. Double click 'S60' and a new window will appear. Select from the drop down according to which Volvo type you're installing the kit into and then press 'OK'.
13. Press the 'Update' button and wait for the loader to finish updating.
14. Disconnect the module from the computer, reconnect to the T-Harness in the car and retest for proper operation.



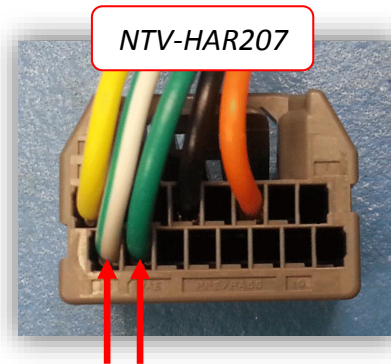
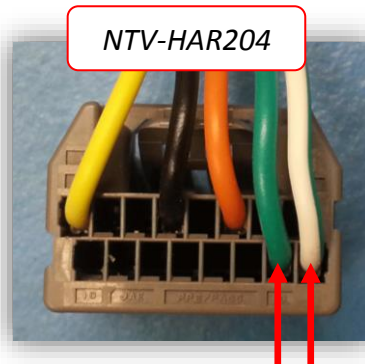
## Installation

1. Access the main LCD screen by removing the panels surrounding it. This usually involves pulling the panels and removing Torx screws.
2. Remove the Volvo LCD by removing the (4x) Torx T25 screws that secure it into the dashboard and disconnect all plugs connected to the screen. Set the Screen aside for now.

**Back of Volvo Screen**



3. **The Volvo VIM kit includes (2x) T-Harnesses. You must determine which is needed for your vehicle by examining the CAN wires on the male side of the provided Power T-Harness:**

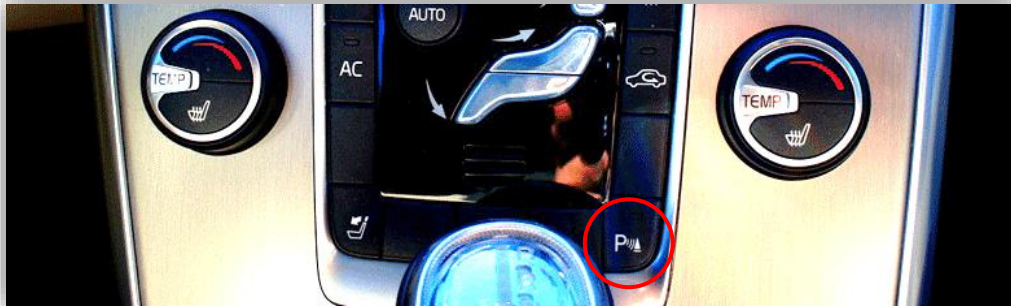


**Compare the CAN wires on this plug with the factory Volvo screen's plug: make certain the wire locations match (are in the same position).**

4. Plug the factory power/CAN harness into the female side of the supplied T-Harness.
5. Plug the Volvo Cam module into the 18-pin connector located on the supplied T-Harness. The LED on this module will light up solid whenever CAN is active in the car.
6. Connect the male end of the supplied Plug and Play harness into the Volvo screen. Reconnect the remaining plugs to the screen and test for proper operation before reassembling dash.

## Video in Motion (VIM) Operation

VIM and navigation\* entry in motion is enabled when the unit is shipped. No user activation is required for most vehicles, but if the module does not function, press the **Parking Sensor** button. This will enable VIM and allow the user to watch DVD movies or control the navigation when the vehicle is in motion.



---

# NAV-TV

INTERFACING THE FUTURE

3950 NW 120<sup>th</sup> Ave, Coral Springs, FL 33065 TEL 561-955-9770 FAX 561-955-9760



---

Agreement: End user agrees to use this product in compliance with all State and Federal laws. NAV-TV Corp. would not be held liable for misuse of its product. If you do not agree, please discontinue use immediately and return product to place of purchase. This product is intended for off-road use and passenger entertainment only.