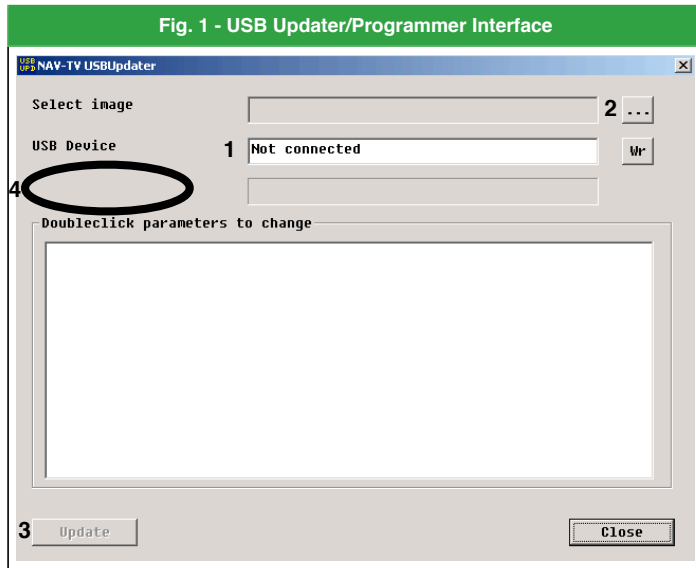


W221CAM-USB Updater/Programmer

This software is designed to easily update any Nav-TV product that features a USB port on-board.

USB



IMPORTANT NOTE! Do not plug the Nav-TV module into the USB port of the PC until the software has been properly installed!!!

The USB updater allows for easy updating of the software in any Nav-TV module that is equipped with a USB port.

Please check the Downloads section of www.Nav-TV.com for the latest software versions for your product.

We recommend creating a "Nav-TV" folder on either your desktop or My Documents and download the file into that folder. Once the Updater has been downloaded and unzipped, run the **DriverInstaller.exe** file to configure the USB drivers, rebooting the computer if necessary at the end.

Note: The **DriverInstaller** only needs to be run once on any computer. After it is installed, the same USB Updater can be used for any Nav-TV USB module.

To update your Nav-TV module, it is not necessary to remove it from the vehicle, but the module should be completely off during the update. To verify that the module is off, shut off the ignition and remove the key from the ignition cylinder, then wait approximately 1-2 minutes. To prevent the system from waking up, do not lock, unlock or open the doors.

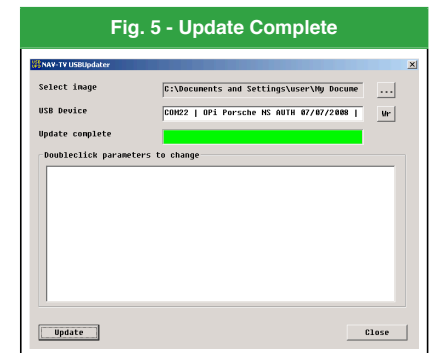
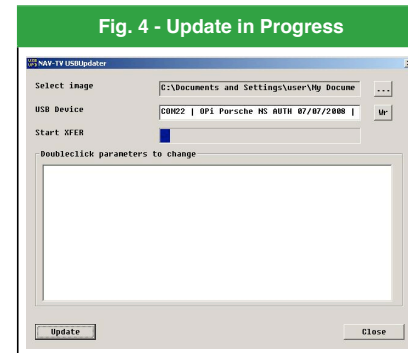
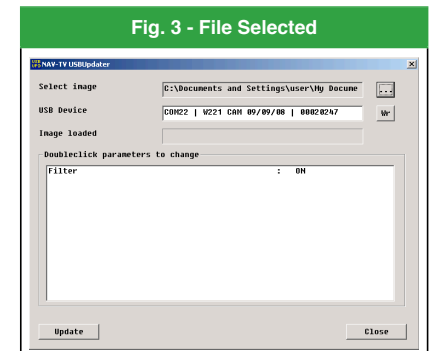
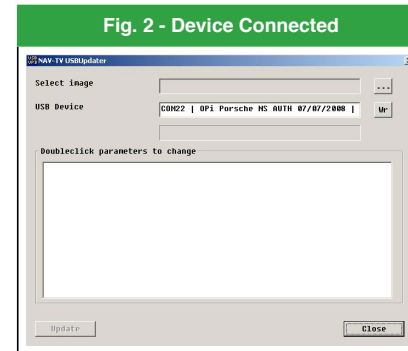
Agreement: End user agrees to use this product in compliance with all State and Federal laws. NAV-TV Corp. would not be held liable for misuse of its product.
If you do not agree, please discontinue use immediately and return product to place of purchase.
This product is intended for off-road use and passenger entertainment only.

W221CAM-USB Updater/Programmer

This software is designed to easily update any Nav-TV product that features a USB port on-board.

Once the module and vehicle are completely off:

- 1) Start the updater on the computer.
- 2) Plug the cable from the module into an available USB port on the computer.
- 3) Verify that the line labeled "USB Device" (Figs. 1-1 & 2) changes from *Not connected* to *COMxx I (Module name) (Version date) I (Serial #)*; this may take up to 15 seconds.
- 4) Click on the 3 dots (Figs. 1-2 & 3) and select the proper software version for the product that you wish to load from the directory that you created to download and extract the Updater. The file should start with the name of the product to be updated and be followed by the software date, and end with ".enc". The most current version of the software will also have the word "Final" at the end of the filename.
- 5) Select the desired option setting(s) for the initial configuration of your vehicle according to Figure 6.
- 6) Click on Update (Figs. 1-3, 4) and wait for the Update complete (Figs. 1-4 & 5) message.

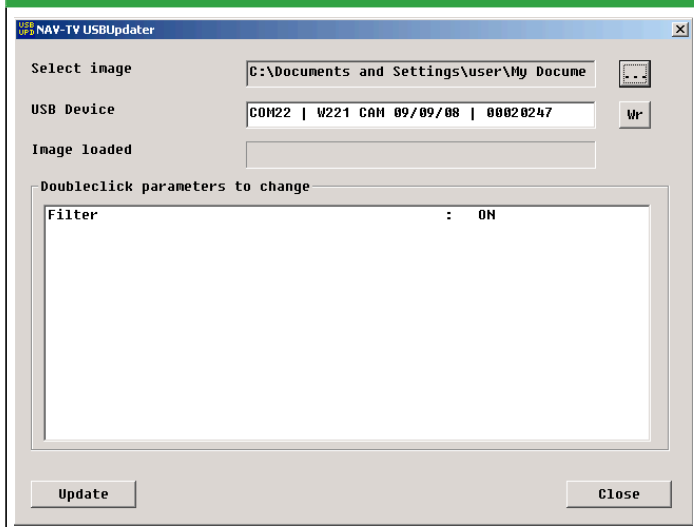


Agreement: End user agrees to use this product in compliance with all State and Federal laws. NAV-TV Corp. would not be held liable for misuse of its product.
If you do not agree, please discontinue use immediately and return product to place of purchase.
This product is intended for off-road use and passenger entertainment only.

W221CAM-USB Updater/Programmer

This software is designed to easily update any Nav-TV product that features a USB port on-board.

Fig. 6 - USB Updater/W221CAM Interface
(Double click on a line to change the setting.)



The USB interface allows for the selection of various options or modes for the W221CAM. Those options currently include:

Filter On/Off selection. IT IS VERY IMPORTANT THAT THIS BE SET CORRECTLY FOR THE INITIAL CONFIGURATION OF YOUR VEHICLE!!!

If the vehicle is equipped with a factory-installed backup camera, select "On"; otherwise this must be set to "Off".