

NAV-TV

INTERFACING THE FUTURE

3950 NW 120th Ave, Coral Springs, FL 33065 TEL 561-955-9770 FAX 561-955-9760

NNG-GM1

Navigation interface for GM vehicles equipped with GVIF MyLINK

NTV-KIT550



NTV-DOC215

Navigation System for GM MyLink with 7" LCD Screen

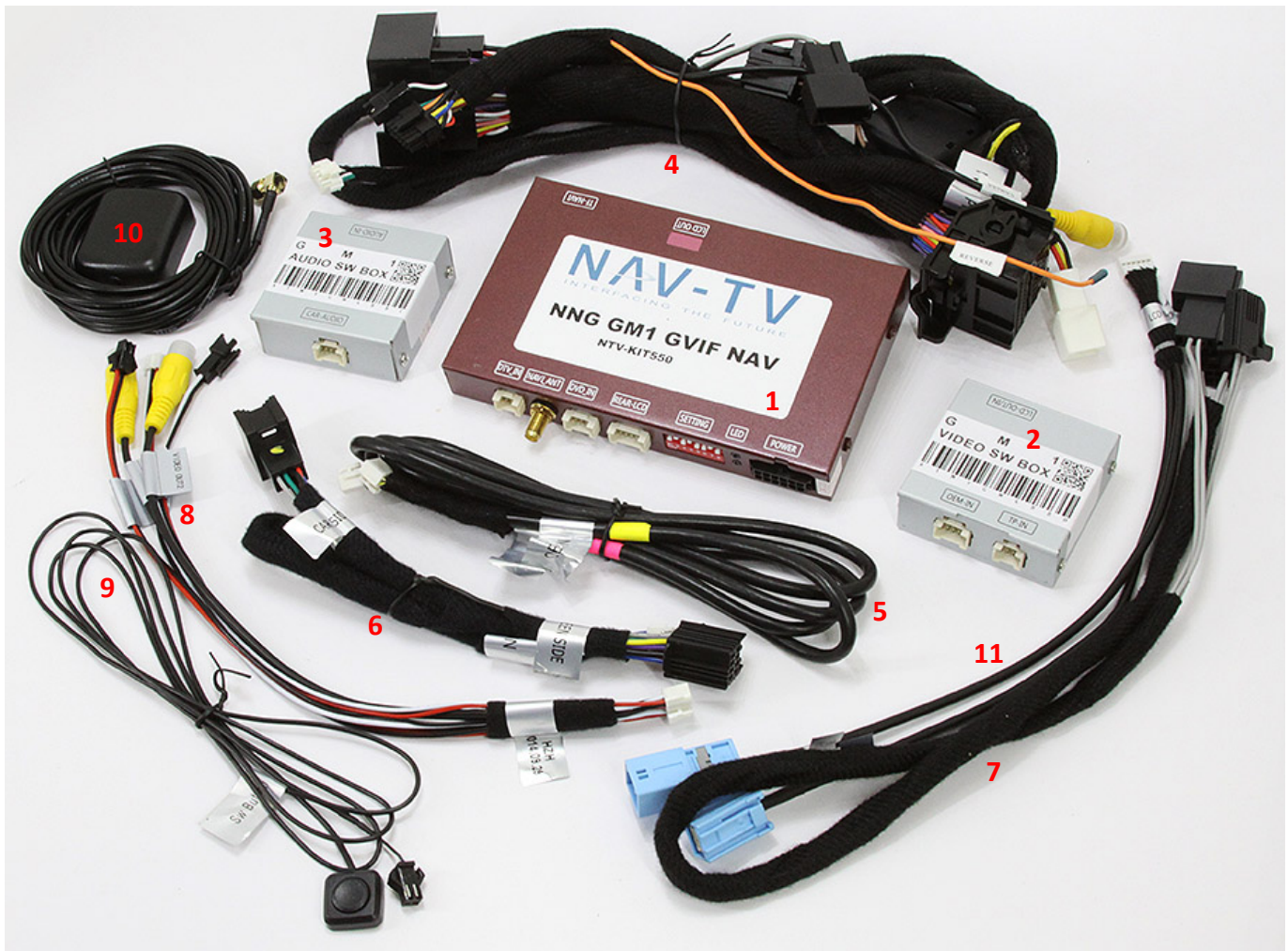
GM Soft Touch Navigation System

Parts Identification	Page 1
Assembly Layout	Page 2
Dashboard Disassembly	Page 3
Interface Module Details	Page 4
Interface Module Connections	Page 5
Reassembly	Page 6



CAUTION: It is strongly recommended to disconnect the negative battery cable for 3 minutes before beginning installation of this product to avoid unintended air bag deployment. Note and record any anti-theft radio codes prior to disconnecting.

- | | |
|---|---------------------------------|
| 1. GM1 GPS Interface | 7. Audio IN/OUT Cable |
| 2. GM1 Video Switch Module | 8. Rear-LCD Harness |
| 3. GM1 Audio Switch Module | 9. OEM/NAV Toggle Switch |
| 4. GM1 Plug & Play T-Harness | 10. GPS Antenna |
| 5. LCD/TP Harnesses | 11. GVIF Y-Adapter |
| 6. Video T-Harness | |



Before you Start

The following assembly is used in:

- 2011-2013 GMC Terrain
- 2011-2013 Chevrolet Equinox
- May 2012+ Chevrolet Volt (equipped with 7" LCD screen and MyLink)
- 2012-2013 Buick LaCrosse, Regal, and Verano



Universal kit includes assembly shown to the left. T-Harness is applicable to Chevrolet Equinox, Chevrolet Volt (May 2012 and later), GMC Terrain, Buick LaCrosse, Buick Regal, and Buick Verano **ONLY**.

For the Chevrolet Malibu and Camaro application, use their vehicle specific harnesses (sold separately). The vehicle specific harness will replace the universal harness provided in the assembly pictured above.

2013+ Chevrolet Camaro: NTV-KIT551

2013+ Chevrolet Malibu: NTV-KIT554

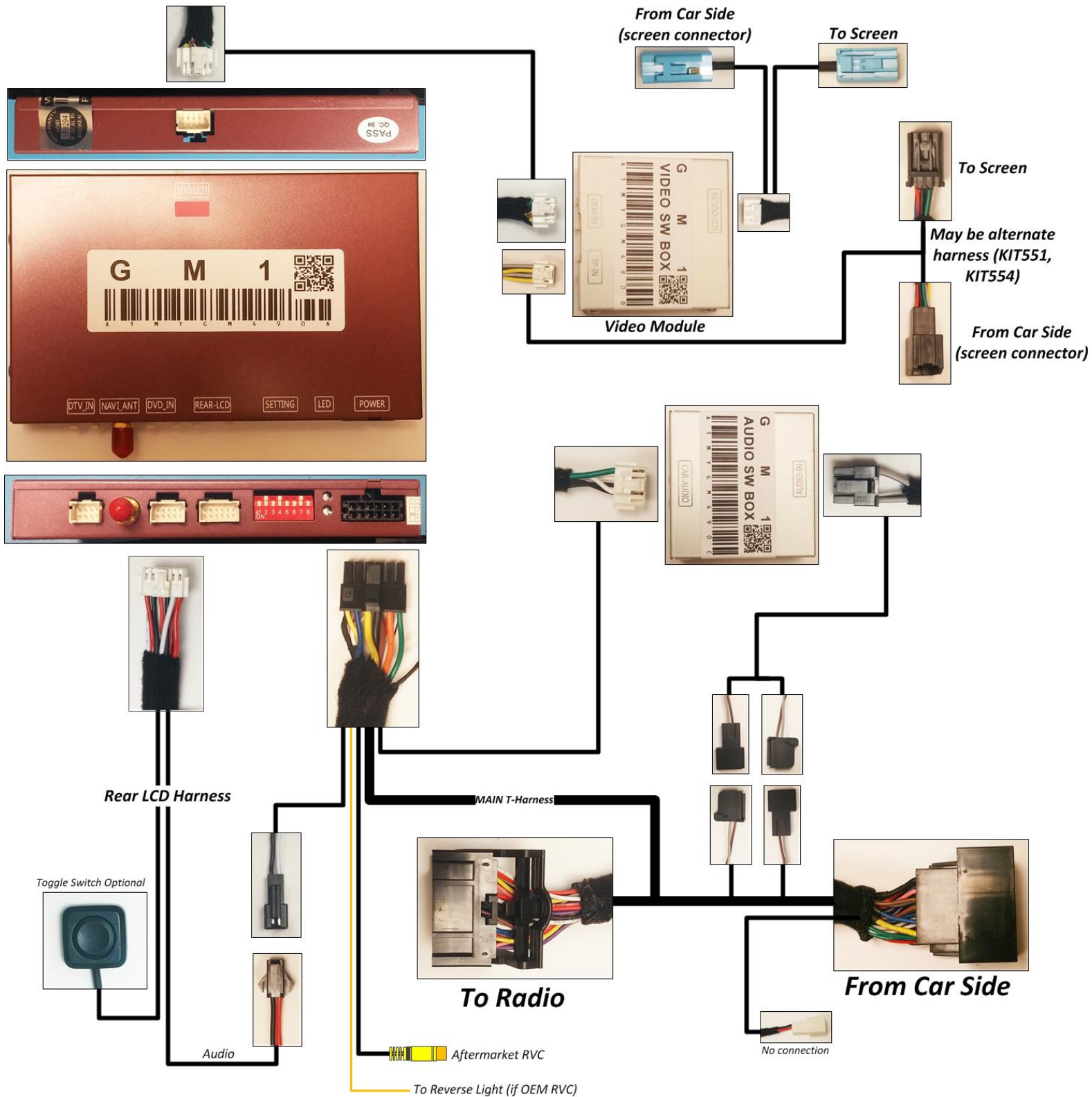


NTV-KIT551: T-Harness required for Camaro (NNG-GM1)
(sold separately)



NTV-KIT554: T-Harness required for Malibu (NNG-GM1)
(sold separately)

GM1 Installation Diagram

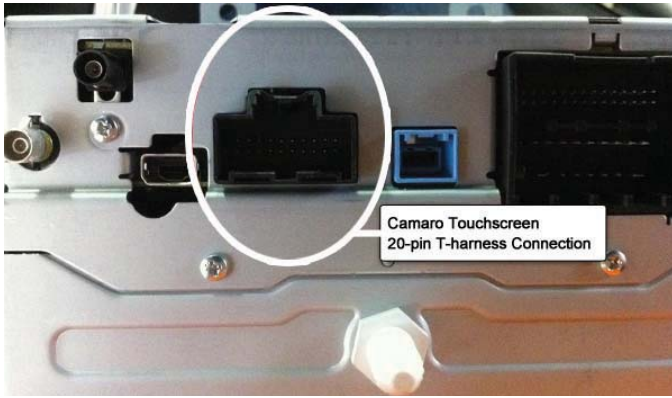


Dashboard Disassembly

Step 1		Step 2		Step 3		Step 4	
							
Remove screen visor		Remove trim panels		Remove screws surrounding storage area			
Step 5				Step 6			
							
Remove retaining screws from display				Remove radio from dashboard			
Step 7							
							
Disconnect the factory wiring harnesses from the rear of the radio and install the included interface T-harnesses between the radio and the factory wiring harnesses making sure all connections are properly seated and secure before proceeding.							

T-harness Installation (Chevrolet Camaro and Malibu)

Chevrolet Camaro T-harness Installation



Chevrolet Malibu T-harness Installation



NOTE: The GVIF harness for both of the vehicles listed above is to be connected to the back of the vehicle's LCD screen and **NOT** directly to the radio.

Programming Switch Settings for Reverse Camera Integration



Default Programming Switch Settings

1 – On 2 – Off 3 – On 4 – Off 5 – On 6 – On 7 – Off 8 – On

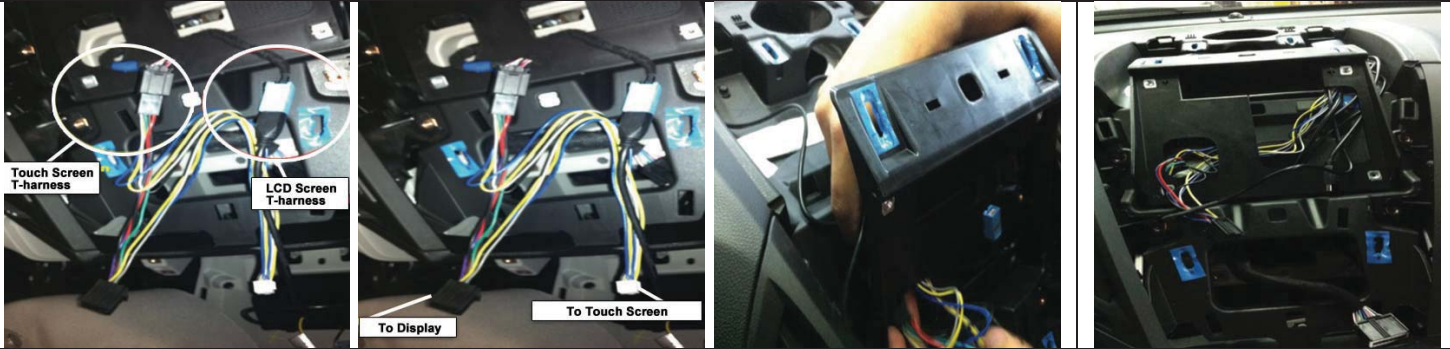
Factory or Aftermarket Camera Settings

Aftermarket Camera – Place switch #1 in **OFF** position.

Factory Camera – Place switch #1 in **ON** position.

Interface Module Connections

Step 9



Route included T-harnesses behind display housing

Step 10





Connect the **OEM-IN** and **LCD-OUT/IN** harness plugs to the video-switching module. Connect the GVIF plug to the back of the factory touch screen.

Step 11



Remove the passenger-side panel from the center console and place the navigation unit securely in front of the air conditioning system's ductwork connecting remaining harnesses.

Step 12	Step 13
	
<p>Route the GPS antenna extension harness from the GPS/Multimedia video interface module to the rear of the vehicle.</p>	<p>Place the GPS antenna at the top-rear of the vehicle allowing it to attach to the vehicle's body using its built-in magnet (optional location).</p>
<p>Reassembly</p> <ol style="list-style-type: none"> 1. Reinstall all trim pieces taking special care to ensure harnesses and wiring connections are properly secured. 2. Make sure no harnesses are bent or pinched by trim pieces. 3. Reconnect all disconnected bulbs and check for function. <p>Installation Tips</p> <ul style="list-style-type: none"> • Confirm proper cable extension connector orientation and always verify proper ends are routed in correct direction. • It is a good idea to dry-fit all pieces in this kit before permanently attaching them to ensure proper orientation and operation before beginning installation for familiarization with components. • Always treat any metal exposed during installation with a rust preventative compound to prevent system failure due to rust and/or corrosion. • Always seal any holes drilled with the provided sealing putty to prevent water infiltration through unprotected areas. • Confirm integrity of mechanical and electrical connections before moving to next installation sequence. 	
Step 14	Step 15
	
<p>Once all connections have been made, re-assemble the radio and dashboard.</p>	<p>If indoors, start the vehicle and move it outside so that the GPS antenna has a clear view of the sky. Press and hold the mute/call decline button to switch from the factory interface to the Navigation interface.</p>

If you see an error when switching to NAV mode that states:

'OUT OF MEMORY'

'REG 996886x0000' (or any other numbers)

Follow these steps to fix the issue:

1. Access the map micro SD (or standard size SD) card from the module and remove it
2. Use an SD card adapter for the PC to load the content
3. Access the map software from the PC from adapter
4. Look for the main folder "NAVI" from the SD card
5. Inside the "NAVI" folder, you should find a folder "SAVE"
6. ***Delete the "SAVE" folder from the SD card***
7. Check to ensure the "SAVE" folder is successfully deleted
8. Insert the cleaned SD card back to the module
9. Turn on the system and check all functions. You should see it start with initial setup options and all should be well.