

# NAV-TV

INTERFACING THE FUTURE

3950 NW 120<sup>th</sup> Ave, Coral Springs, FL 33065 TEL 561-955-9770 FAX 561-955-9760

## NNG-HONDA C

Navigation interface for select Honda vehicles

*NTV-KIT599*



NTV-DOC224

# ***NTV-KIT599 NNG-HONDA C Kit Content***

1. NNG-HONDA C Interace/GPS combo
2. Radio Modification PCB
3. Radio T-Harness for interface
4. Touch Panel Harness (PCB to interface)
5. LCD Harness (PCB to interface)
6. GPS Antenna
7. NAV Voice Speaker
8. NAV Activation momentary switch
9. Lane Departure warning module (optional)



## **Honda Civic / Fit 2014-2015 Installation**

### **Honda C navigation system application guide**

**2014 – 2015 Civic (with factory 7” touch radio)**

**2014 – 2015 Fit (with factory 7” touch radio)**

**\*\* Honda\_C navigation system only compatible to vehicles listed above. All compatible radio should be factory equipped 7” touch screen radio. \*\***

**WARRANTY DISCLAIMER NOTICE!** Radio removal, disassembly, installation of Navigation Electronics, and Radio re-assembly / re-installation is the responsibility of the installer. It is recommended that you contact a professional installer that is experienced with proper work methods involving electronics and knowledgeable of specific procedures for radio disassembly, Navigation Electronics installation, and re-assembly / re-installation of the Radio Head Unit in the vehicle. **INSTALLATION DAMAGE TO THE VEHICLE RADIO HEAD UNIT IS EXPRESSLY NOT COVERED UNDER THE PRODUCT WARRANTY.**

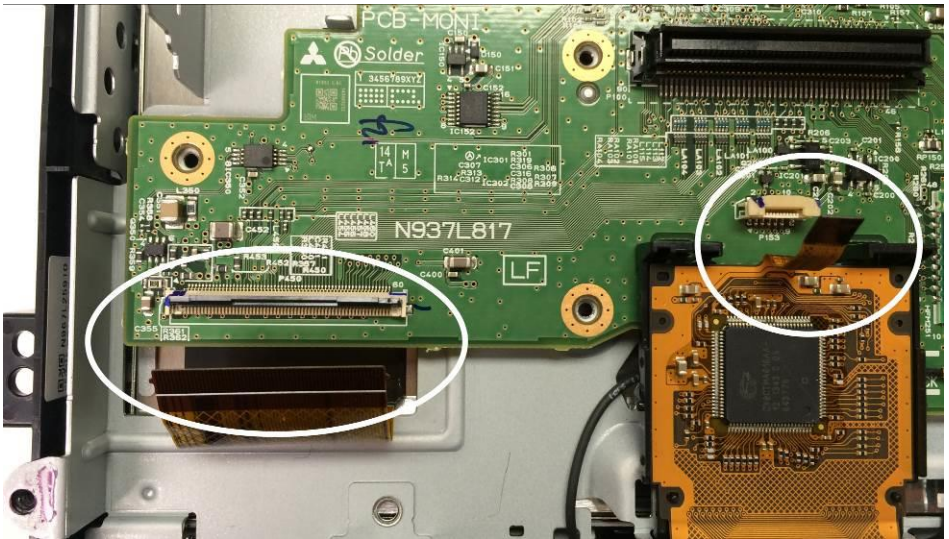
To avoid dangerous distractions that may lead to an accident, the driver should never operate the system while the vehicle is in motion. Before installing the product, the seller should inform the end-user of proper use and compliance with the proper instructions and all states and federal laws.

Before beginning your installation, familiarize yourself with the installation instructions and the Navigation system components.

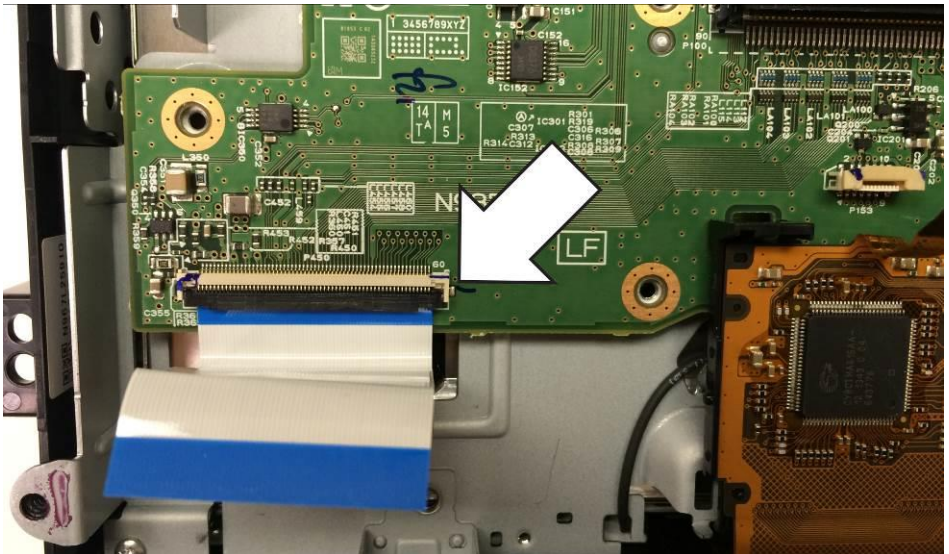
**CAUTION:** It is advisable to disconnect the negative battery cable for 3 minutes before beginning installation, to avoid unintended air bag deployment. Note and record any anti-theft radio codes prior to disconnecting.

**This is a general installation guide for navigation system. There will not be any instruction on dash / radio removal. Please refer to Honda factory service manual for removing radio from dash.**

## Honda Civic / Fit 2014-2015 Installation



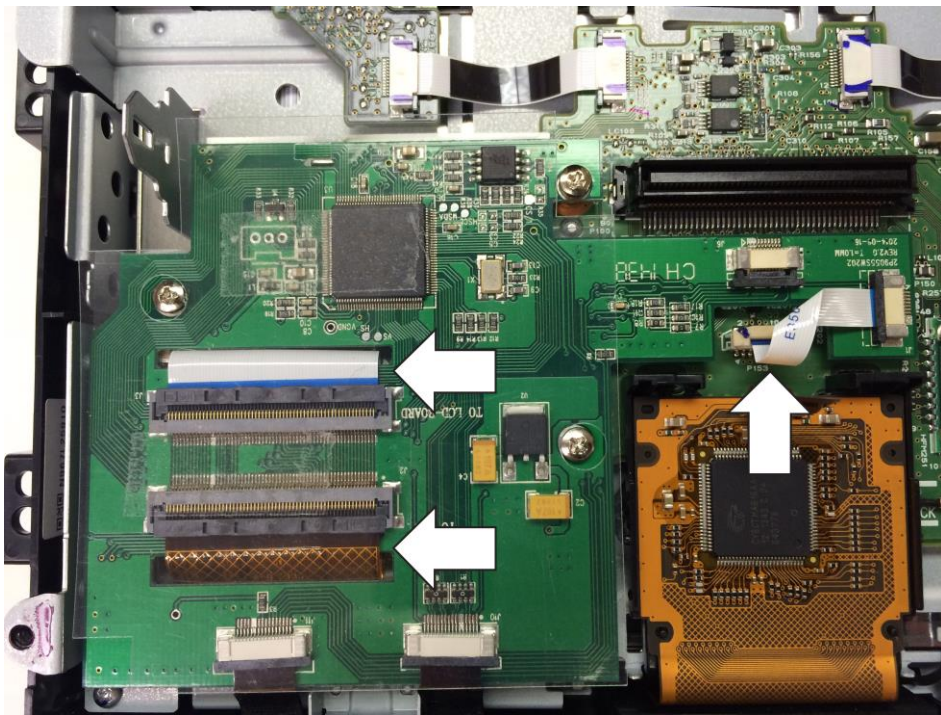
1. Carefully remove factory radio from dash
2. Carefully separate the radio front panel from radio chassis
3. Carefully disconnect (2) ribbon cables as shown above
4. Remove (3) screws from factory PCB board as shown above



Insert the supplied ribbon cable to factory PCB board as shown (Noted the metal contact should face downward)



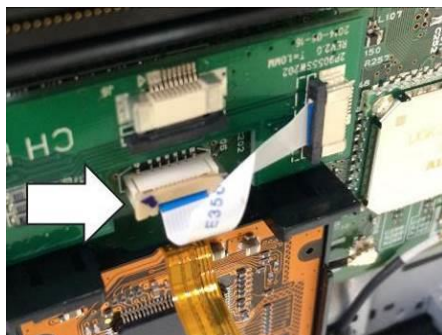
# Honda Civic / Fit 2014-2015 Installation



1. Route the wide ribbon cables thru the slots of the new supplied PCB board and connect to new PCB board accordingly as shown
2. Connect the new small ribbon cables from the new PCB board to the factory PCB board as shown on the right side of image above
3. Re-use the factory screws to secure the new PCB board to the radio panel



Correct orientation of wide ribbon cables

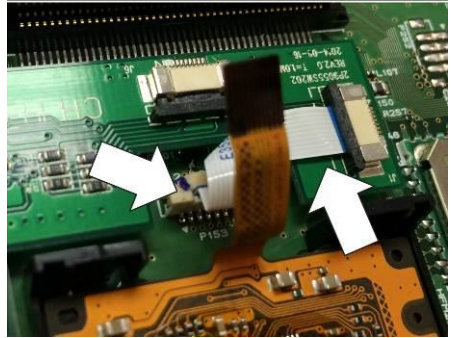


Orientation of small ribbon cable connection

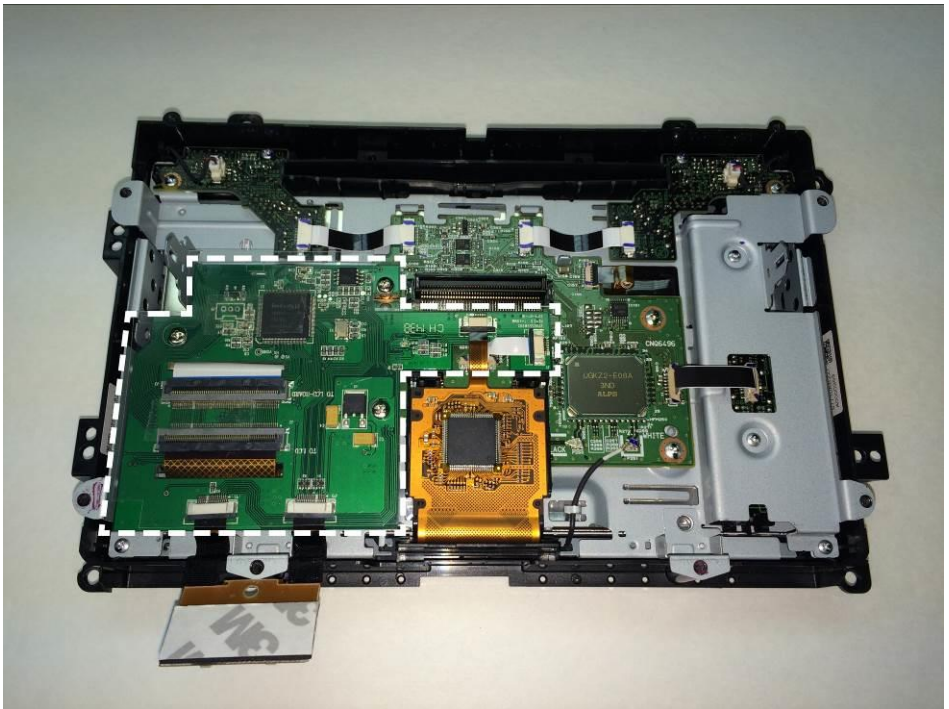
## Honda Civic / Fit 2014-2015 Installation



Reuse (3) screws to secure the board



Connect the factory small ribbon cable to the new board

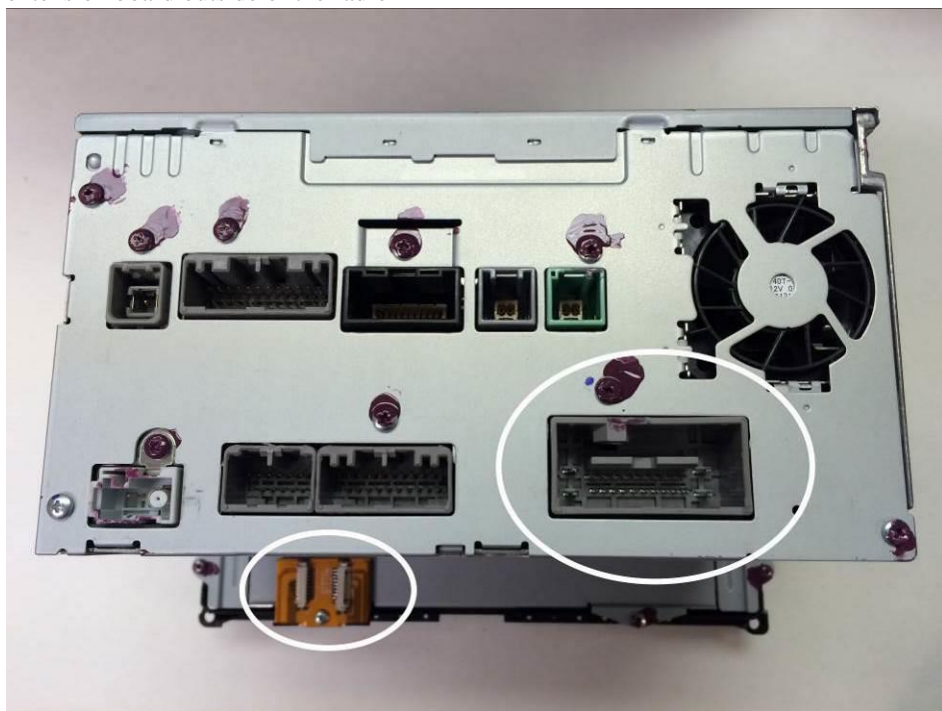


1. Recheck all connections and secure of the board
2. Tape on the supplied plastic protection sheet on top of the PCB board as shown
3. Notice the extension board at the bottom before reinstall the radio chassis

## Honda Civic / Fit 2014-2015 Installation



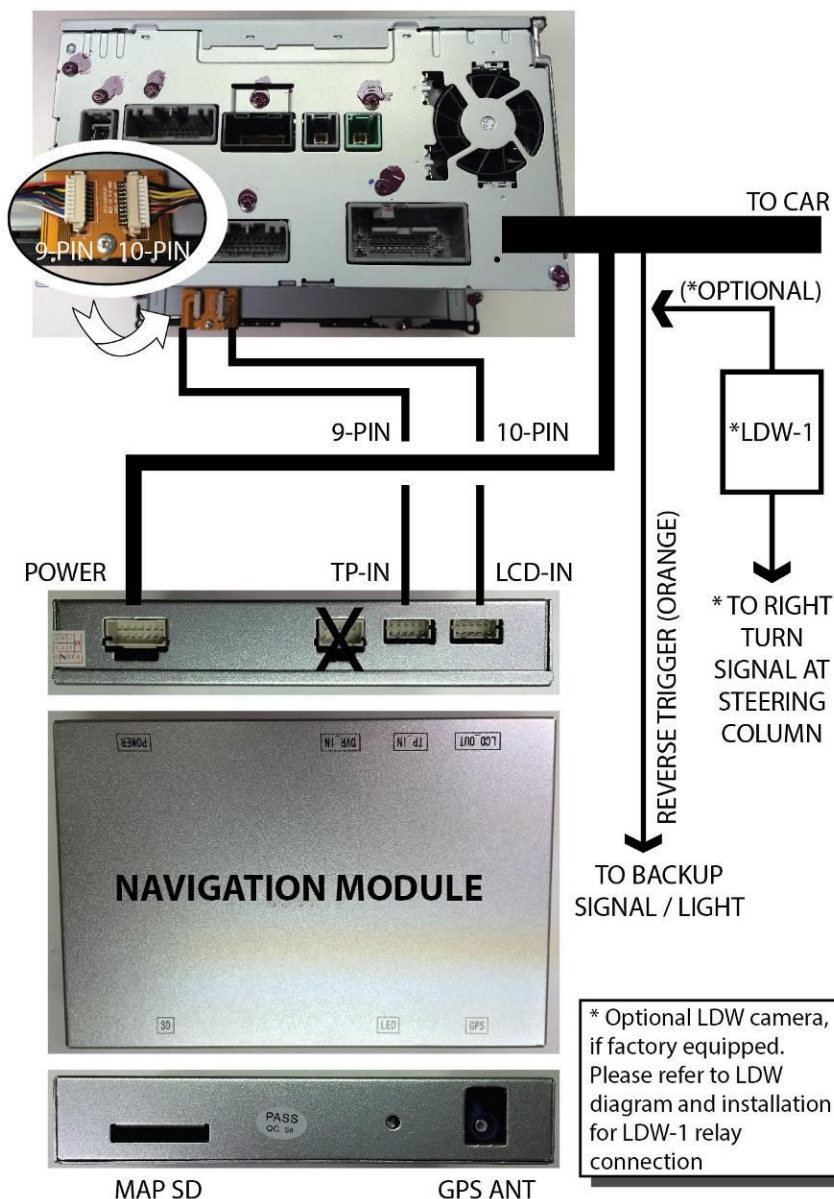
Carefully reinstall the radio chassis and use the factory screws and tape to secure the extension board outside of the radio



Refer to the following diagram for wiring connections



# Honda Civic / Fit 2014-2015 Installation





**Honda Civic / Fit 2014-2015 Installation****Honda (Lane Watch Camera / Back Up Camera)  
Supplemental Installation Manual**

**This manual will provide instruction on how to wire the  
LDW (Lane Watch Camera) and Back Up Camera for  
HONDA Navigation System**

Vehicle with *Back Up Camera ONLY*

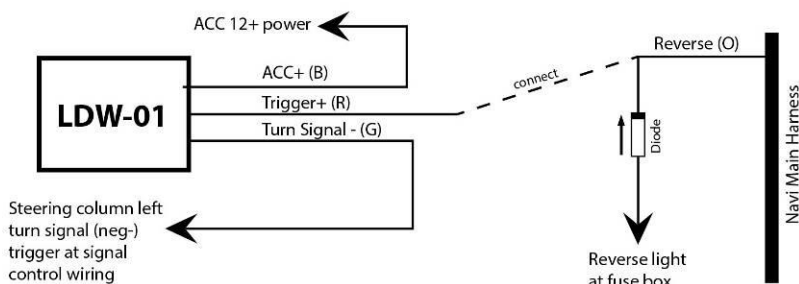
1. Connect Reverse Trigger wire (Y) to vehicle reverse light at fuse box

Vehicle with *Back Up Camera AND LDW*

1. Use LDW-01 relay
2. Connect black wire to ACC 12+ power source
3. Connect red wire to Reverse Trigger wire (Orange)
4. Connect combined Reverse Trigger wire with diode to reverse light at fuse box
5. Connect green wire to steering column RIGHT turn signal *negative* trigger

**Caution:**

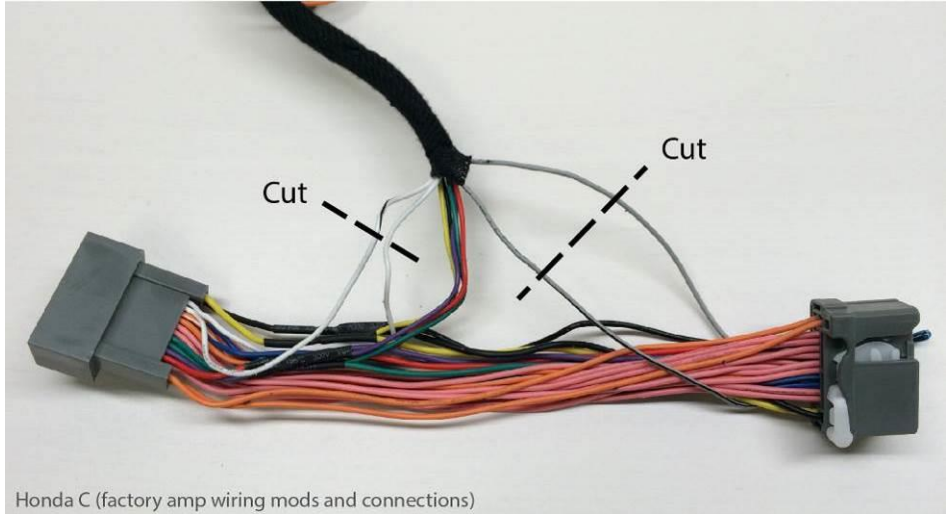
Please refer to diagram below. Fail to follow the instruction might damage the navigation system and car electrical system. Always test before making final connection.



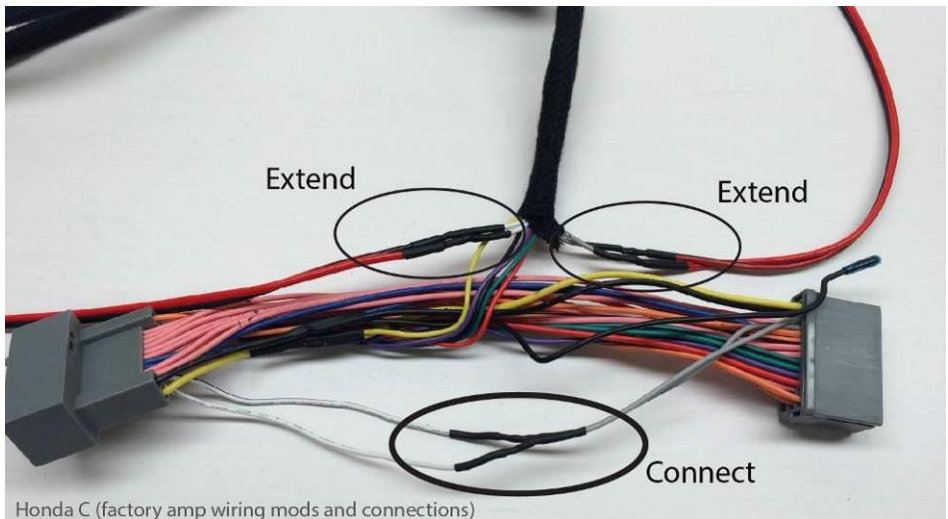
## Honda Civic / Fit 2014-2015 Installation

### Honda C System with Factory Premium Sound External Amplifier

Please refer to the following modification if vehicle is equipped with factory premium sound external amplifier



Unwrap the navigation main harness to access the wires illustrated above



Cut and Connect the Gray(+), Gray/Blk(-) and White(+), White/Blk(-) wires as shown

Extend the wires as indicated above to the factory amp location

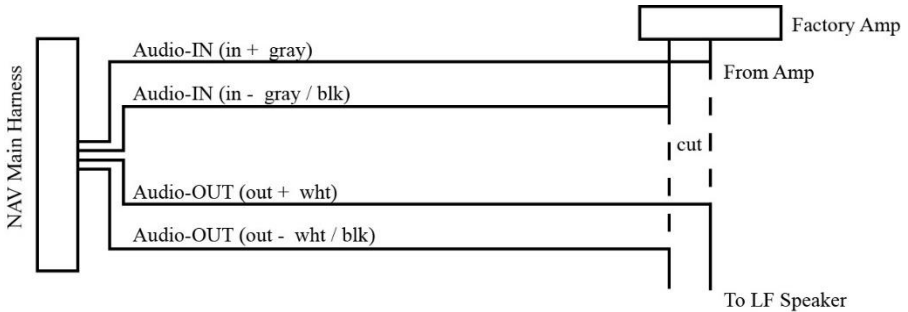
## **Honda Civic / Fit 2014-2015 Installation**

Locate factory premium sound external amplifier

Locate driver side door speaker output wires from external amplifier

Connect Audio-IN wires (+pos and –neg) to audio output from factory amplifier

Connect Audio-OUT wires (+pos and –neg) to speaker wires



## **Honda Civic / Fit 2014-2015 Installation**

### **Trouble Shooting**

Please follow all the steps in this installation manual, failure to do so might void the product warranty and damage the factory radio

#### **Power**

Navigation system should have (2) led lights on the module box for indication of power and data connections.

#### **Display**

##### **No Display**

1. There are two led lights at the GPS module to indicate data and power. If led lights are OFF and radio is ON, check the power fuse inside the black box from the main harness
2. Check all wiring connectors for any loose connection
3. Check all wiring shielding for any damage during the installation process
4. Check all wiring for any type of damage
5. Check display Y cables for loose, misalignment, or damage

##### **No Touch Response**

1. Check NAV mode ONLY for touch responses
2. Check led lights for power and data indications
3. Check Display Switch Box connections for any loose connection, or damage

##### **No GPS software loaded, touch screen alignment screen occurred**

1. Check map SD card at GPS module, see any sign of missing, loose, pop-out, misalignment, or damage
2. Turn on DIP switch 6 to activate touch panel calibration and check for improvement

#### **Sound**

1. Check all cable for connections to Audio Box for loose, or damage
2. Check software volume settings, ensure volume is not muted
3. Check connections at radio for loose, damaged wires