

NAV-TV

INTERFACING THE FUTURE

3950 NW 120th Ave, Coral Springs, FL 33065 TEL 561-955-9770 FAX 561-955-9760

NNG-Toyota 1

Navigation interface for select Toyota vehicles

NTV-KIT583



SoftTouch Navigation System
2012-2014 Toyota 1 Navigation Instruction

Parts Identification	Page 1
Vehicle Preparation	Page 2
Programming Switch Settings	Page 3
Installation	Page 4

NNG-Toyota 1 Kit Content



1. Toyota 1 GPS Interface

2. Toyota 1 Internal Modification PCB

3. Toyota 1 Plug & Play T-Harness (power)

4. Toyota 1 Secondary Plug & Play T-Harness

5. TP/LCD Input/Output Cables
6. Audio Switch Module

7. PCB LCD/TP Y-Cable

8. Rear-LCD Cable

9. Audio Y-Adapter

10. Optional OEM/NAV Toggle Switch

11. GPS Antenna

STOP

YOU MUST READ THESE WARNINGS AND NOTICE BEFORE PRODUCT HANDLING AND INSTALLATION!

PRODUCT AND VEHICLE APPLICATION WARRANTY DISCLAIMER

WARNING ! The Navigation Electronic Components are sensitive to Electro-Static Discharge (ESD). DO NOT HANDLE THE NAVIGATION ELECTRONIC COMPONENTS WITHOUT PROPER ESD GROUNDING DURING INSTALLATION. FAILURE TO USE PROPER ESD PROTECTION WHEN HANDLING THE NAVIGATION COMPONENTS WILL VOID THE PRODUCT WARRANTY.

WARNING ! Installation of this Navigation Electronics product in the vehicle radio head unit must be performed by a professional technician that is experienced with proper work methods, ESD handling requirements, and knowledgeable of specific procedures for radio disassembly, Navigation Electronics installation, and re-assembly of the vehicle Radio Head Unit as well as proper handling requirements of all components involved. FAILURE TO FOLLOW PROPER DISASSEMBLY, INSTALLATION, AND REASSEMBLY PROCEDURES AND PROPER COMPONENT HANDLING REQUIREMENTS MAY RESULT IN IRREVERSIBLE DAMAGE TO THE VEHICLE RADIO HEAD UNIT AND/OR THE NAVIGATION ELECTRONICS AND WILL VOID THE PRODUCT WARRANTY!

WARRANTY DISCLAIMER NOTICE! Radio removal, disassembly, installation of Navigation Electronics, and Radio re-assembly / re-installation is the responsibility of the installer. It is recommended that you contract a professional installer that is experienced with proper work methods involving electronics and knowledgeable of specific procedures for radio disassembly, Navigation Electronics installation, and re-assembly / re-installation of the Radio Head Unit in the vehicle.

WARNING

To avoid dangerous distractions that may lead to an accident, the driver should never operate the system while the vehicle is in motion. Before installing this product, the seller should inform the end-user of proper use and compliance with the proper instructions and all state and federal laws.

Vehicle Preparation

Before beginning your installation, familiarize yourself with the installation instructions and the SoftTouch Navigation system components.

To ensure your safety, **(A)** apply the emergency brake and **(B)** read this entire manual before beginning.



CAUTION: It is advisable to disconnect the negative battery cable for 3 minutes before beginning installation, to avoid unintended air bag deployment. Note and record any anti-theft radio codes prior to disconnecting.

Default Programming Switch (Dip Switch) Settings**Version 1 (V1) system using external speaker**

1 ON (OEM/NO CAMERA) 1 OFF (ADD-ON CAMERA)
2-8 OFF

Version 2 (V2) system integrate with car speaker

1 ON (OEM/NO CAMERA)
1 OFF (ADD-ON CAMERA)
2-6 OFF
7 ON
8 OFF

System must be POWER OFF when changing DIP SW SETTING



Installation



Remove air vent to access upper radio screws.



Remove trim pieces to access lower screws.



Remove four screws securing radio/screen unit.



Release connectors from upper dash trim.



Remove upper dash trim from radio.



Gently tilt radio away from dashboard.



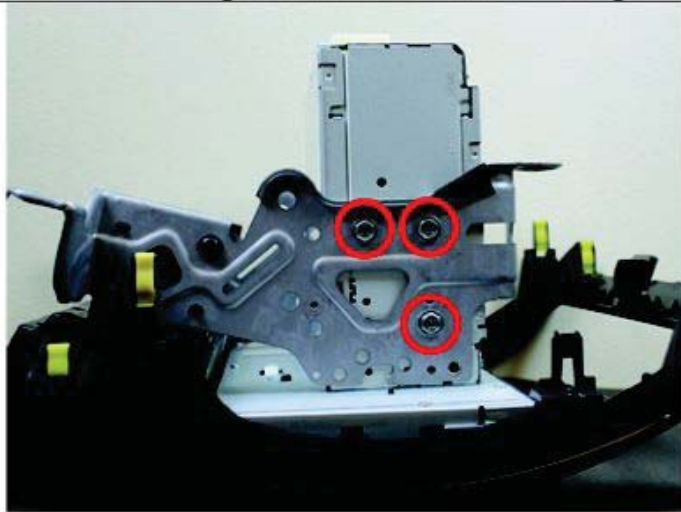
Release harnesses from rear of radio/screen.



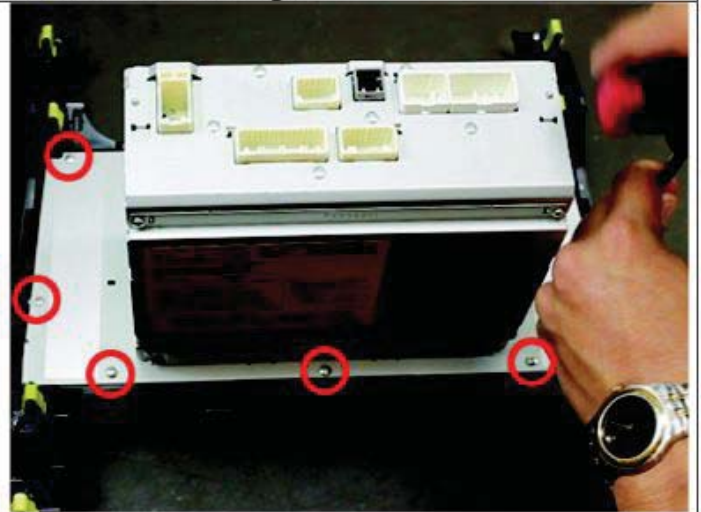
Lift screen away from dashboard.

Navigation Interface Module Installation

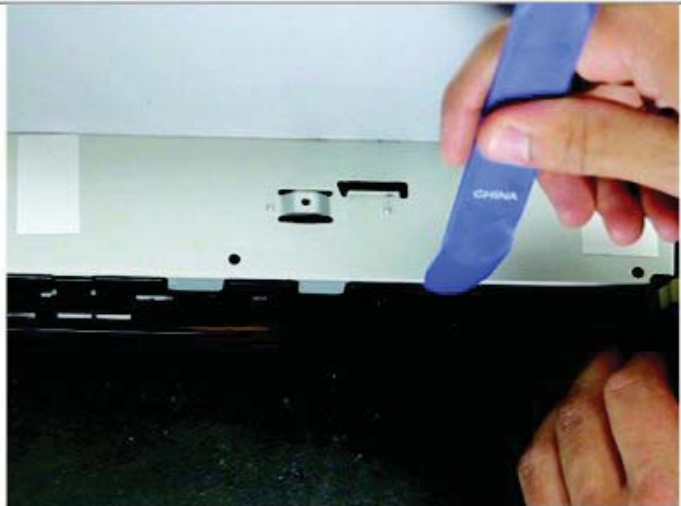
ESD Warning: Do not handle the navigation interface circuitry without taking proper electrostatic discharge precautions making sure both the installer and navigation unit are properly grounded before touching any interior radio or navigation components. The warranty on this product is immediately voided if these precautions are not taken and the navigation unit and/or radio are damaged due to electrostatic discharge.



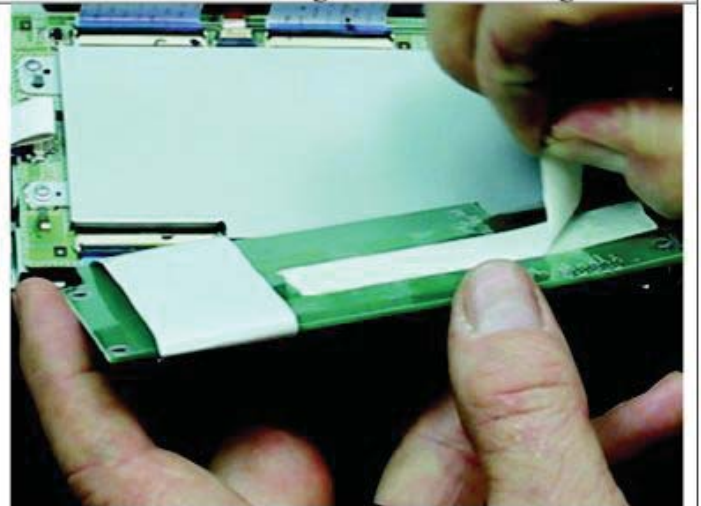
Remove radio brackets from each side.



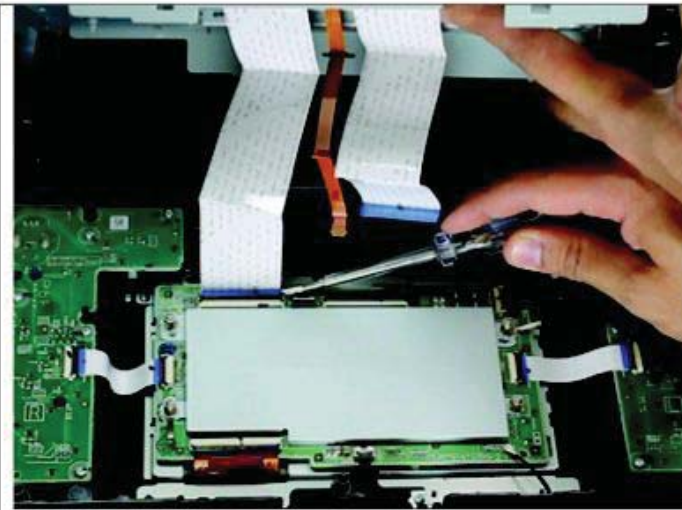
Remove screws securing the screen housing.



Use a trim tool to release the screen tabs and then lift the housing to access the radio's interior.



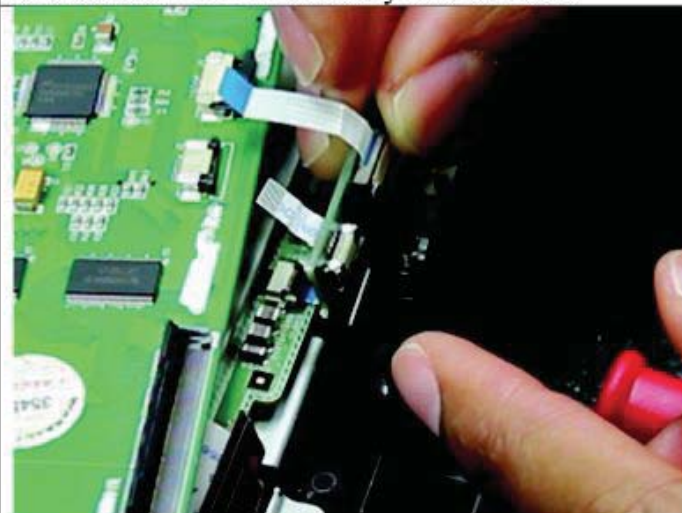
Remove the backing from the double-sided tape of the nav board and secure it to the metal cover below



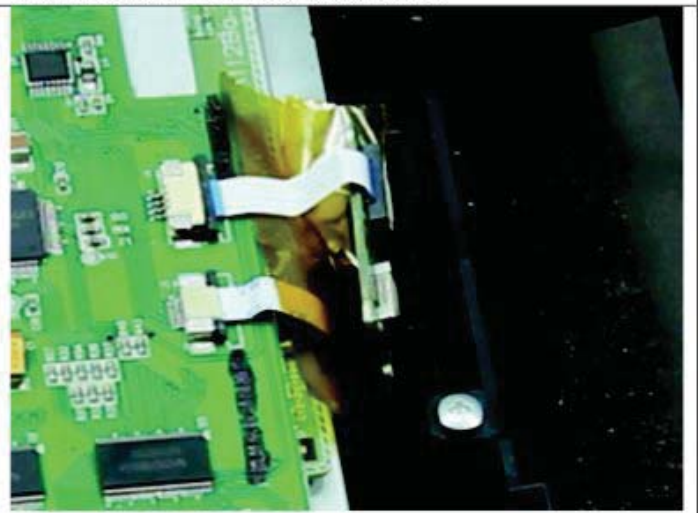
Installer note: To gain more flexibility while installing the navigation interface board in the next steps, you can release the tabs to remove the ribbon cables attached the main body to the screen.



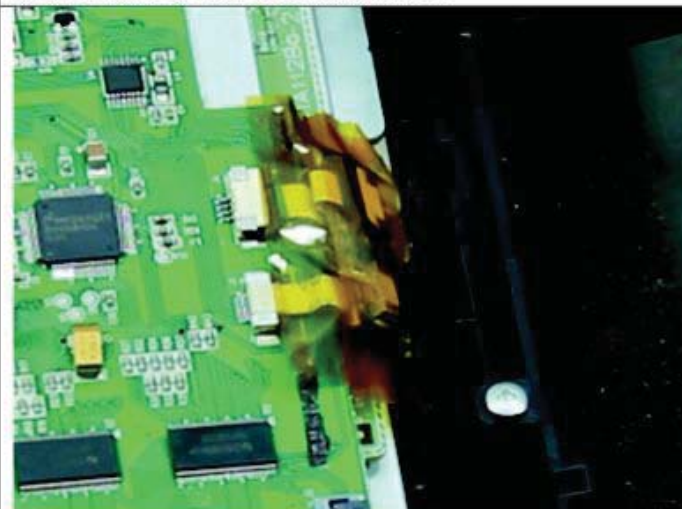
Disconnect the large brown ribbon cable from the factory board and insert the ribbon cable from the nav interface board. Then insert the brown ribbon cable into the nav interface board.



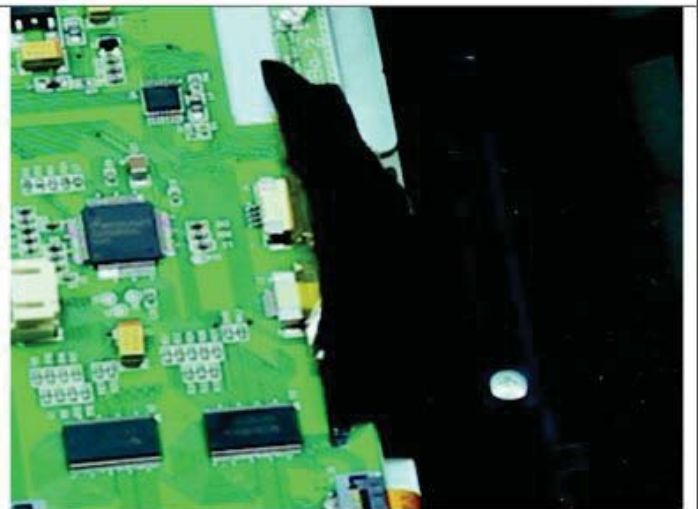
Disconnect the small brown ribbon cable from the factory board and insert the ribbon cable from the nav interface board. Then insert the brown ribbon cable into the nav interface board.



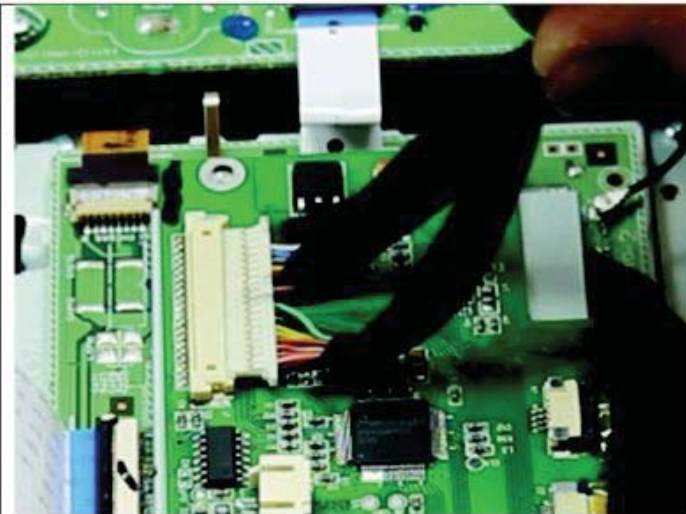
Place one of the included ESD tape strips over any exposed metal underneath the small navigation interface board.



Place the second ESD tape strip over nav board.



Use included cloth tape over ESD tape to secure it.



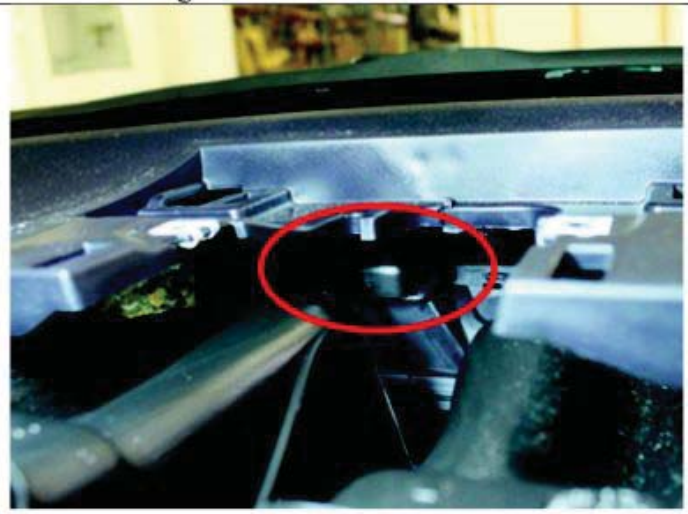
Connect LCD-IN/TP-IN Extension Harness to the navigation interface board.



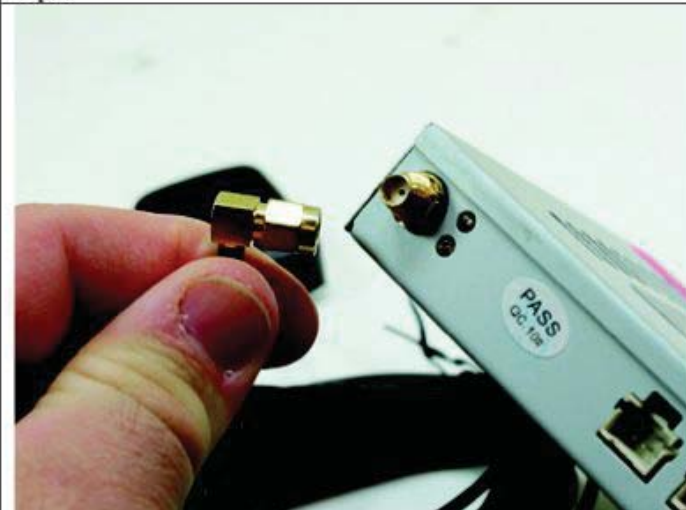
Route the LCD-IN/TP-IN Extension Harness from the radio's interior through the opening in the back of the housing.



Attach the included metal plate to the interior of the vehicle's dashboard using the supplied double-sided tape.



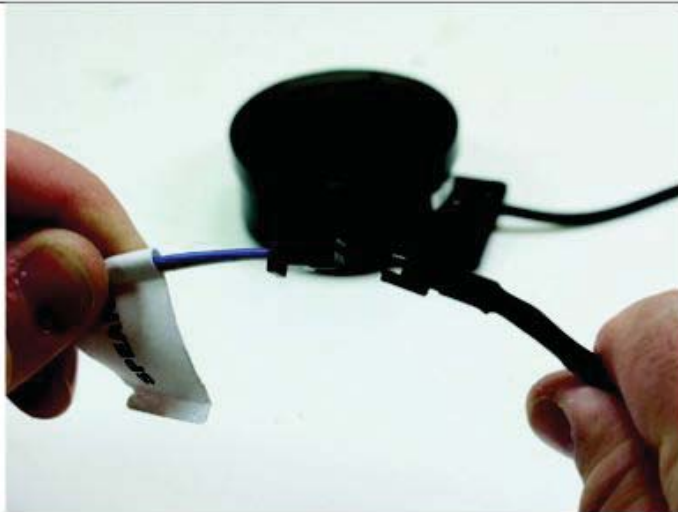
Place the included GPS antenna atop the mounted metal plate and allow its magnetic base to secure it to the plate.



Located the threaded connector of GPS antenna.



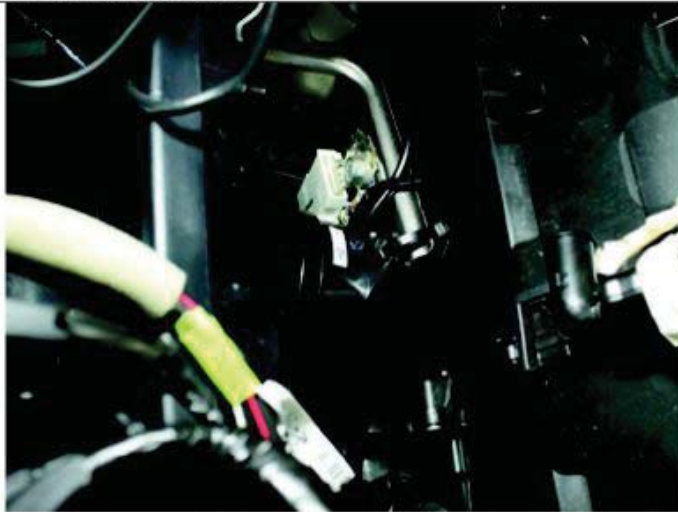
Thread GPS antenna onto navigation module.



Connect the included speaker to the speaker extension harness.



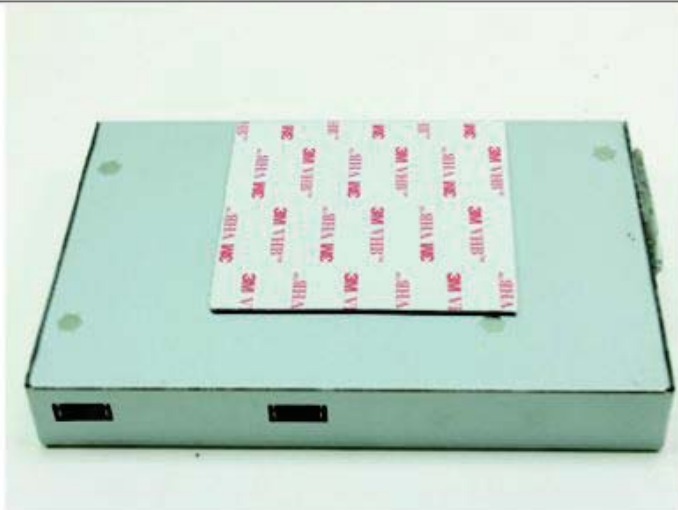
Connect the speaker extension harness to the navigation module.



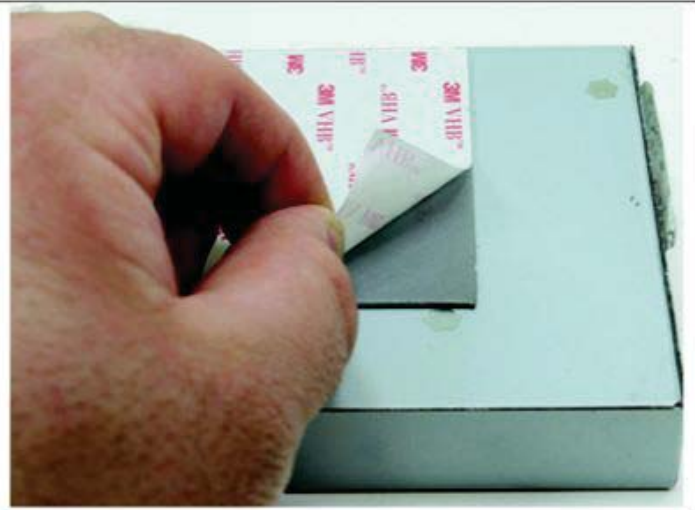
Using the supplied cable ties, mount the navigation speaker to the dashboard support brackets behind and below the radio unit.



Using the supplied alcohol pad, thoroughly clean the underside of the factory radio and navigation unit.



Once clean, press the supplied VHB tape firmly to the bottom side of the navigation module.



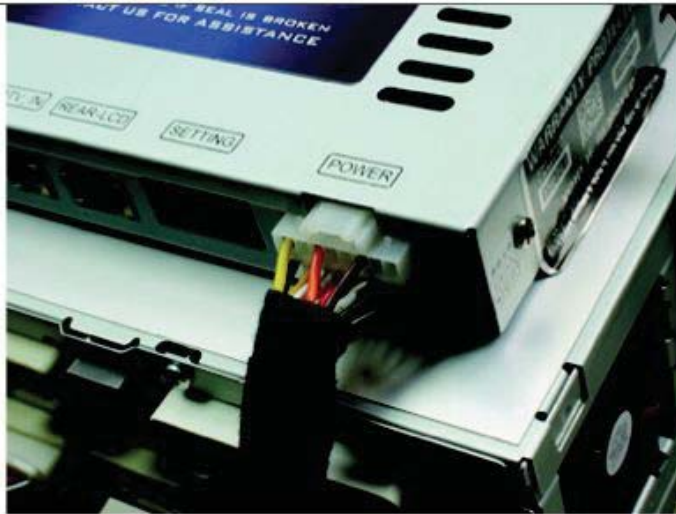
Peel the protective layer from the VHB tape making sure no debris comes into contact.



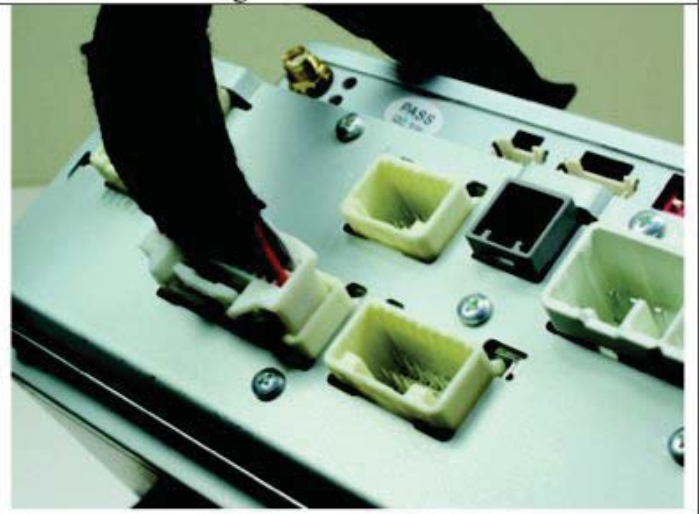
Connect the yellow and pink color-coded TP-IN and LCD OUT harnesses to the rear of the navigation module.



Firmly press the navigation module to the bottom side of the factory radio allowing the VHB to adhere the two together.



Connect the power harness from the supplied t-harness to the POWER connector of the navigation module.



Connect the radio interface plug from the supplied t-harness to the backside of the radio.



Reconnect all previously disconnected harness from the backside of the factory radio.



Radio component replacement is the reverse of removal.

Navigation System Testing



Turn on the vehicle's ignition.

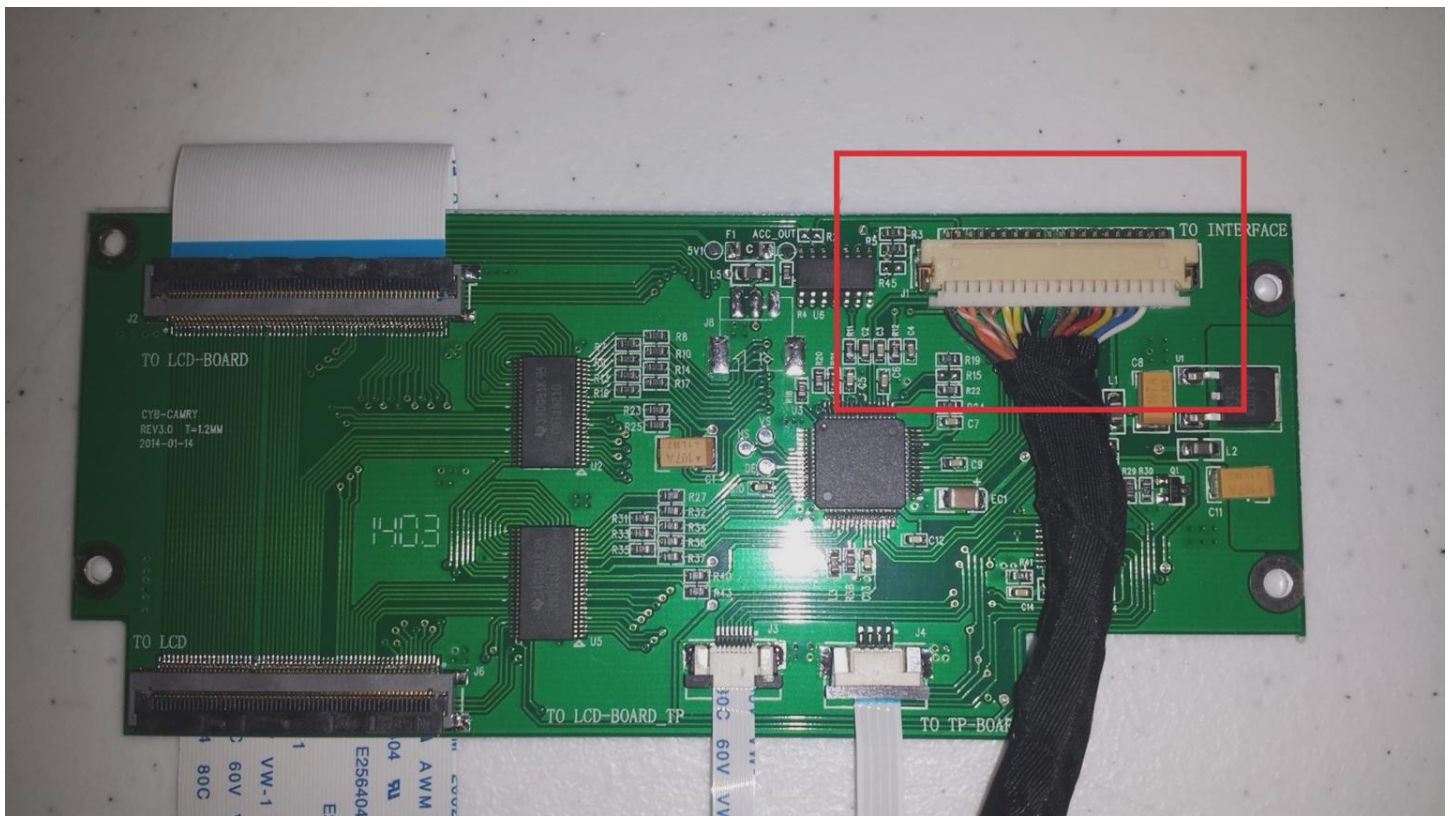
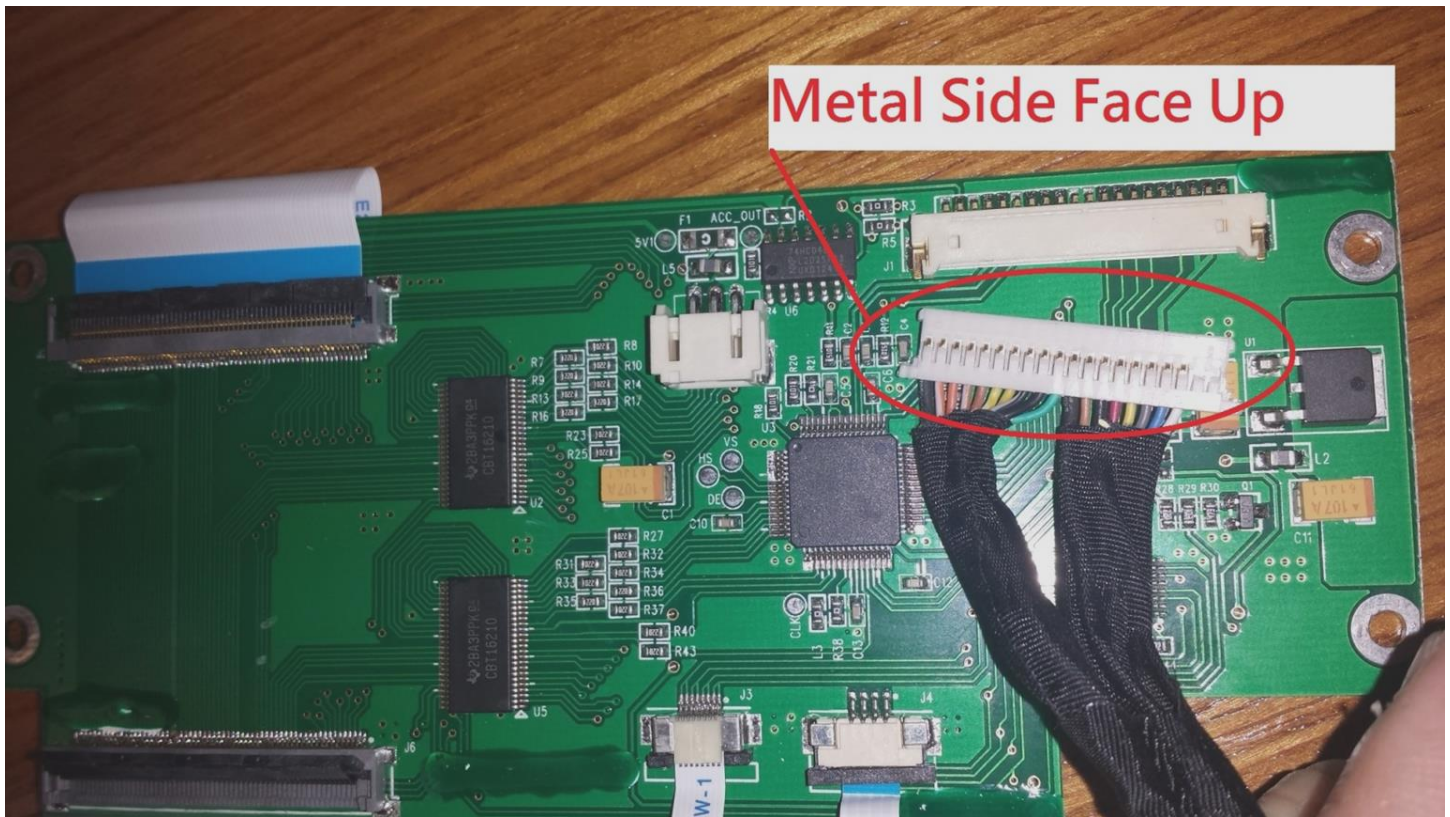


Press the steering wheel's phone hang up button for 2 seconds to switch to the navigation interface.

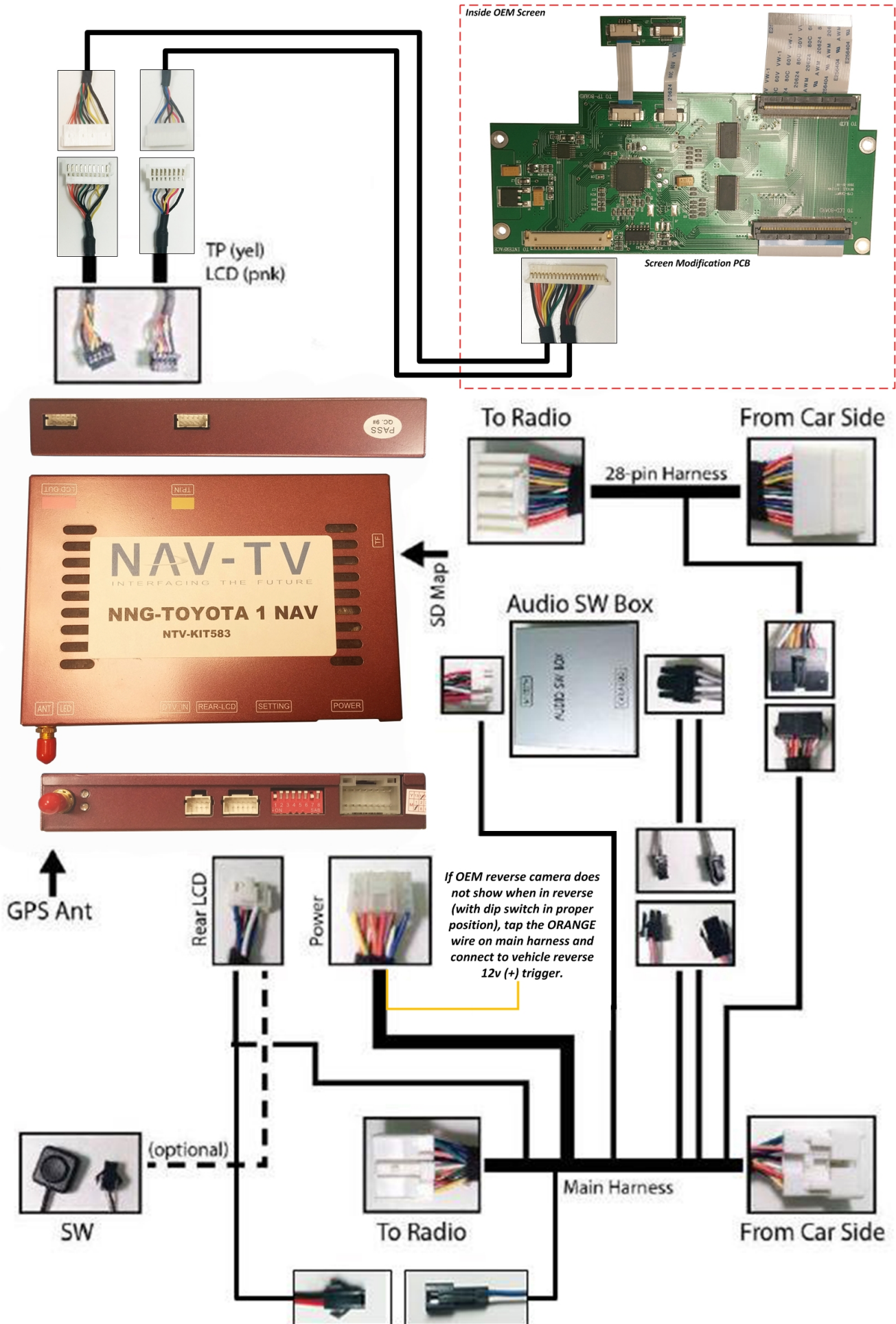


Once the steering wheel's phone hang up button has been pressed, the navigation screen should be displayed.

Metal Side Face Up



NNG-Toyota 1 Wiring Diagram





IGO PRIMO MAP PATH SETTING

1. Press Setup -> Navigate Setup
2. Press on the Folder Icon
3. Select the following path in Storage Card -> cyb_navi.exe
4. Press HOME button on the top left corner and press
NAVIGATION
5. System should be able to run into "IGO PRIMO"

WEAK /NO GPS SIGNAL?

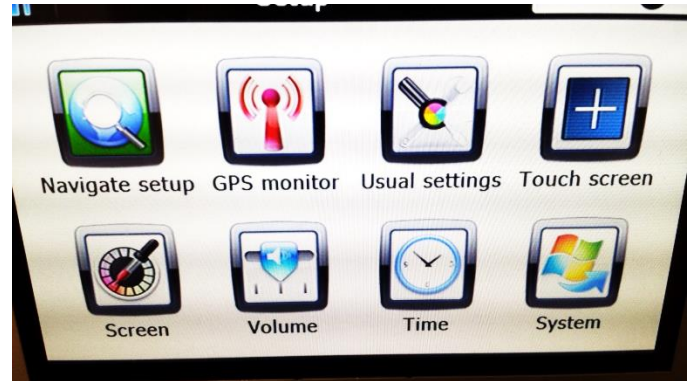
Tips to Improve GPS Antenna Signal if vehicle equipped Metallized Windshield*

"GPS MONITOR Tools"

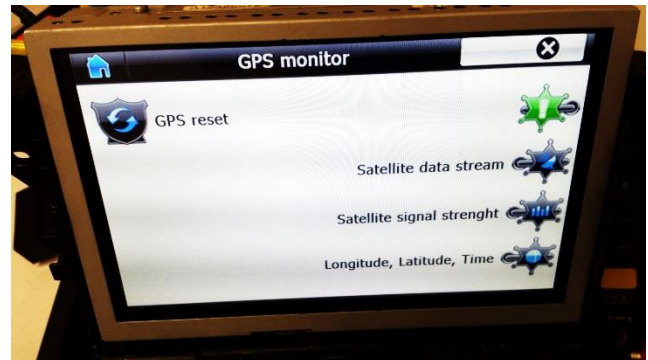
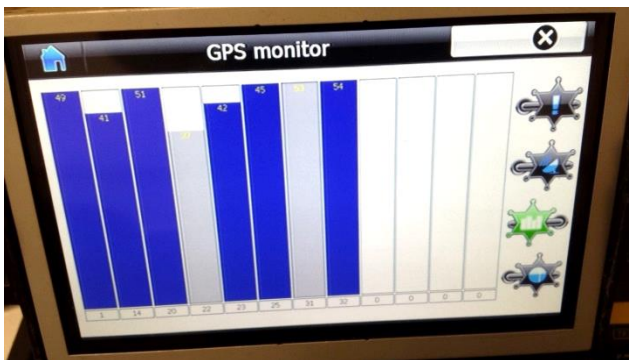
Exit IGO MAP by press SHUT DOWN BUTTON



Console> SETUP

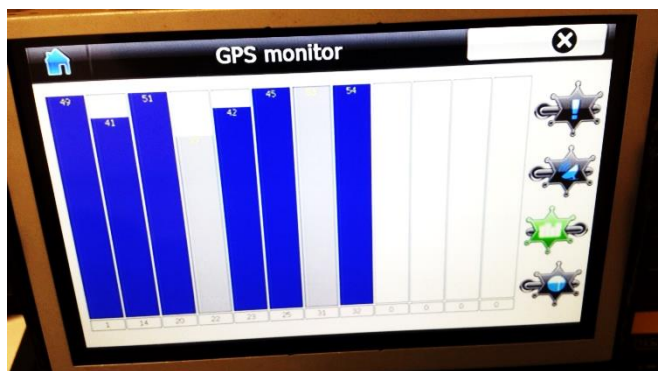
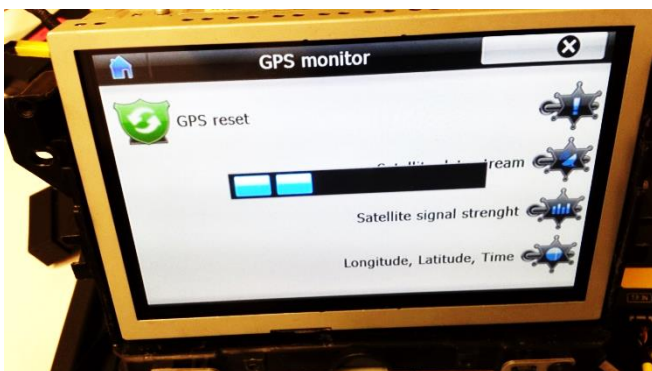


GPS MONITOR



Locate the Antenna with minimum 5 bars in dark blue or Gray bar

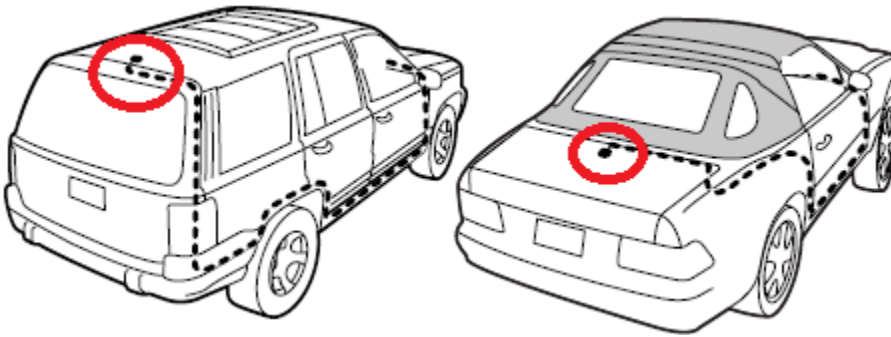
(Always suggest mounting the GPS antenna on the roof)



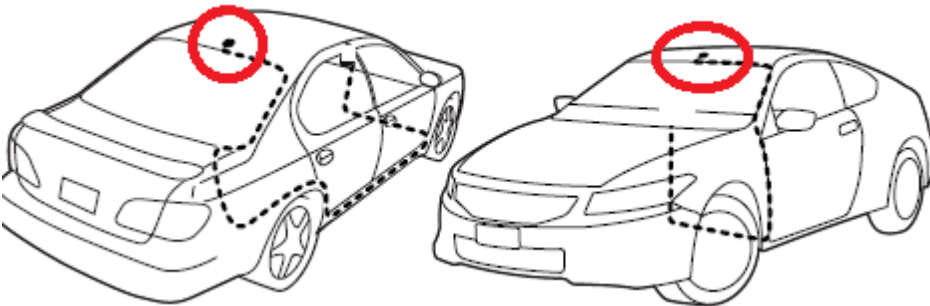
Press "!" icon to reset GPS signal and change the Antenna position

PROPER GPS ANTENNA POSITION

if vehicle equipped *Metallized Windshield



SUV/Coupe



Sedan



TRUCK (Shown as Tundra)

Alternatively, installer might choose to mount Antenna inside the headliner or inside vehicle using GPS monitor tools (see instruction). However, stay away from the windshield.

* Windshields with metal particles can interfere with radio waves, dash-mount satellite radio receivers, and GPS receivers may be affected external transmitters and receivers may be required.