

# NAV-TV

INTERFACING THE FUTURE

3950 NW 120<sup>th</sup> Ave, Coral Springs, FL 33065 TEL: 561-955-9770 FAX:

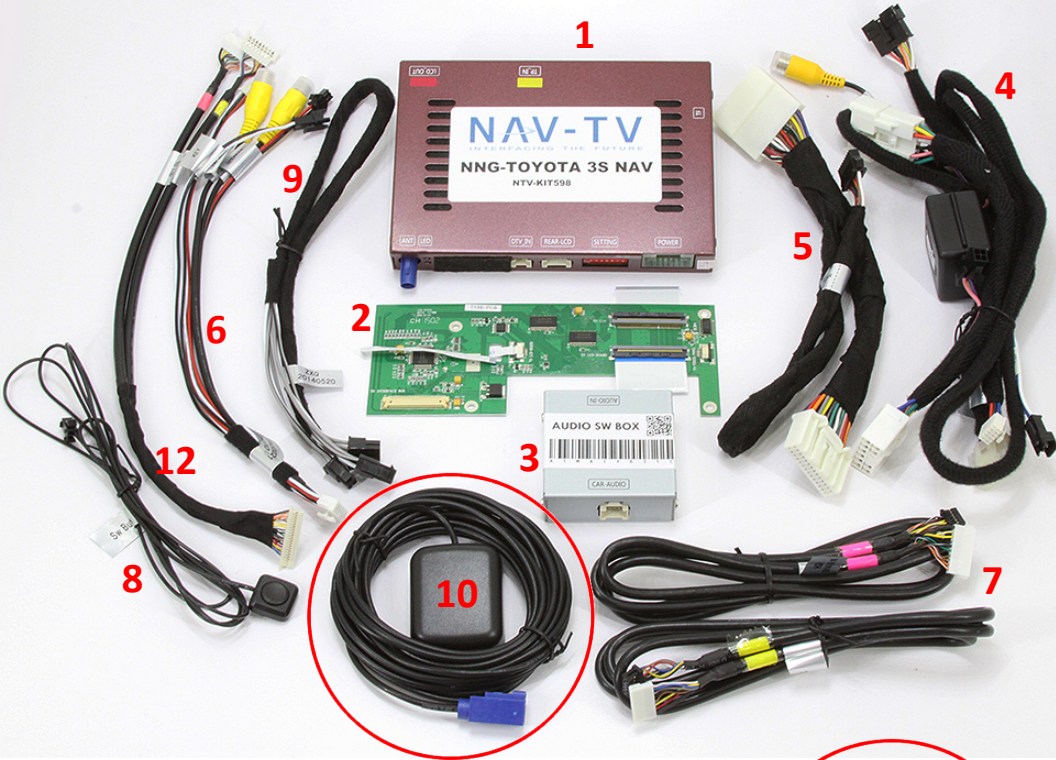
## NNG Toyota 3/3s

Navigation System for select Toyota  
*NTV-KIT553/598*



*NTV-DOC217*

# NNG-Toyota 3/3s Kit Content



1. Toyota 3 or 3s GPS/Interface
2. Toyota 3 or 3s internal Modification PCB with Y-adapter
3. Audio Switching module
4. Toyota 3 Plug & Play T-Harness
5. Toyota 3 secondary Plug & Play T-Harness
6. Rear-LCD Harness
7. TP and LCD Harnesses
8. Optional NAV/OEM switch
9. Audio In/Out Y-Adapter
10. GPS Antenna - Fakra (KIT598 only)
11. GPS Antenna - Twist-on (KIT553 only)
12. TP and LCD Harness extension (to PCB)



GPS Antenna - Twist-on  
(KIT553 only)

## Toyota 3 navigation system application guide

2014 – 2015	Tundra	(7" Entune Plus Apps Radio)
2014 – 2015	Tacoma	(6.1" Entune Plus Apps Radio)
2014 – 2015	Sequoia	(6.1" Entune Plus Apps Radio)
2015	Avalon	(6.1" Entune Plus Apps Radio)

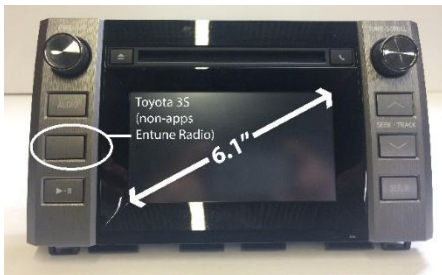
## Toyota 3S navigation system application guide

2014 – 2015	Tundra	(6.1" Entune <i>non-apps</i> Radio)
2014 – 2015	Tacoma	(6.1" Entune <i>non-apps</i> Radio)

**\*\* Toyota 3/3S navigation system only applicable to the above radios only. Please verify the correct radio application when ordering and proceeding to installation. \*\***



Toyota 3                      7" Tundra / 6.1" Tacoma / Sequoia / Avalon (Entune Plus Apps Radio)



Toyota 3S                      6.1" Tundra / 6.1" Tacoma (Entune non-Apps Radio)

**DO NOT PROCEED IF YOU RECEIVE A WRONG SYSTEM. Contact your distributor for exchange immediately. All open box / used system will void the warranty.**

**WARRANTY DISCLAIMER NOTICE!** Radio removal, disassembly, installation of Navigation Electronics, and Radio re-assembly / re-installation is the responsibility of the installer. It is recommended that you contact a professional installer that is experienced with proper work methods involving electronics and knowledgeable of specific procedures for radio disassembly, Navigation Electronics installation, and re-assembly / re-installation of the Radio Head Unit in the vehicle. **INSTALLATION DAMAGE TO THE VEHICLE RADIO HEAD UNIT IS EXPRESSLY NOT COVERED UNDER THE PRODUCT WARRANTY.**

To avoid dangerous distractions that may lead to an accident, the driver should never operate the system while the vehicle is in motion. Before installing the product, the seller should inform the end-user of proper use and compliance with the proper instructions and all states and federal laws.

Before beginning your installation, familiarize yourself with the installation instructions and the Navigation system components.

**CAUTION:** It is advisable to disconnect the negative battery cable for 3 minutes before beginning installation, to avoid unintended air bag deployment. Note and record any anti-theft radio codes prior to disconnecting.

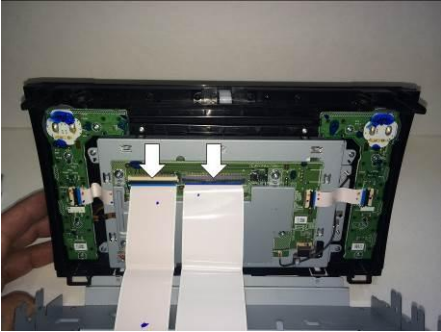
## **Installation**

**This is a general installation guide for navigation system. There will not be any instruction on dash / radio removal. Please refer to Toyota service manual for removing radio from dash.**

**\* The following steps are for ALL radios types, please follow these steps accordingly. You will be notified for specific steps later regarding Toyota 3 and Toyota 3S system. \***



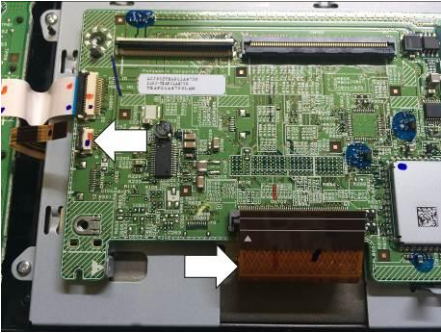
Remove screws as indicated from back and top of radio



Disconnect the (2) ribbon cables carefully before separating the radio front plate



Remove (4) screws from panel



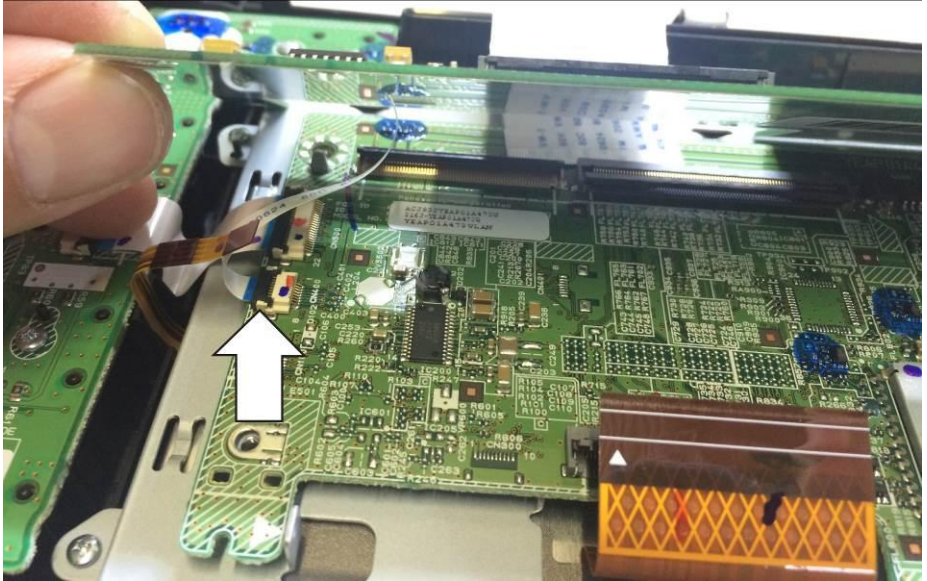
Disconnect the (2) ribbon cables carefully



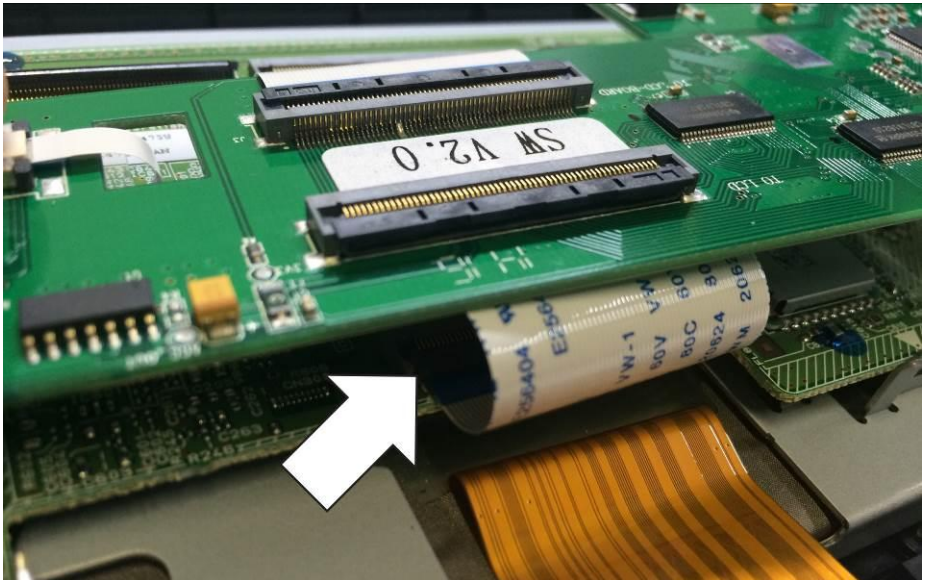
Install (4) spacers provided



**Toyota 3 Installation**

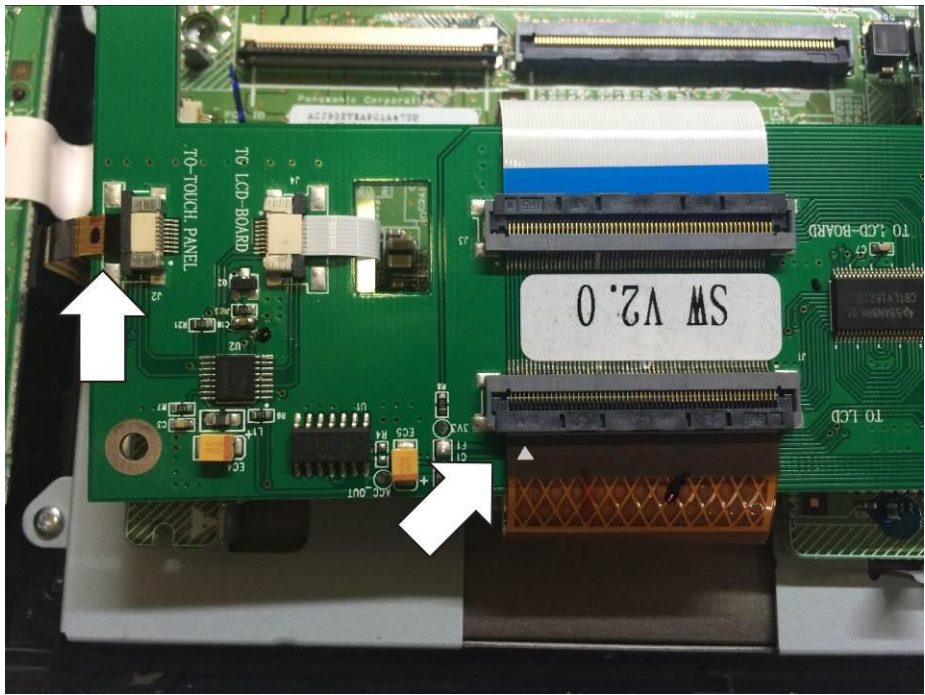


Connect the small touch ribbon cable to the PCB as shown. Notice the metal contacts should be facing downward

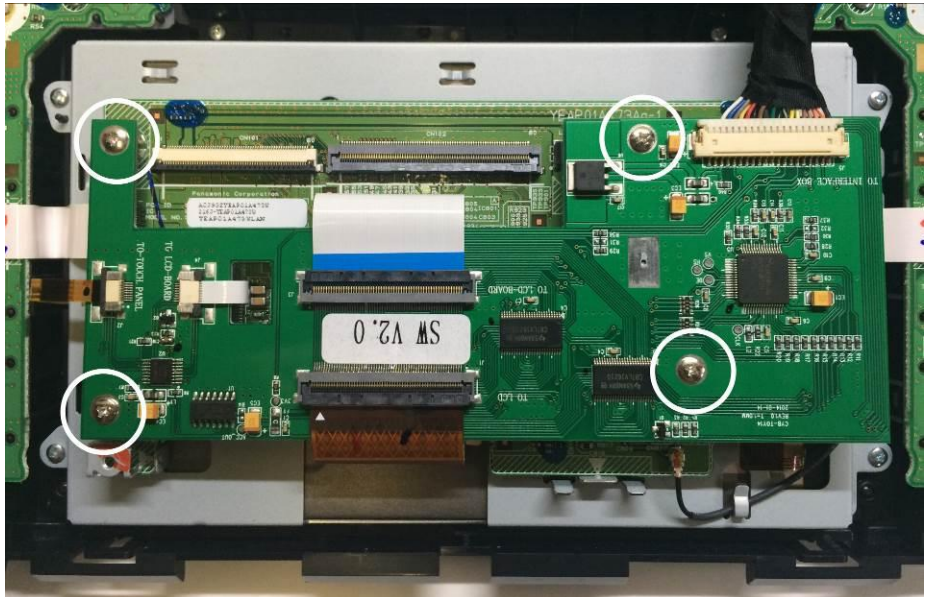


# Toyota 3 and Toyota 3S Navigation System Installation NTV-DOC217

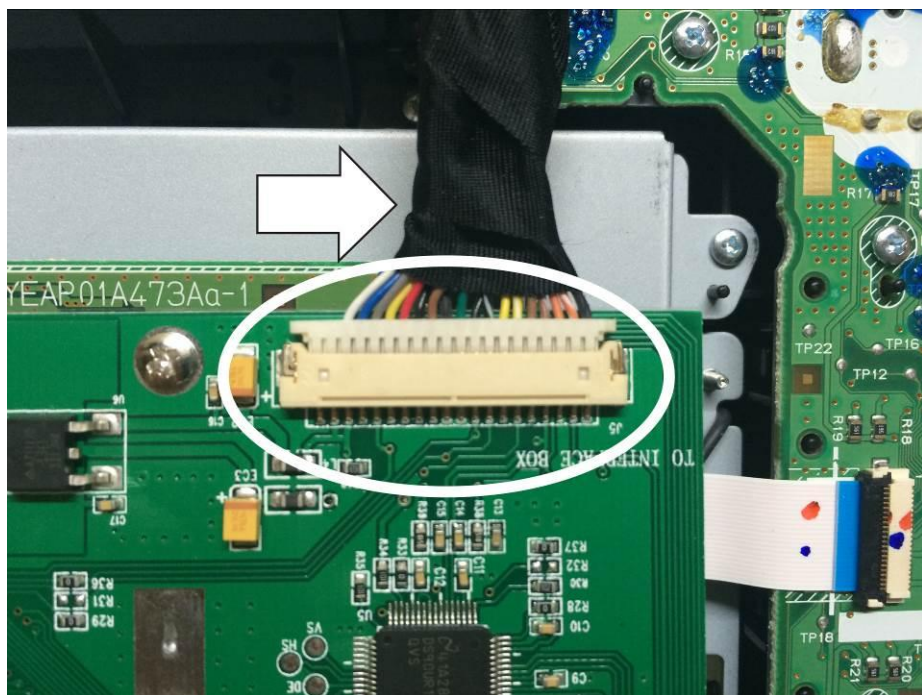
Connect the wide LCD ribbon cable to the PCB as shown. Notice the metal contacts should be facing downward



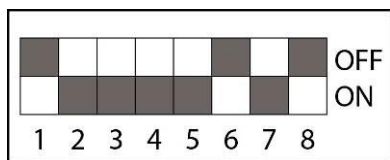
Connect the factory ribbon cables to the PCB board as indicated



Install (4) screws provided. Check all connections carefully



Connect the LCD/TP harness to the PCB board as shown. Notice the metal pins are facing up



**Toyota 3** dip switch setting

Dip switch	1 6 8	ON	
	2 3 4 5 7	OFF	with factory equipped camera

Turn dip switch 1 OFF if installing after-market camera

## End of Toyota 3 installation

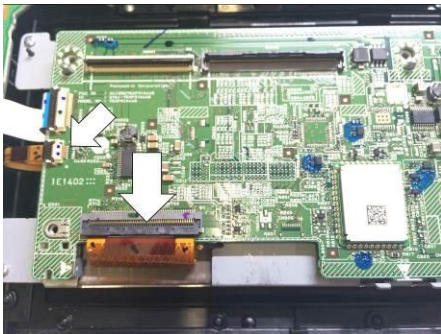


Toyota 3S Installation

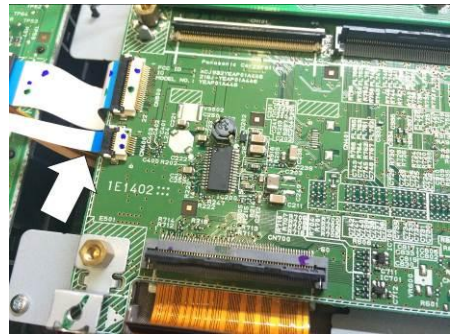
# TOYOTA 3S (non-apps Radio)



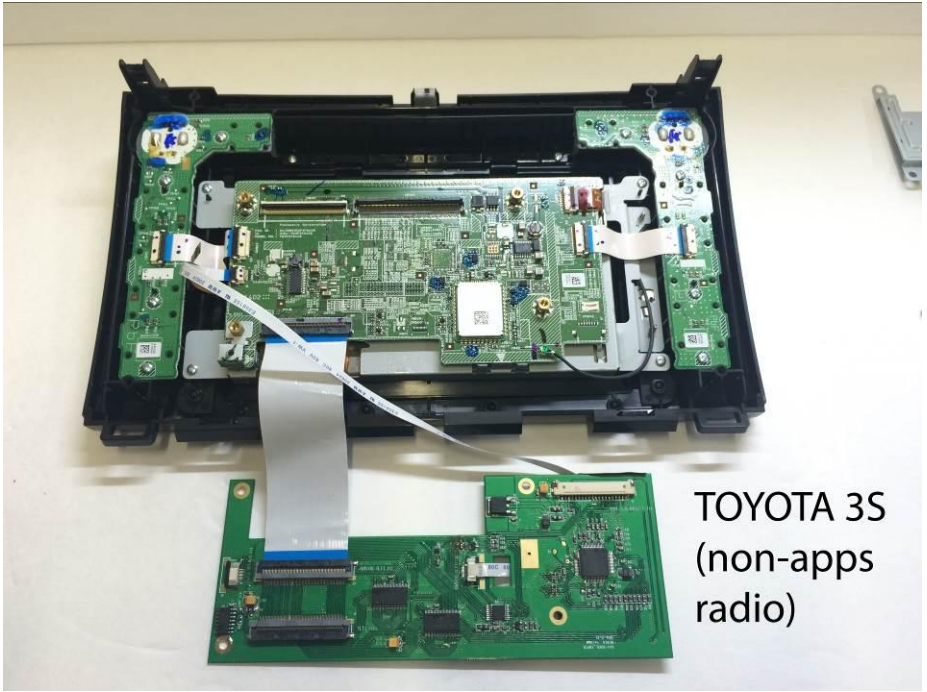
Toyota 3S (non-apps) Radio should have the wide ribbon cable on the left side of PCB board



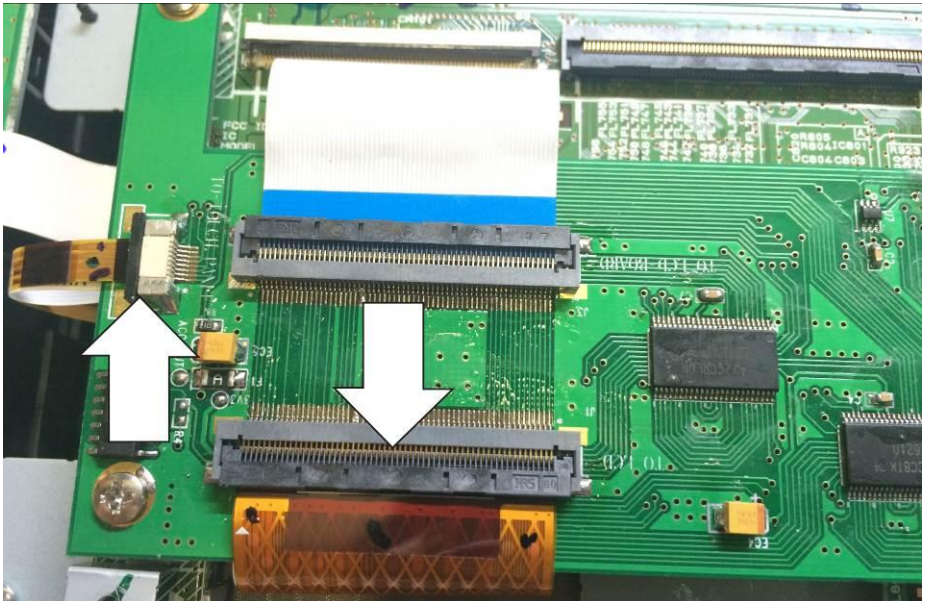
Disconnect the ribbon cables as shown



Connect the small touch ribbon cable

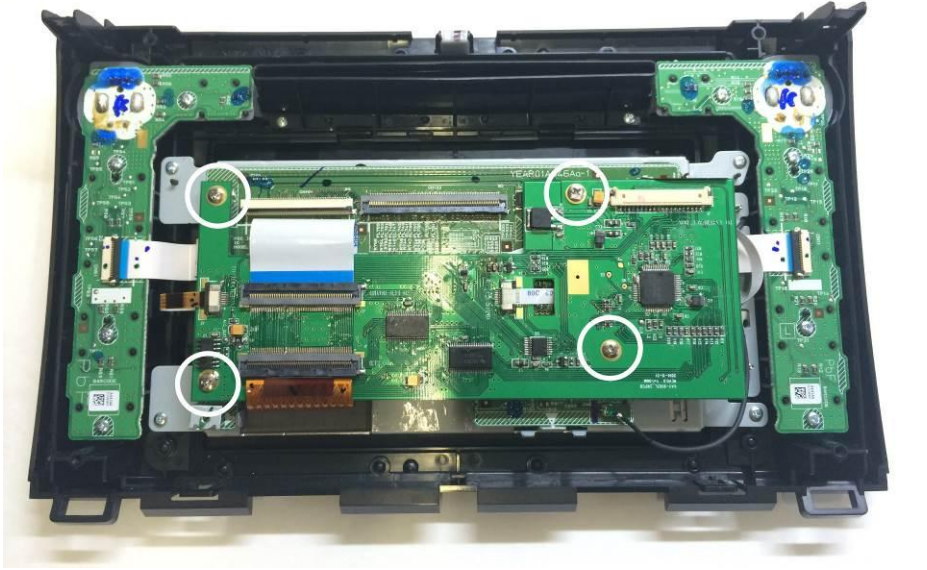


Connect the wide ribbon cable to the PCB board

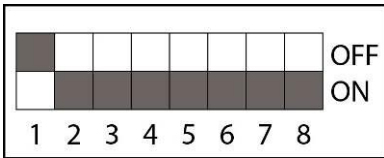


Connect the factory ribbon cables to the PCB board as shown

## TOYOTA 3S (non-apps radio)



Install (4) screws to secure the board as shown



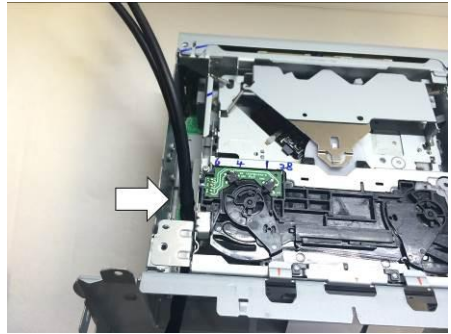
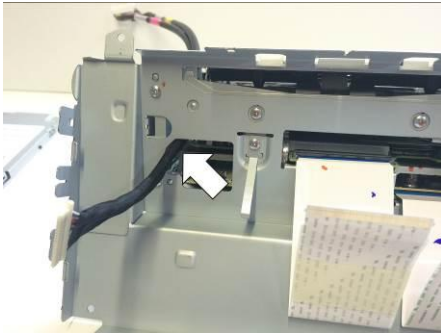
**Toyota 3S** dip switch setting

Dip switch	1	2	3	4	5	6	7	8	OFF	ON
										with factory equipped camera

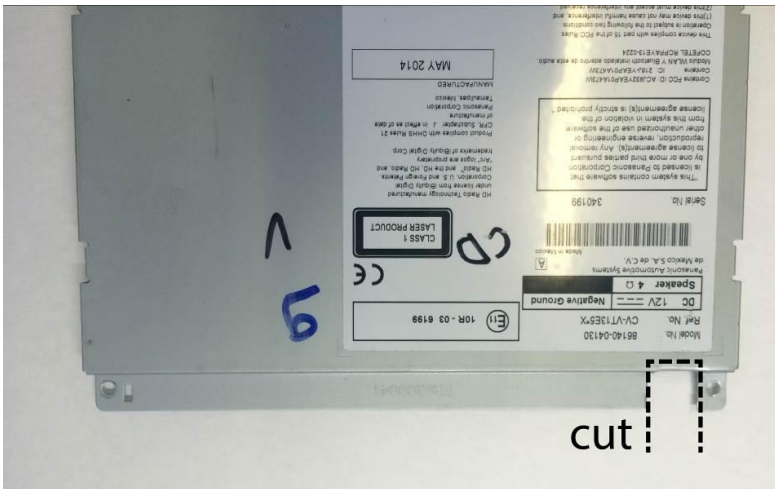
Turn dip switch 1 OFF if installing after-market camera

### End of Toyota 3S Installation





Run the LCD/TP harness as shown through the radio chassis

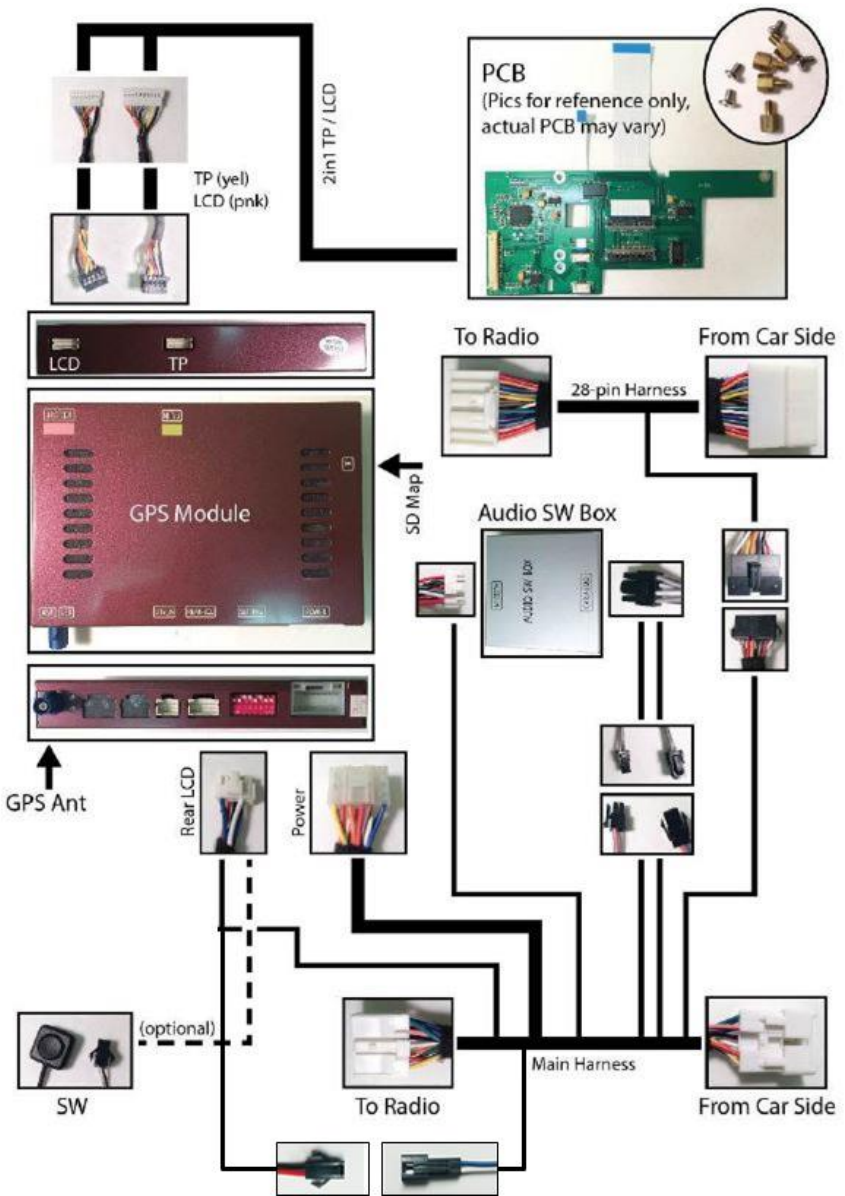


Trim the radio cover as shown



Harness exit as shown





Refer to previous page for system wiring connections

Connect GPS Antenna to GPS Module (best GPS Antenna location is under passenger side A-pillar cover, on top of dash)

Test system thoroughly before re-assemble of the radio and dash

Test reverse camera function

Test driver side speaker integration function (mute and voice from navigation software)

**FAQ**

Please follow all the steps in this installation manual, failure to do so might void the product warranty and damage the factory radio

**Power**

GPS Module has (2) led lights as indicators when system is power on. Both led lights should lit with good power. If any of the light is dimmed, you should check for B+ and ACC power sources.

**Display****No Display**

1. There are two led lights at the GPS module to indicate data and power. If led lights are OFF and radio is ON, check the power fuse inside the black box from the main harness
2. Check all wiring connectors for any loose connection
3. Check all wiring shielding for any damage during the installation process
4. Check all wiring for any type of damage
5. Check PCB ribbon cables for loose, misalignment, or damage

**No Touch Response**

1. Check both Radio mode and NAV mode for touch responses
2. Check led lights for power and data indications
3. Check 2in1 TP/LCD IN cable for any loose connection, or damage
4. Check PCB ribbon cables for loose, misalignment, or damage

**No GPS software loaded, touch screen alignment screen occurred**

Check map SD card at GPS module, see any sign of missing, loose, pop-out, misalignment, or damage

**Sound**

1. Check all cable for connections to Audio Box for loose, or damage
2. Check software volume settings, ensure volume is not muted
3. Check connections at radio for loose, damaged wires