

# NAV-TV

INTERFACING THE FUTURE

3950 NW 120<sup>th</sup> Ave, Coral Springs, FL 33065 TEL 561-955-9770 FAX 561-955-9760

## NNG-Honda 8

Navigation interface for select Honda vehicles

*NTV-KIT582*



## NTV-KIT582 NNG-HONDA 8 Kit Content



1. NNG-HONDA 8 Interface
2. Radio T-Harness (interface power)
3. Radio Modification PCB
4. Radio T-Harness (audio)
5. NAV toggle switch
6. HONDA 8 touch screen overlay
7. PCB Touch/LCD I/O Harness
8. Audio Switch Box
9. GPS Antenna
10. GPS Module
11. AV Harness/NAV switch harness
12. GPS Module Power Cable
13. Audio Switch Box Y-Cable

## Honda Odyssey Dash Removal



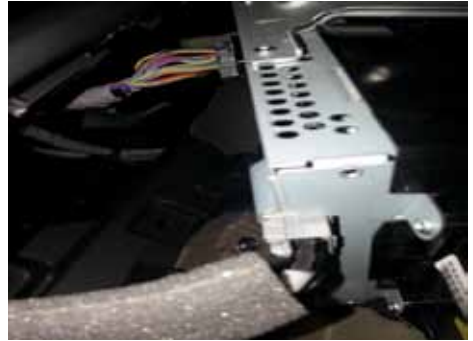
**Remove side panel**



**Remove AC Vent Panel**



**Remove 3 screws**



**Take out Screen**



**Remove 4 screws  
Take out LCD Panel**

**Get ready to place**  
1. video board  
2. touch screen panel

## Honda Pilot Dash Removal



Remove AC Vent



Remove 4 Screws



Remove top panel (pulling out with tools)



Remove 4 screws  
Take out LCD Panel



Get ready to place  
1. video board  
2. touch screen panel

### Install Touch Screen Panel Board



### Remove Front Bezel



Use pick tools to remove LCD Casing



Remove Video Board screw and 2 ribbon cable



unscrew factory video board and get ready to take off LCD panel



Place Touch Screen Panel on in from the LCD Panel

## Install Touch Screen Panel Board (II)



**Install touch panel**

Look at the provided Label to define front/back side



**Restore LCD Panel**



**Restore 3 Ribbon cable connections**



**#1 Small Ribbon for LCD panel Power**



**#2 Video Ribbon  
#3) Touch Screen Ribbon**

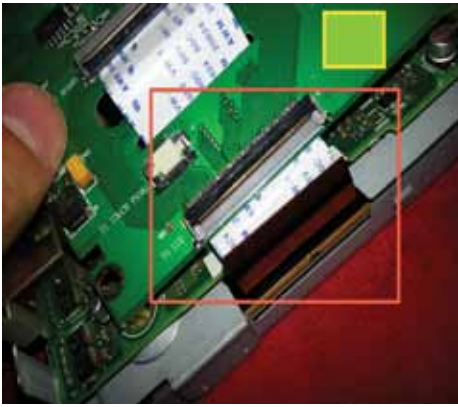


**Restore factory LCD Board  
Get ready for install  
daughter video board**

## Install Video Board



Place the provided 3 Studs into these location



- 1) Place Y-Connection on the Ribbon Cable
    - Factory Brown Ribbon go to daughter Board
    - Daughter board ribbon go to factory board
  - 2) Place Touch Screen Ribbon into daughter board
- MAKE SURE SOCKET ARE ALIGNED and CLOSED**

## Install Video Board II



Restore 3 factory screws into daughter board



Get the Panel casing



Peel off Metal Tape



Go thru video cable  
from interface module to  
the daughter board



Secure video connection



## Install Video Board III



Close LCD panel casing,  
get ready to install interface/GPS module

## Remove Protection Plastic Bezel

Remove protection plastic by pick tools

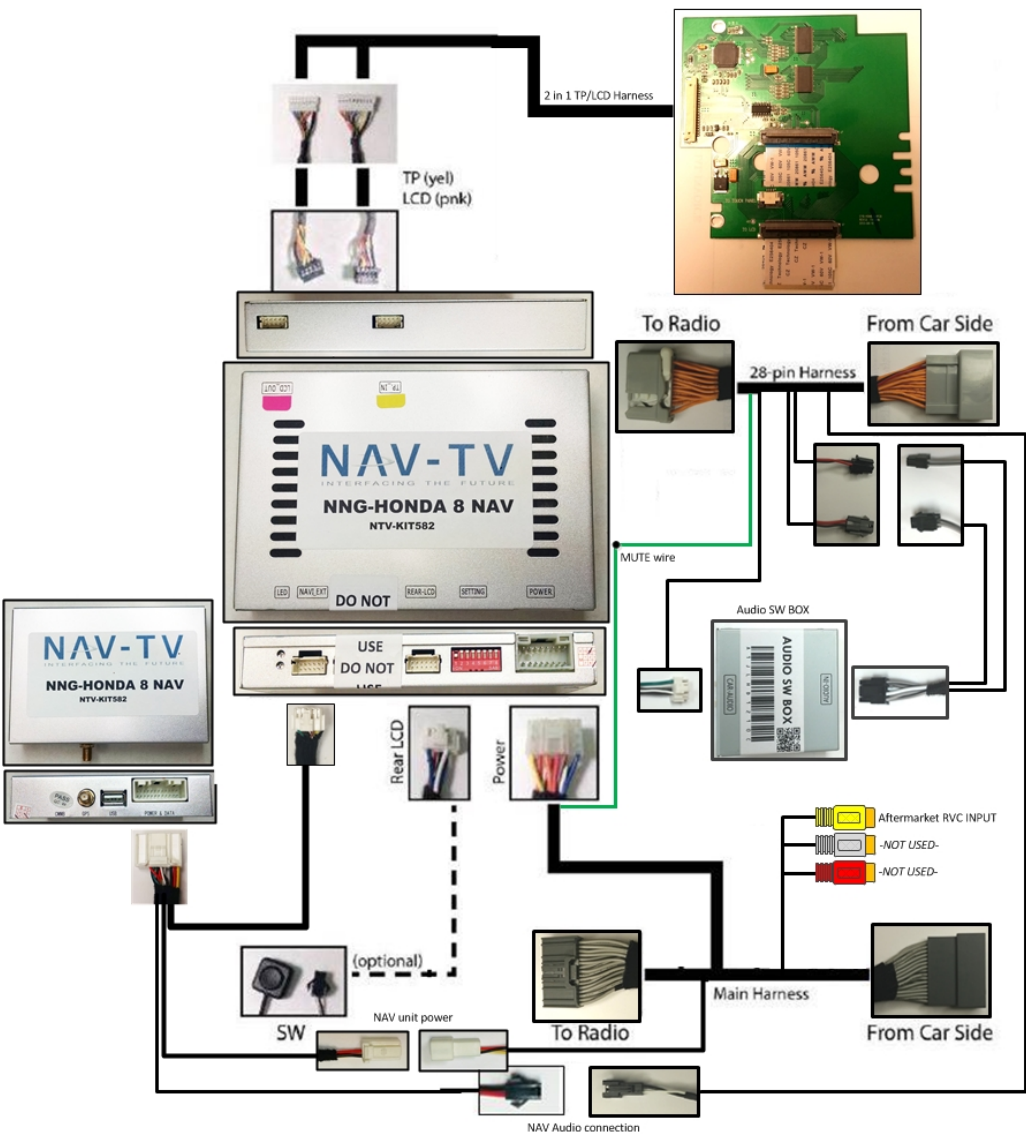


\*picture shown as odyssey, for pilot, remain the same procedure

# Installation Guide

## Navigation Honda 8"

### Overall Wiring Connection Figure



### DIP SW SETTING



- DIP SW Setting**  
 1 ON --OEM CAMERA or No Camera  
 1 OFF- AFTER MARKET CAMERA  
 2-5 OFF  
 6 OFF  
 7 OFF  
 8 OFF

## Connect Reverse Wire

### To connect OEM Camera

#1) DIP SW #1 ON

#2) Connect reverse wire

#### Honda Odyssey



Honda Odyssey with OEM camera

- 1) Under driver side fuse box
- 2) Left green connector
- 3) Brown wire (reverse wire)
- 4) Tap the brown wire into Reverse wire (orange)

#### Honda Pilot



Honda Pilot with OEM camera

- 1) At the passenger side open Kick panel and find blue connector.
- 2) Tap the orange wire into interface box Reverse wire (orange)

Please note that reverse wire might locate differently, above information is for reference only.

You may find reverse wire at other location and connect it to the interface box reverse wire (orange)

### To connect Aftermarket Camera

#1) DIP SW #1 OFF (reset power everytime change dip sw)

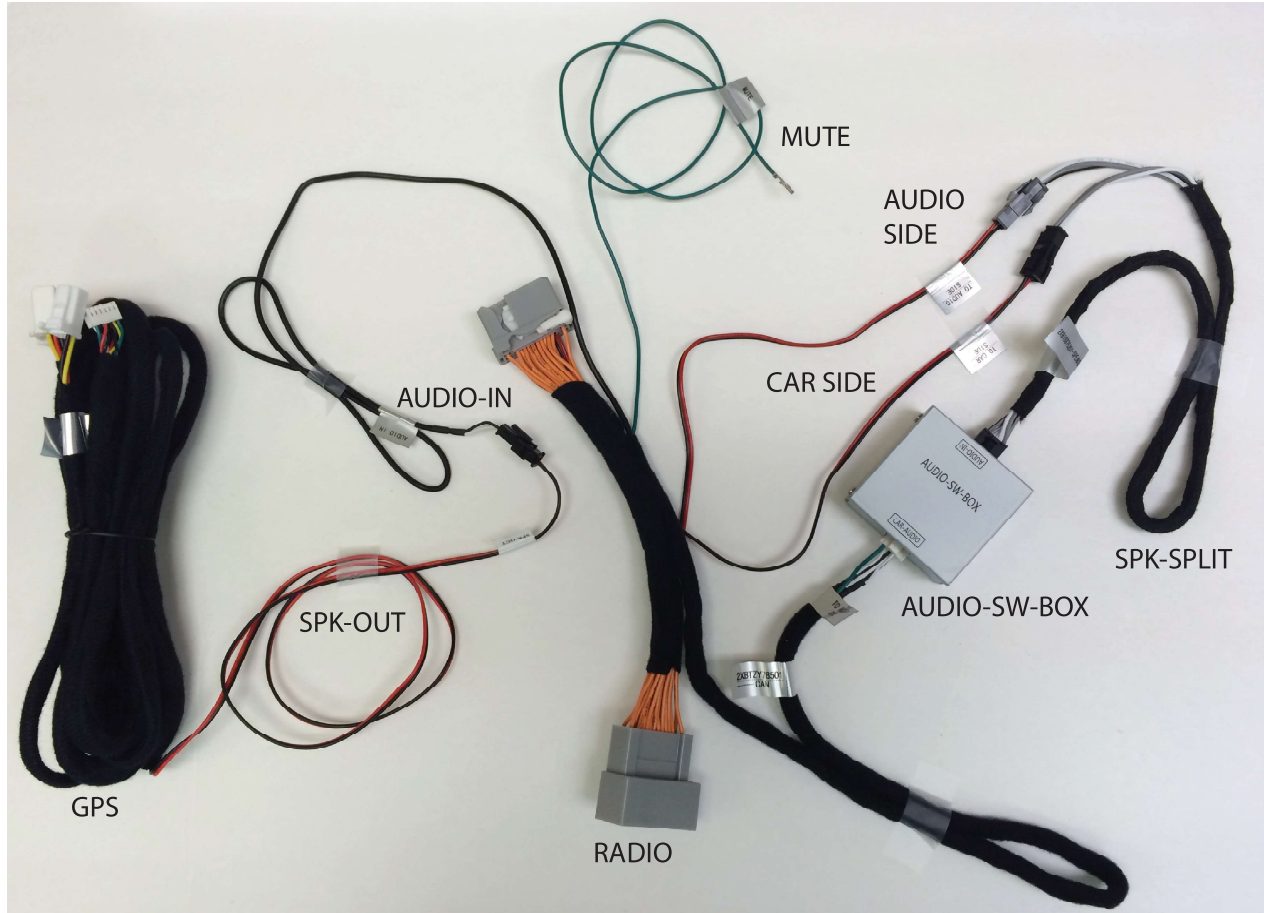
#2) Connect reverse trigger to interface box orange reverse wire

#3) Connect RCA Camera input to the interface box

# HONDA 8

## Audio Integration Instruction Manual

This navigation system comes with the factory speaker integration for complete factory-like navigation. The following instruction will guide you for installation of the speaker switch box and associated wirings. Please refer to the main installation guide for complete instruction.



Picture above shows the overall connections of the speaker integration system

Connections (please refer to associated labels as described below)

1. **GPS harness SPK OUT to RADIO harness AUDIO IN**
2. **RADIO harness TO AUDIO BOX plugs to AUDIO-SW BOX CAR AUDIO**
3. **AUDIO-SW-BOX AUDIO-IN to SPK SPLIT CABLE**
4. **SPK SPLIT CABLE to RADIO harness TO AUDIO SIDE and TO CAR SIDE cable respectively**
5. Connect **MUTE** wire from **RADIO** harness to **MUTE** wire from nav module power cable (installer might need to cut the pre-installed pin from wire)

# WEAK /NO GPS SIGNAL?

Tips to Improve GPS Antenna Signal if vehicle equipped Metallized Windshield\*

## “GPS MONITOR Tools”

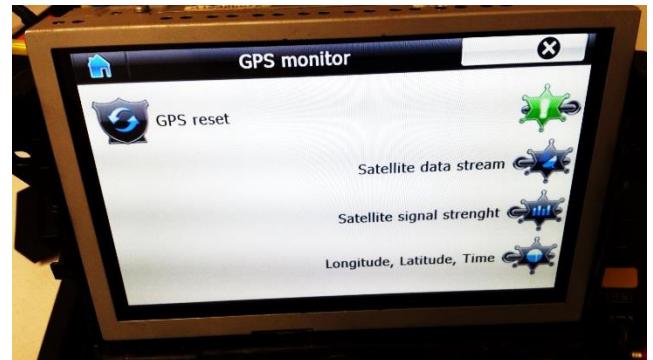
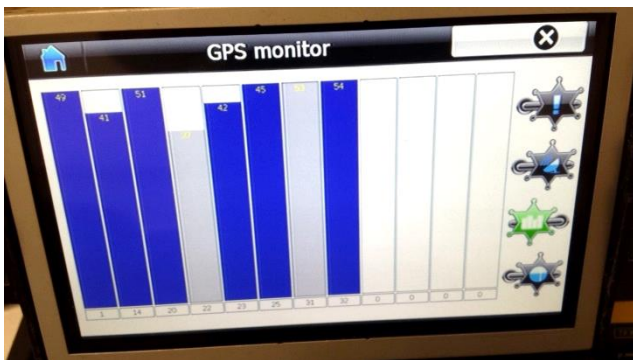
Exit IGO MAP by press SHUT DOWN BUTTON



Console> SETUP

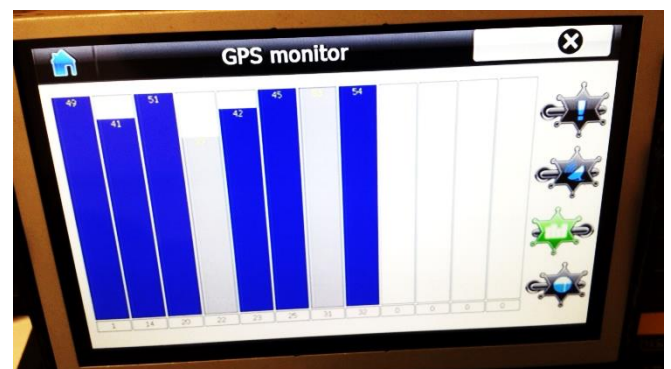


GPS MONITOR



Locate the Antenna with minimum 5 bars in dark blue or Gray bar

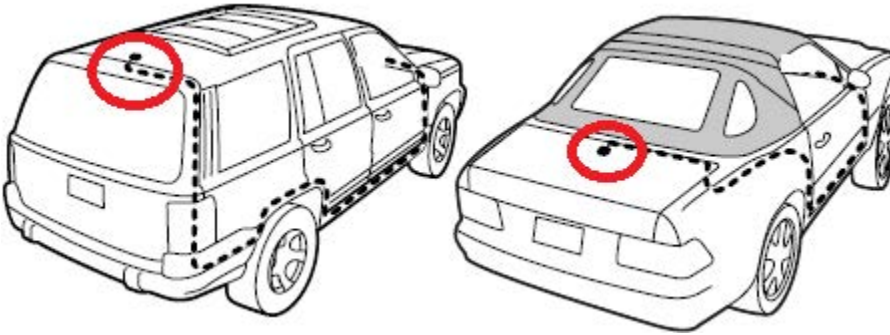
(Always suggest mounting the GPS antenna on the roof)



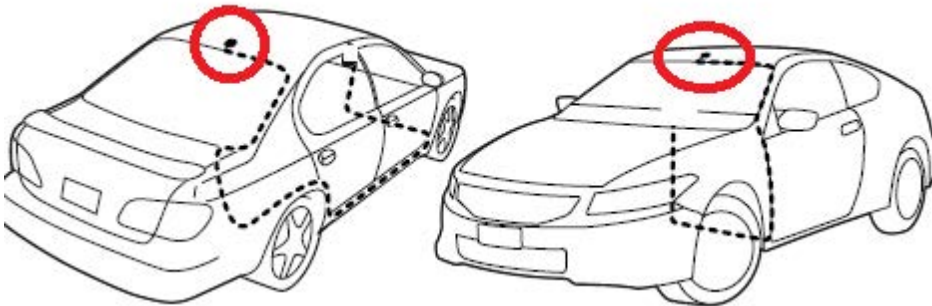
Press “!” icon to reset GPS signal and change the Antenna position

# PROPER GPS ANTENNA POSITION

if vehicle equipped \*Metallized Windshield



**SUV/Coupe**



**Sedan**



**TRUCK (Shown as Tundra)**

Alternatively, installer might choose to mount Antenna inside the headliner or inside vehicle using GPS monitor tools (see instruction). However, stay away from the windshield.

\* Windshields with metal particles can interfere with radio waves, dash-mount satellite radio receivers, and GPS receivers may be affected external transmitters and receivers may be required.



## **IGO PRIMO MAP PATH SETTING**

1. Press Setup -> Navigate Setup
2. Press on the Folder Icon
3. Select the following path in Storage Card -> cyb\_navi.exe
4. Press HOME button on the top left corner and press  
NAVIGATION
5. System should be able to run into "IGO PRIMO"