

# NAV-TV

INTERFACING THE FUTURE

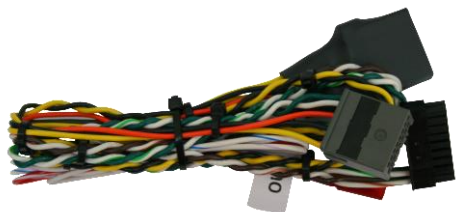
3950 NW 120<sup>th</sup> Ave, Coral Springs, FL 33065 TEL 561-955-9770 FAX 561-955-9760

## VTC-R14

Video in Motion for '13+ Range Rover  
NTV-KIT475



## Kit Content



Plug and Play T-Harness  
NTV-HAR269



VIM Module  
NTV-ASY166



USB Cable  
NTV-CAB009

## Overview

The VTC-R14 is a Plug and Play solution enabling DVD video playback in motion for select 2013+ Range Rover vehicles. No programming is necessary and all connections are made behind the factory touch screen.

## Installation

### ***Touch Screen Removal (HSE)***

1. Begin by carefully removing the touch screen dash trim panel with a plastic panel tool. It's secured with retaining clips only:



Agreement: End user agrees to use this product in compliance with all State and Federal laws. NAV-TV Corp. would not be held liable for misuse of its product. If you do not agree, please discontinue use immediately and return product to place of purchase. This product is intended for off-road use and passenger entertainment only.

2. Next remove the metal sub frame by removing (4x) Torx T20 screws on the left and right sides:



3. Remove the metal frame carefully, lifting from the driver's side first:



4. Remove the left and right touch panel button assemblies by removing (4x) additional Torx T20 screws:



Agreement: End user agrees to use this product in compliance with all State and Federal laws. NAV-TV Corp. would not be held liable for misuse of its product. If you do not agree, please discontinue use immediately and return product to place of purchase. This product is intended for off-road use and passenger entertainment only.

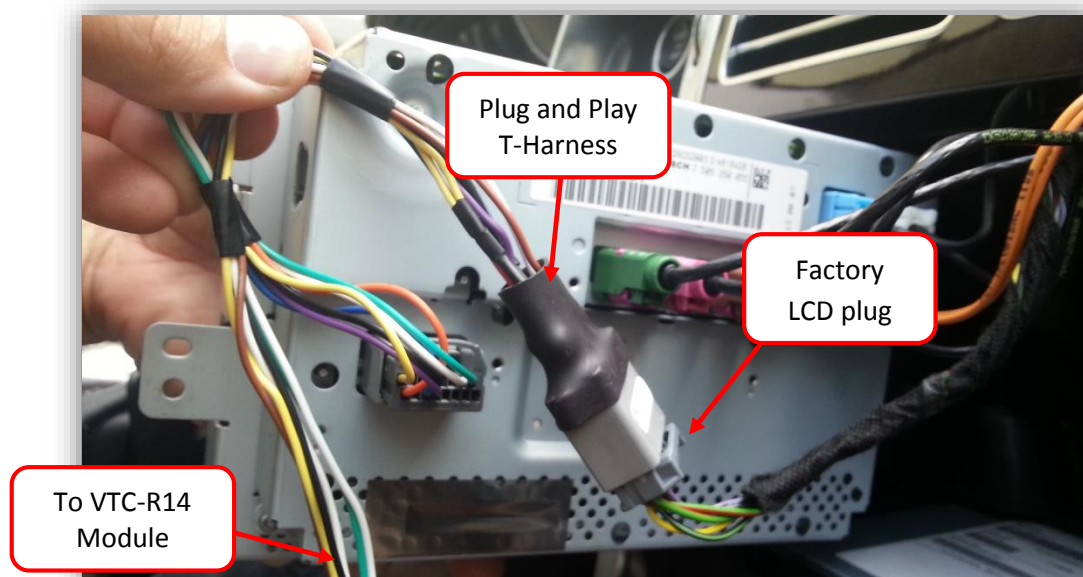


5. Remove (4x) more Torx T20 screws to access behind the factory touch screen.  
Disconnect all harnesses and set the LCD panel aside:



### ***Module Installation***

6. Gather the Plug and Play T-Harness from the VTC-R14 kit. Plug the 16-pin factory LCD power/data connector into the female end of this harness:



7. Plug the male end of the Plug and Play harness into the factory screen.
8. Plug the VTC-R14 module into the 18-pin connector located on the provided Plug and Play T-Harness. Secure the module behind the dash with a zip tie or similar method to eliminate vibration.
9. Reconnect all harnesses to the LCD panel, reinstall screen and test. Refer to 'Operation' for usage.

Agreement: End user agrees to use this product in compliance with all State and Federal laws. NAV-TV Corp. would not be held liable for misuse of its product. If you do not agree, please discontinue use immediately and return product to place of purchase. This product is intended for off-road use and passenger entertainment only.

## Operation

To enable/disable VIM (video in motion), double-press the **rear-defrost** button. VIM will be reset on every key cycle.

**\*Note:** Destination input can be achieved without VIM activation. Navigation tracking will not function properly when VIM is active.



**NAV-TV**  
INTERFACING THE FUTURE  
3950 NW 120<sup>th</sup> Ave, Coral Springs, FL 33065 TEL 561-955-9770 FAX 561-955-9760



Agreement: End user agrees to use this product in compliance with all State and Federal laws. NAV-TV Corp. would not be held liable for misuse of its product. If you do not agree, please discontinue use immediately and return product to place of purchase. This product is intended for off-road use and passenger entertainment only.