

NAV-TV

INTERFACING THE FUTURE

3950 NW 120th Ave, Coral Springs, FL 33065 TEL 561-955-9770 FAX 561-955-9760

www.nav-tv.com info@nav-tv.com

W204-N RVC

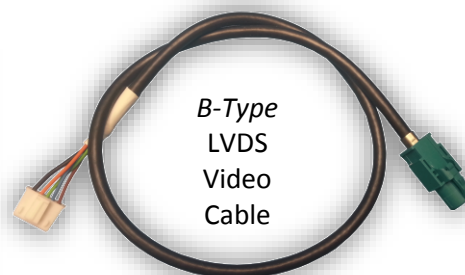
NTV-KIT704



Overview

The W204-N RVC Kit interfaces a backup camera input (with active parking lines) and an (optional) additional front camera to the factory media screen in select 2012+ Mercedes vehicles.

Kit Contents



W205-RVC Interface



IR Eye



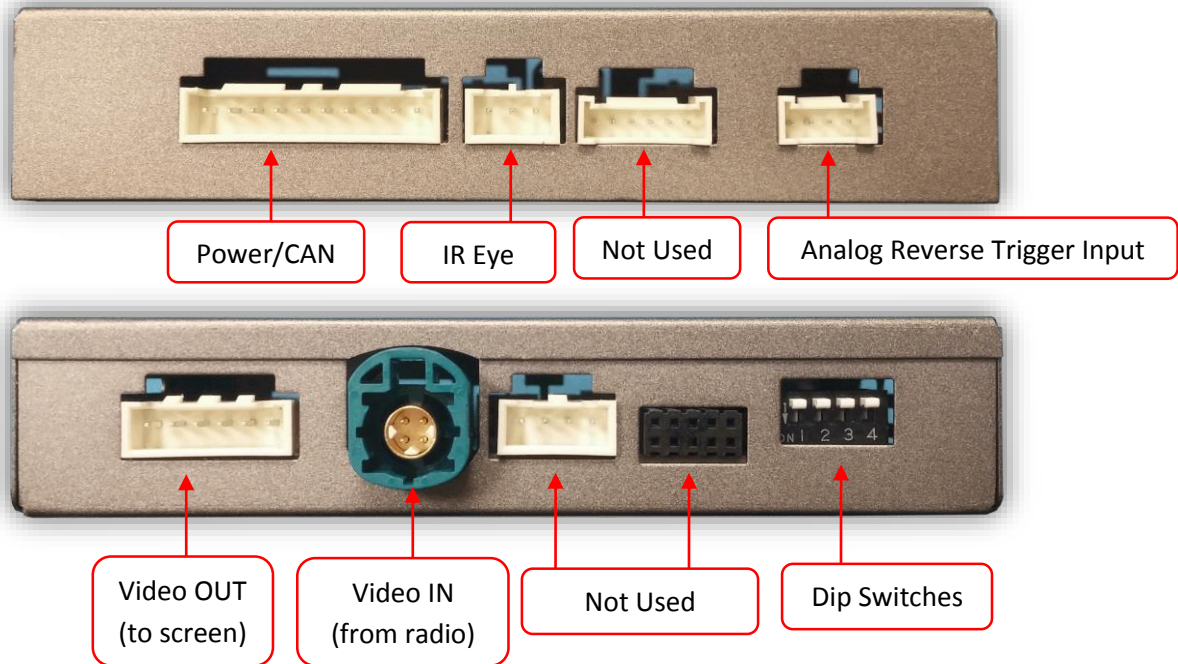
OSD Menu remote



Plug & Play Power/CAN Harness

Agreement: End user agrees to use this product in compliance with all State and Federal laws. NAV-TV Corp. would not be held liable for misuse of its product. If you do not agree, please discontinue use immediately and return product to place of purchase. This product is intended for off-road use and passenger entertainment only.

Interface Connectors



Dip Switch Settings



DIP SW	1	2	3	4
UP	VEH TYPE	VEH TYPE	HIGH RES	KEEP DOWN
DOWN	VEH TYPE	VEH TYPE	LOW RES	KEEP DOWN

***Note: Remove power to the unit prior to making adjustments to the dip switches.**



C-Class with 5.8" Screen (no NAV)



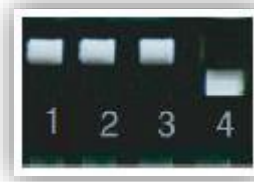
B-Class, S-Class with 7" Screen



B-Class with 5.8" Screen



C-Class with 5.8" Screen (with NAV)



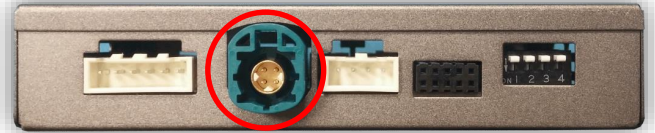
C-Class, E-Class, SLK with 7" Screen



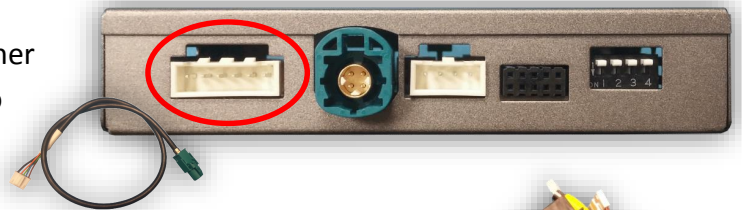
A-Class, ML, GLK, CLA with 5.8" Screen

Installation

1. Remove the radio. This may require the Mercedes hook tool for removing vents on some vehicles, others may just be clips and screws securing down dash panels. Remove all harnesses and set the radio aside.
2. Remove the factory screen. Disconnect all associated harnesses and set the screen aside.
3. Behind the screen, connect the OEM 4-pin, LVDS video cable previously removed from the factory monitor and connect it to the green port on the W204-N interface.

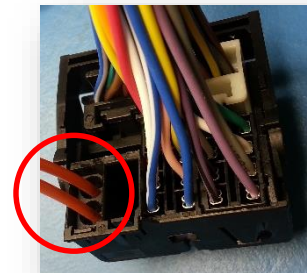


4. Connect the *provided* LVDS Video cable to the OEM monitor (green plug). Run the other (white) end of this cable down to the radio opening, to the W204-N interface here:



5. Reconnect all plugs back to the monitor and secure it back into the dash.
6. Connect the female side of the provided *Plug & Play T-Harness* to the main square plug removed previously. Make certain the lock secures the plugs together, and move any fiber-optic lines to the front (male) side of the Plug & Play T-Harness for proper pass through operation.

7. Connect the male end of the provided *Plug & Play T-Harness* to back to the radio. Reconnect all remaining plugs that were previously disconnected.



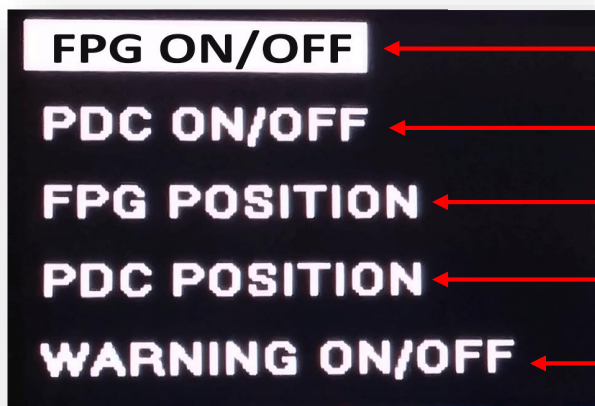
8. Connect the white, 10-pin POWER/CAN plug to the W204-N interface at the port labeled 'POWER/CAN'.
9. Install and run your reverse camera's power, ground & signal up to the radio/W204-N Interface location. Connect the signal RCA to the provided RCA end labeled 'CAMERA'.
10. Find a solid ground wire (radio's ground) and an ACC 12v (+) source to power your camera. Alternatively, you may use the provided **brown wire** (either one, cut the connector off) for **reverse 12v (+)** power only.
11. **Optional:** IF adding an additional **front camera**, connect the signal from this source to the RCA labeled 'FRONT'. See next page for activating this camera.

Menu Adjustments

Before you start:

- The IR-Eye must be connected
- Make sure the car's ignition is on and radio is on
- You must be in **Reverse Camera** mode (place vehicle in reverse)
- Repeatedly press the **MODE** button until guidelines appear on screen
- Press the **OK BUTTON** 4 times (numbers will display per press), then press **POWER**.
- The **OSD Menu** will appear on screen (auto-time out in about 5 seconds if no action occurs).

Only required if vehicle has existing OEM Rear Camera



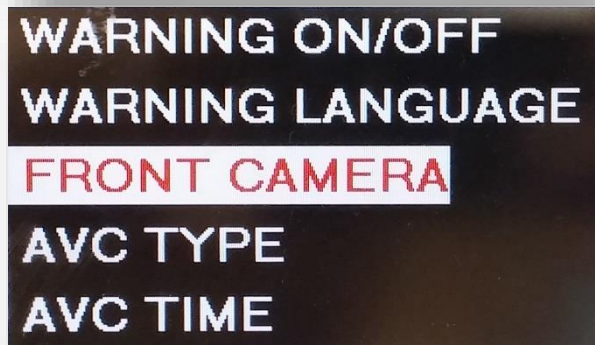
Functional Parking Guidelines ON/OFF

Not Used

Adjust FPG Position

Not Used

'Safe to move?' ON/OFF

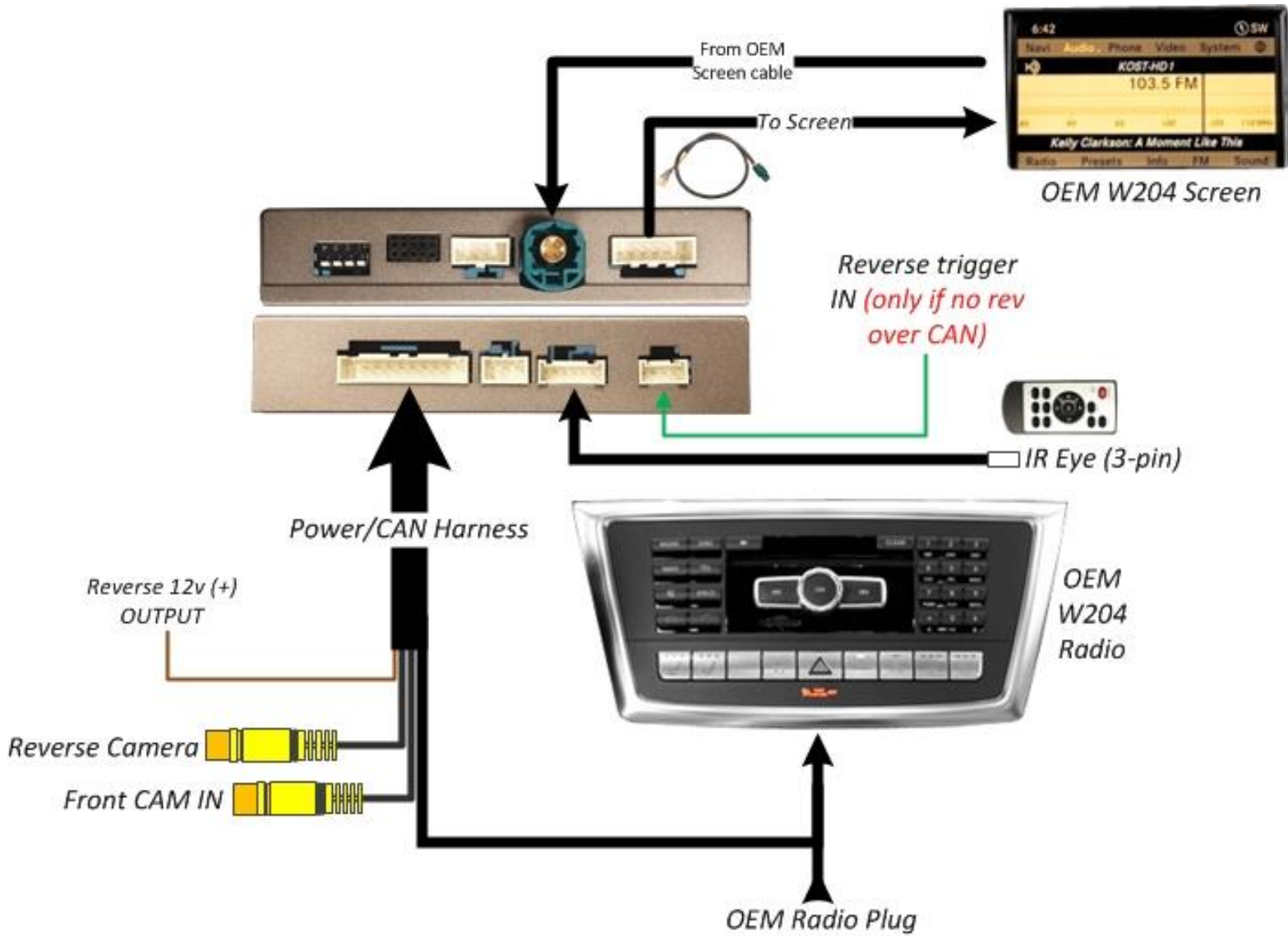


FRONT CAMERA

7 Sec

To activate **Front Camera**, scroll down using the remote arrow keys when in the menu to **FRONT CAMERA**. Once in this setting, press OK and choose (up/down) between 5, 7, 9 or 11 seconds for **auto-front switching timeout** (once the vehicle leaves reverse gear, the front camera input will stay active for pre-defined amount of time).

W204-N Install Diagram



Agreement: End user agrees to use this product in compliance with all State and Federal laws. NAV-TV Corp. would not be held liable for misuse of its product. If you do not agree, please discontinue use immediately and return product to place of purchase. This product is intended for off-road use and passenger entertainment only.

W204-N RVC Operation

- **Once the W204-N RVC is connected properly, reverse activation is automatic. Placing the vehicle in reverse will display the connected camera's image automatically.**

Note: If display doesn't switch to reverse image when shifting into reverse or screen is distorted, check dip switch settings on page 2.

Note: If all dip switch settings have been tried, connect the provided 'Reverse Trigger Input' wire (green) and supply this wire with an OEM reverse 12v (+) signal.



- Press and hold the *back arrow* on the steering wheel to switch to the connected front camera (if no change, try check Dip Switches 1 & 2 and your menu settings). Otherwise, the front camera will display (whenever you leave the *reverse gear*) for the user-set amount of time (5, 7, 9 seconds, etc).

