

NAV-TV

INTERFACING THE FUTURE

3950 NW 120th Ave, Coral Springs, FL 33065 TEL 561-955-9770 FAX 561-955-9760

www.nav-tv.com

info@nav-tv.com

BHM
05/15/17
NTV-DOC245

W205-N RVC

NTV-KIT703



Overview

The W205-N RVC Kit interfaces a backup camera input (with active parking lines) and 1 front camera to the factory media screen in select 2015 Mercedes vehicles with the *new* infotainment system.

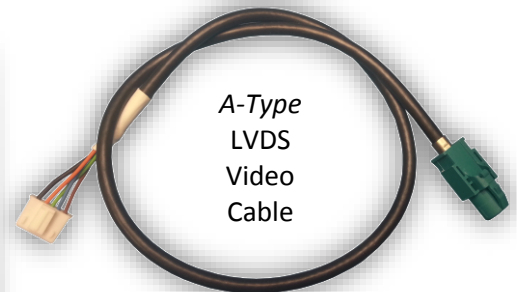
Kit Contents



OSD Menu remote



W205-N RVC Interface



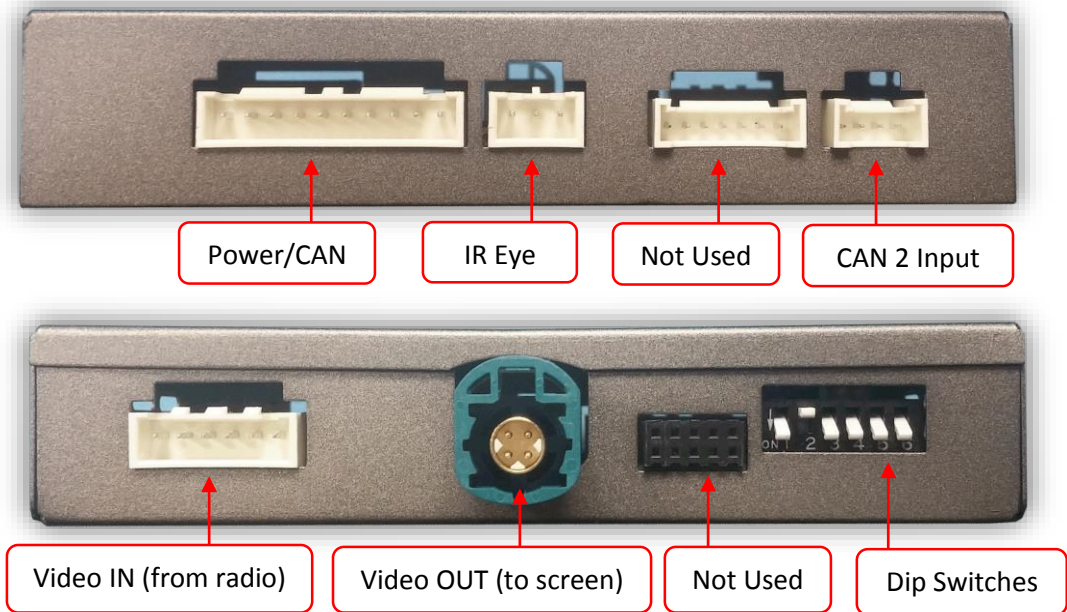
IR Eye



Plug & Play Power/CAN Harness

Agreement: End user agrees to use this product in compliance with all State and Federal laws. NAV-TV Corp. would not be held liable for misuse of its product. If you do not agree, please discontinue use immediately and return product to place of purchase. This product is intended for off-road use and passenger entertainment only.

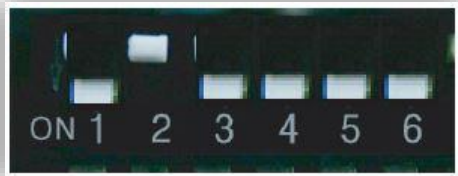
Interface Connectors



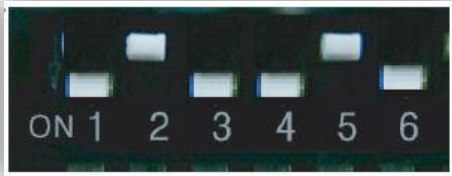
Dip Switch Settings



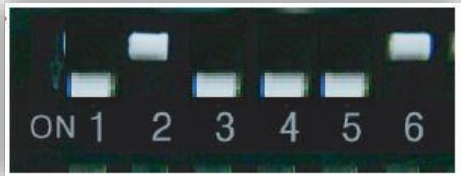
DIP SW	1	2	3	4	5	6
UP	KEEP DOWN	KEEP UP	OEM CAM	NOT C-Class	High RES	VEH TYPE
DOWN	KEEP DOWN	KEEP UP	Adding CAM	C-Class ONLY	Low RES	VEH TYPE



C-Class with 7" Screen



C-Class with 8.4" Screen



2015 CLS, CLA, B & E-Class

***Note: Remove power to the unit prior to making adjustments to the dip switches.**

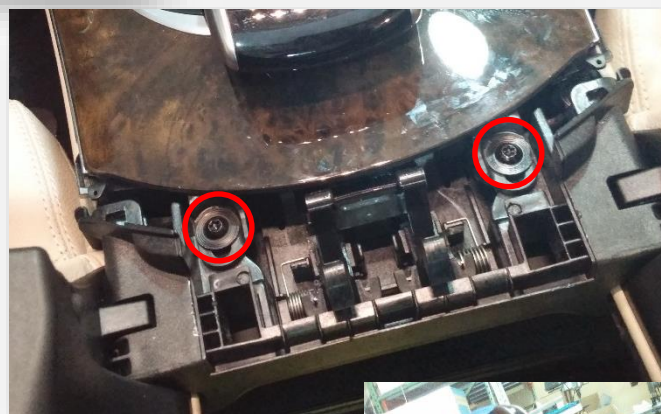
Agreement: End user agrees to use this product in compliance with all State and Federal laws. NAV-TV Corp. would not be held liable for misuse of its product. If you do not agree, please discontinue use immediately and return product to place of purchase. This product is intended for off-road use and passenger entertainment only.

Dash Removal ('15 C-Class)

1. Use a plastic tool to remove the silver trim behind the COMAND touchpad controller. You will have to open the center console and press the arm rest locks forwards for clearance:



2. Remove (2x) Torx 20 screws hidden beneath the silver trim piece in step 1:



3. Lift up the entire dash panel to just beneath the screen and disconnect all (6) plugs. Set the dash panel aside in a safe place.
4. Unscrew (2x) Torx 20 screws securing the radio to the sub dash. These screws are not designed to be removed from the radio clamps.

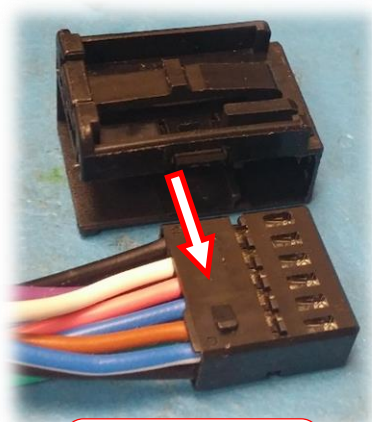
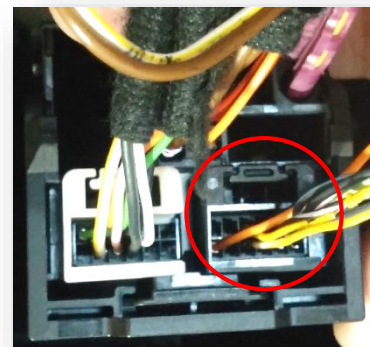


5. Remove the radio by pulling it towards you.



Installation

1. With the radio removed, disconnect all harnesses and set the radio aside.
2. In the main square radio plug, locate the 12-pin black plug and remove it (press clip on top and pull).
3. Separate the outer shell from this OEM connector and insert the provided 12-pin plug in its place (this connector only connects properly in one direction).



OEM 12-pin
& outer shell



OEM 12-PIN Harness



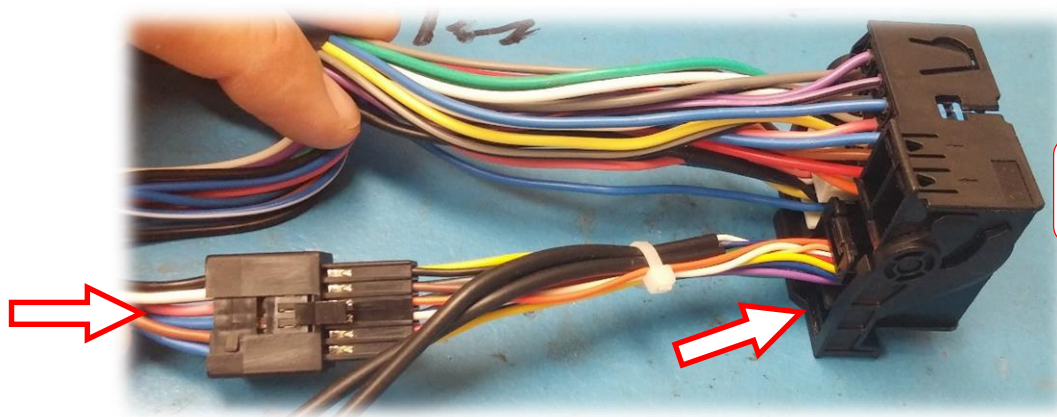
Provided 12-PIN plug & play



OEM 12-pin
outer shell

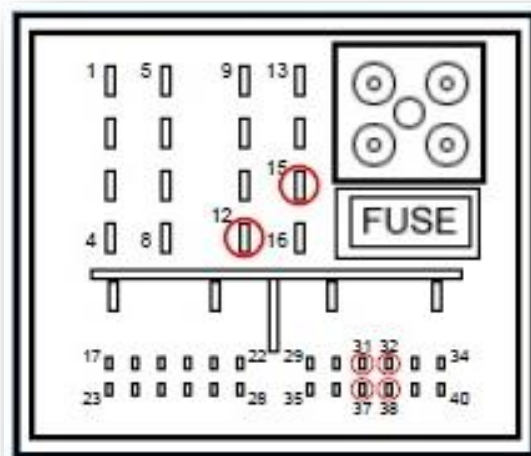
NOTE: if you
insert this
connector upside
down, picture
will not display
at the monitor.

4. Connect the OEM 12-pin to the female end of the plug & play portion of the harness from step 3. Connect the new harness assembly back into the Main OEM Radio connector like shown.



Main OEM
Radio Connector

5. Locate the **black** and **red** wires labeled (GND) and (ACC) and solder these wires to the **ground wire (PIN 12)** and **constant 12v power wire (PIN 15)** on the same quad-lock connector (from step 4):



6. Locate the OEM, typically **Dark Blue**, 4-pin round connector (LVDS) that was removed from the radio in step 1 from the port on the radio labeled '**DISP**'. Connect this factory plug to the W204-H interface at the port labeled '**VIDEO OUT**'.



NOTE: If there is no dark blue LVDS video plug present, use the cable that makes the OEM screen disappear when unplugged (while radio is on).

7. Connect the white plug side of the provided **LVDS Video Cable** to the port on the W204-H interface labeled '**VIDEO-IN**'.



8. Connect the free end (aqua) of the provided **LVDS Video Cable** back to the factory radio at the '**DISP**' (dark blue) port.



9. Connect the small white 4-pin plug labeled 'CAN2' to the plug on the W205-N interface labeled 'CAN2' for proper operation.

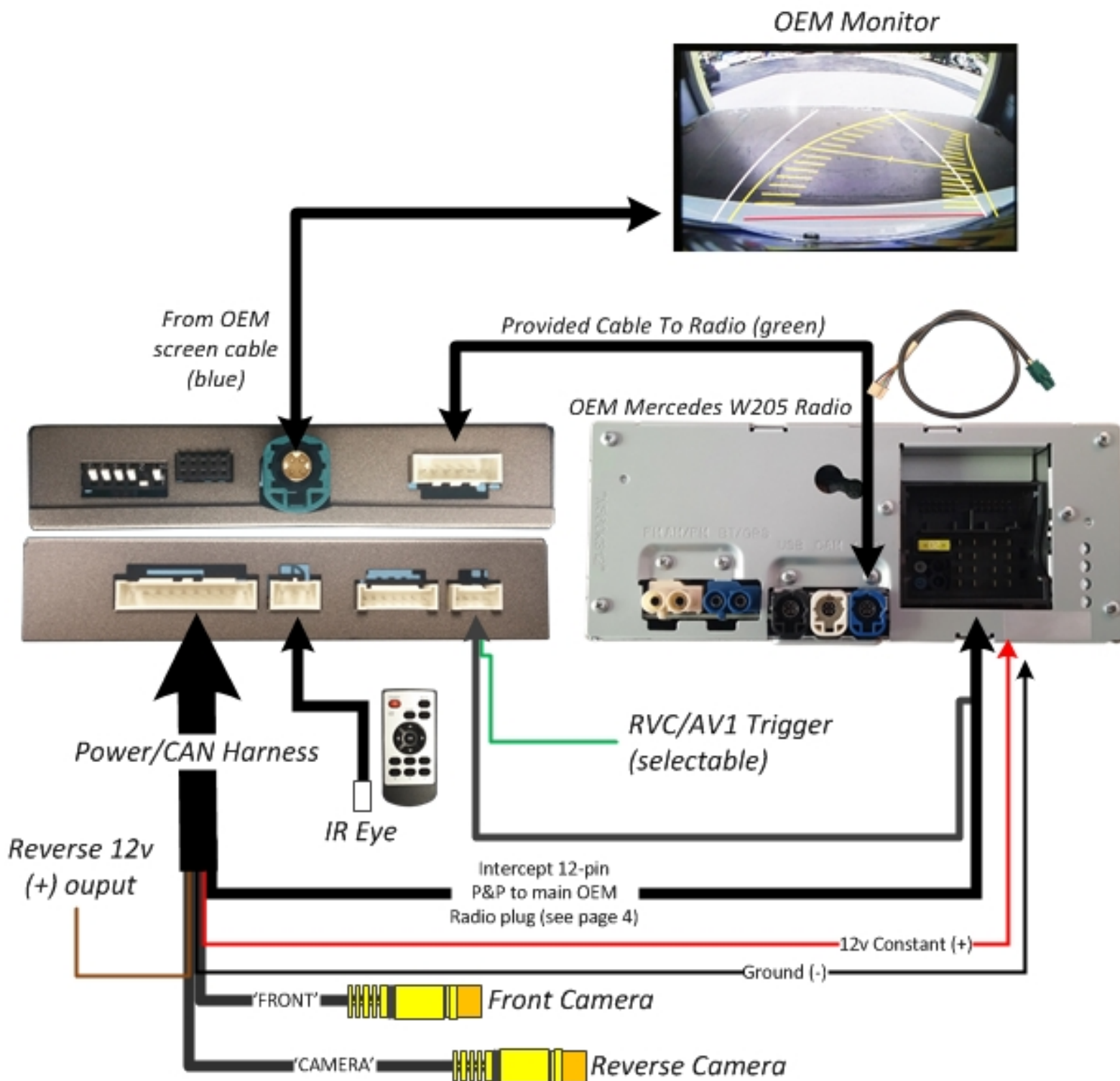


10. Power your reverse camera with an accessory 12v source, or use the **brown wire** for **reverse 12v only**. Splice ground (-) to the black wire provided to the interface, or find another ground point/wire in the car.
11. Connect signal from the rear camera to the RCA labeled 'CAMERA' among the main Power/CAN harness.
12. Connect the white plug from the Power/CAN Harness to the port on the W204-H interface labeled 'POWER/CAN'.
13. **Optional:** If adding an additional video input (including front camera), use the provided RCA labeled 'FRONT' for signal input. This video source *must* be powered with an ACC source. *NOTE: If the user desires for automatic front camera-switching, this option must be set upon installation. See MENU Settings on page 7.*
14. Start the car and test for proper functionality before replacing any dash pieces.

NOTE: *If after verifying DIP Switches and you still don't get reverse activation (screen switching to cam-image while in reverse), re-test with ALL dash-board pieces connected properly.*

NOTE: *If the above was tried and you still are not getting anything on screen, providing the **green wire** among the **CAN 2 Harness** with a (+) reverse signal will switch the screen manually.*

W205-N RVC Install Diagram



Agreement: End user agrees to use this product in compliance with all State and Federal laws. NAV-TV Corp. would not be held liable for misuse of its product. If you do not agree, please discontinue use immediately and return product to place of purchase. This product is intended for off-road use and passenger entertainment only.

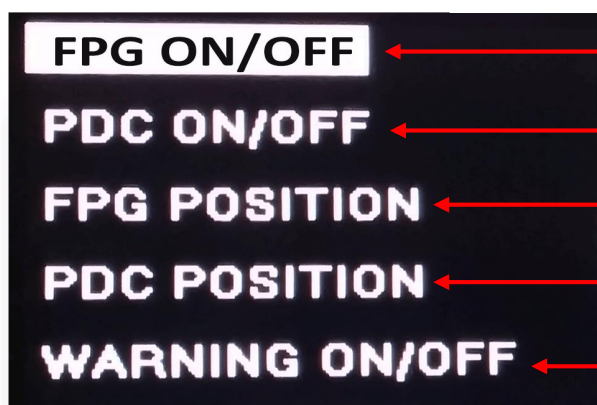
Menu Adjustments

Before you start:



NOTE- step 4 only required if C-Class, & OEM reverse camera exists

- 1 The IR-Eye must be connected
- 2 Make sure the car's ignition is on and radio is on
- 3 You must be in **Reverse Camera** mode (place vehicle in reverse)
- 4 Repeatedly press the **MODE** button until guidelines appear on screen
- 5 Now press the **OK** button **4 times**, then press **Power**
- 6 The **OSD Menu** will appear on screen (auto-time out in about 5 seconds if no action occurs).



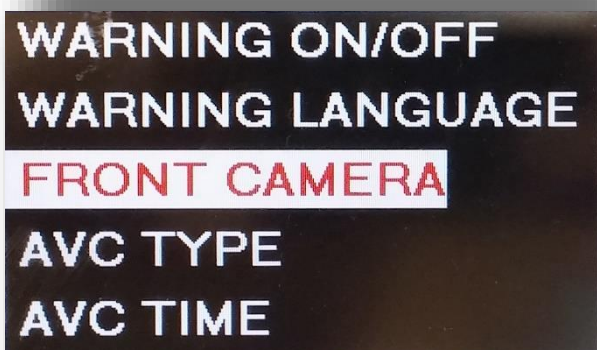
Functional Parking Guidelines ON/OFF

Not Used

Adjust FPG Position

Not Used

'Safe to move?' ON/OFF

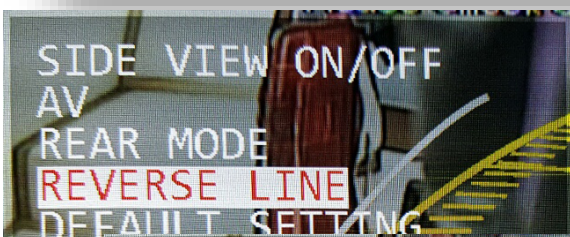


FRONT CAMERA

7 Sec



To set **Front Camera timer**, scroll down using the remote arrow keys when in the menu to **FRONT CAMERA**. Once in this setting, press OK and choose (up/down) between 5, 7, 9 or 11 seconds for **auto-front switching timeout** (once the vehicle leaves reverse gear, the front camera input will stay active for pre-defined amount of time).



REVERSE LINE
TO REAR PORT

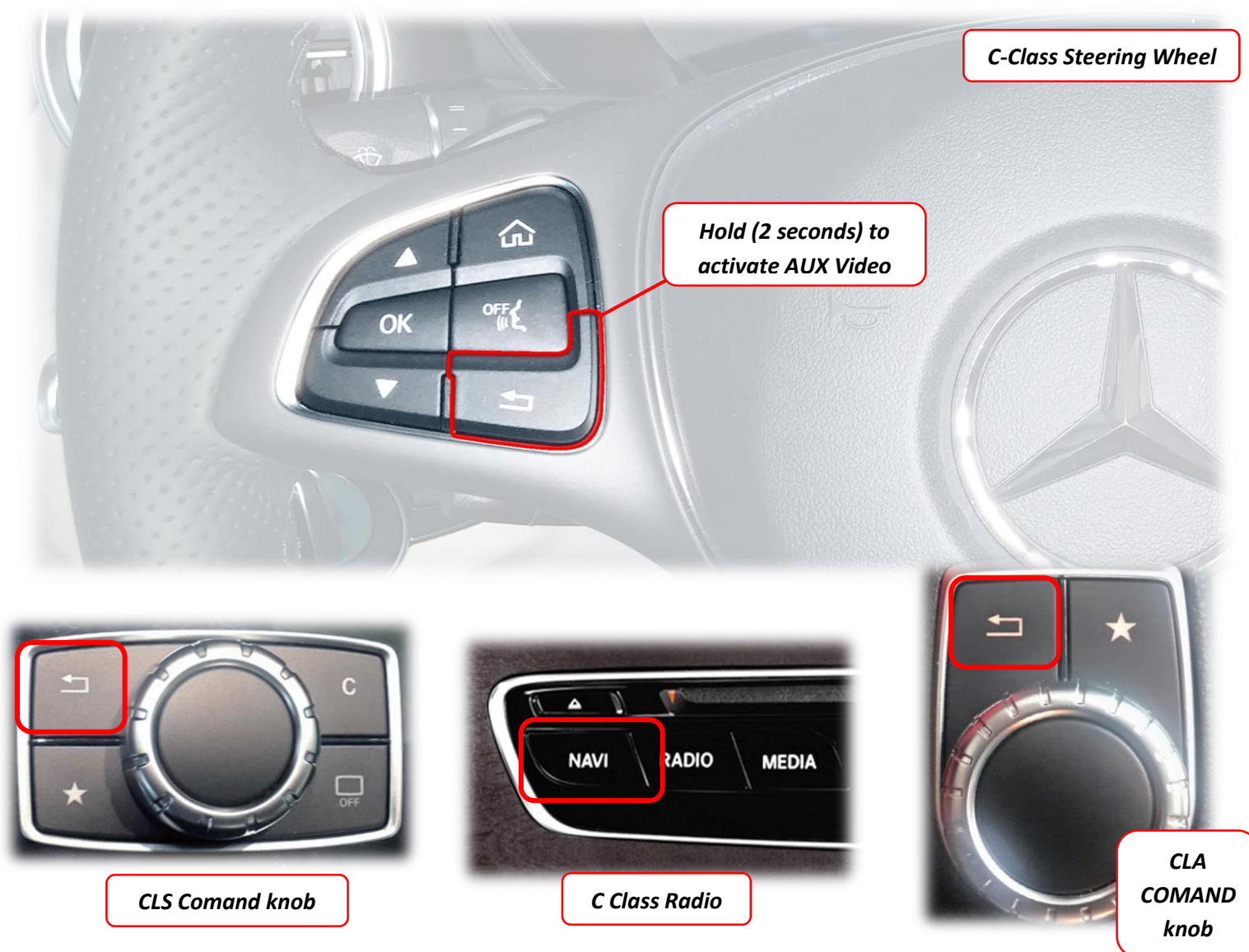
To set custom **green wire trigger**, find 'REVERSE LINE' option and set to 'REAR PORT' or 'AV1' depending upon your preference. Every time the green wire receives 12v (+), the selected RCA port will display on screen.

W205-N RVC Operation

- **Once the W205-N RVC is connected properly, reverse activation is automatic. Placing the vehicle in reverse will display the connected camera's image automatically.**

Note: If display doesn't switch to reverse image when shifting into reverse, check dip switch settings on page 2.

- **For forcing the Front Camera at any time, press the clear button OR the NAVI button on the radio. On some vehicles, this is located on the steering wheel, others this is located near the COMAND knob. Otherwise, the front camera will display for as long as the setting was programmed (5,7,9 seconds, etc) once you leave Reverse gear.**



Agreement: End user agrees to use this product in compliance with all State and Federal laws. NAV-TV Corp. would not be held liable for misuse of its product. If you do not agree, please discontinue use immediately and return product to place of purchase. This product is intended for off-road use and passenger entertainment only.