

# NAV-TV

INTERFACING THE FUTURE

3950 NW 120<sup>th</sup> Ave, Coral Springs, FL 33065 TEL 561-955-9770 FAX 561-955-9760

## NNG-Honda 3

Navigation interface for New Honda Accord/Odyssey

*NTV-KIT555/584*



NTV-DOC225

## Honda Accord 2013-2015 / Odyssey 2014-2015 Installation

**NOTE: vehicles with dual OEM-equipped screens are not compatible with this kit. Vehicle must have a single (1) screen only.**

**WARRANTY DISCLAIMER NOTICE!** Radio removal, disassembly, installation of Navigation Electronics, and Radio re-assembly / re-installation is the responsibility of the installer. It is recommended that you contact a professional installer that is experienced with proper work methods involving electronics and knowledgeable of specific procedures for radio disassembly, Navigation Electronics installation, and re-assembly / re-installation of the Radio Head Unit in the vehicle. **INSTALLATION DAMAGE TO THE VEHICLE RADIO HEAD UNIT IS EXPRESSLY NOT COVERED UNDER THE PRODUCT WARRANTY.**

To avoid dangerous distractions that may lead to an accident, the driver should never operate the system while the vehicle is in motion. Before installing the product, the seller should inform the end-user of proper use and compliance with the proper instructions and all states and federal laws.

Before beginning your installation, familiarize yourself with the installation instructions and the Navigation system components.

**CAUTION:** It is advisable to disconnect the negative battery cable for 3 minutes before beginning installation, to avoid unintended air bag deployment. Note and record any anti-theft radio codes prior to disconnecting.

### Honda Navigation Add-on System General Note

1. This is a newer version (HONDA 3) for Accord and Odyssey, please check with application list for confirmed vehicle before any work.
2. Touch panel part numbers:
 

Accord 2013-2015	#TSACC919
Odyssey 2014-2015	#TSODY951
3. Only one (1) video connection to the side of the factory LCD screen.  
**DO NOT BE CONFUSED WITH THE PREVIOUS VERSION.**  
Power connector is connected to Radio 20-pins plug.
4. There are OPTIONAL camera input and camera power for aftermarket camera.
5. Reverse trigger wire is NOT USED for this kit.
6. AD-Key and 3.5mm Audio Out wires are NOT USED.
7. **Honda factory display screen is NOT A TOUCH SCREEN. Installer needs to remove the factory clear panel for completing the installation.**

**Honda Accord 2013-2015 / Odyssey 2014-2015 Installation**

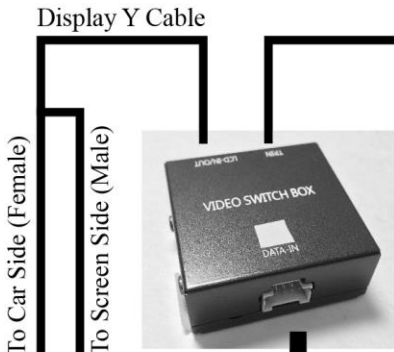
Review the overall wire connections in the figure above

**HONDA-3 Component list**

1. GPS Module
2. Main Harness – HONDA3-20PIN \*\*
3. Touch Panel with TP-IN – *see touch panel part number for accord / odyssey*
4. Display Y Cable – GVIF-03
5. Audio Switch Box
6. Video Switch Box
7. LCD Cable
8. GPS Antenna
9. Lane Departure Warning Module (optional)

\*\* Please see the connection diagram in next page for extra NOT USED wires \*\*

# Honda Accord 2013-2015 / Odyssey 2014-2015 Installation



Touch Panel  
 Accord - #TSACC919  
 Odyssey - #TSODY951



LCD Cable



GPS Antenna

no connection

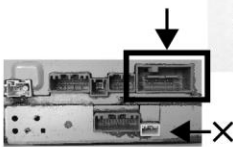
AD Key - connect to one side of push button, other side of push button to ground (optional)

Audio Out (not used)

To Audio SW Box



To Audio SW Box



Radio T-harness  
 (To Radio 20-pin main harness)

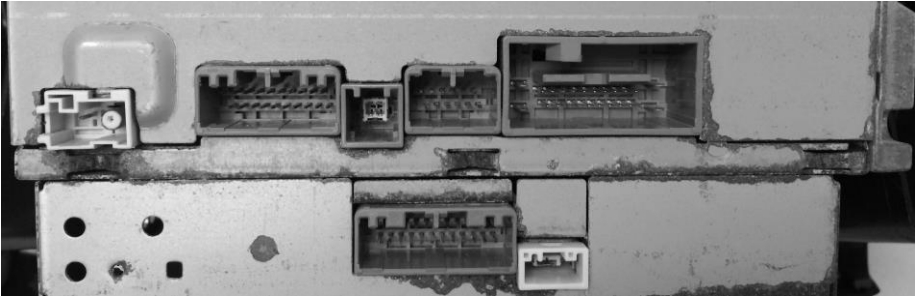
Main Power Harness

Reverse Trigger or - (not used)

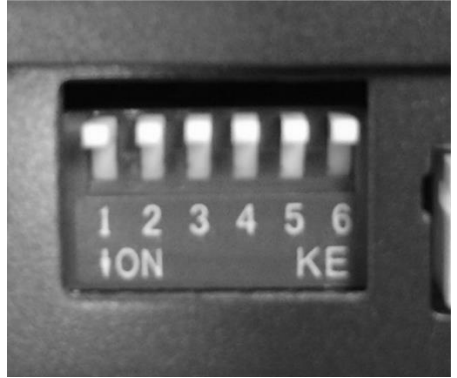
Camera power (red - optional)

Camera Input (yel RCA - optional)

## Honda Accord 2013-2015 / Odyssey 2014-2015 Installation



Connect HONDA3-20PIN main T-harness to radio (DO NOT CONNECT DISPLAY Y CABLE HERE)



Connect Display Y Cable at the side of screen See instruction below for dip switch settings

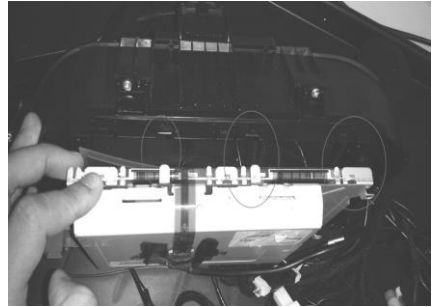
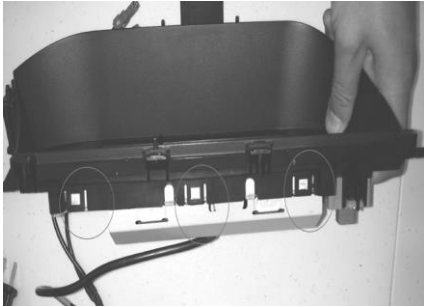
### DIP Switch Settings

1. DIP switches 1 – 6 are OFF by default
2. Turn DIP switch 5 to ON if the vehicle has NO side camera (Lane Watch Camera)
3. Turn DIP switch 6 to ON while system is power on for touch screen calibration

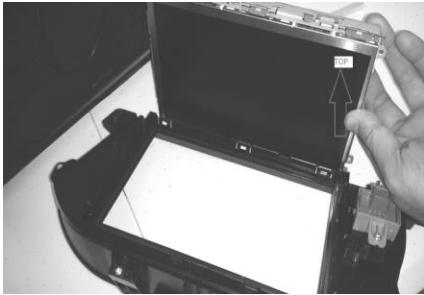
## Honda Accord 2013-2015 / Odyssey 2014-2015 Installation

### Accord Touch Panel Installation (\*beware of the differences from Odyssey)

Remove factory clear lens FIRST, do not reinstall!



Lift clips on top and bottom of the screen housing to remove display screen



Align the supplied touch panel to the top of screen as indicated

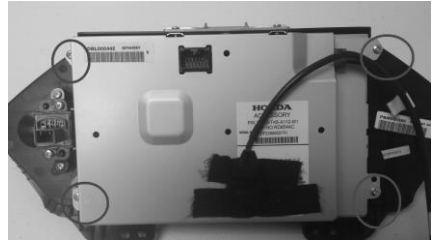


Notice the touch panel ribbon cable for Accord is at the TOP of screen.  
Using the screen housing to secure the panel (Do not use adhesive tape or glue)

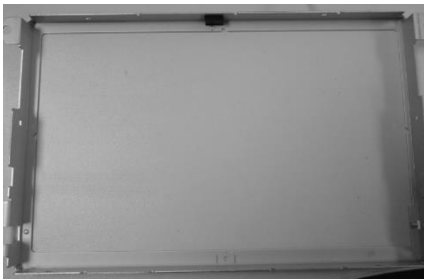
# Honda Accord 2013-2015 / Odyssey 2014-2015 Installation

## Odyssey Touch Panel Installation (\*beware of the differences from Accord)

Remove factory clear lens FIRST, do not reinstall!



Remove screws from top (2) and behind (4) the display screen to remove screen housing



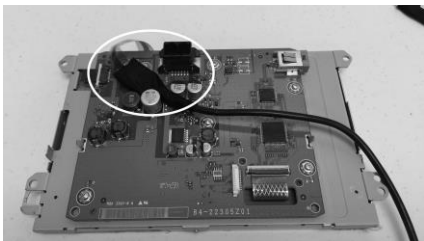
Remove the frame from screen

Place touch panel as indicated



Orient the touch panel as indicated

Reinstall the frame and center the panel



Route cable as shown between components

Secure the cable at the back of display screen

# Honda Accord 2013-2015 / Odyssey 2014-2015 Installation

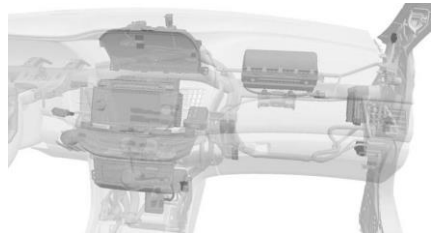
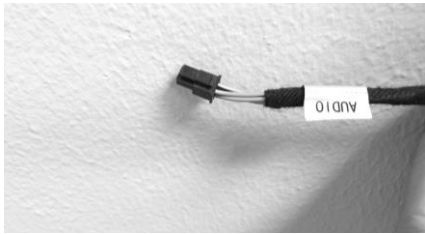
## GPS Audio Integration for Factory Equipped External Amp

By default, this system is wired for factory radio with internal amp (non-touch screen radio). If you are installing this system to premium sound radio with touch screen, you will have to do the following modification to the wiring in order to avoid “pop” and overly amplified GPS audio.

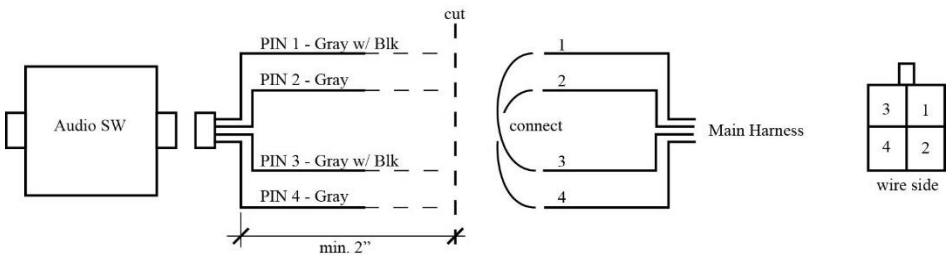
1. Located the factory external amp  
 For Accord and Odyssey, the external amp is normally located at the upper side of the PASSENGER kick panel

For Accord Hybrid, the external amp is normally located at the upper side of the DRIVER kick panel behind the fuse box

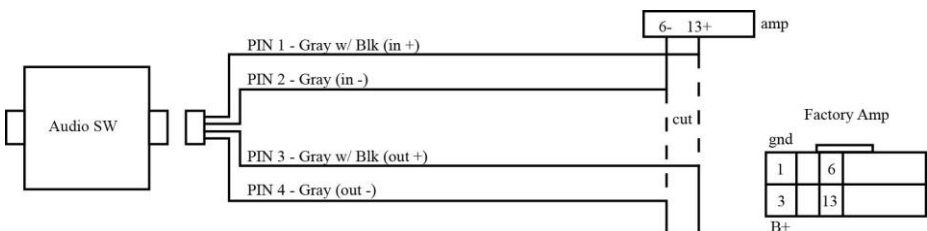
2. Cut the 4-pin wire from main harness and leave about minimum 2” wires for future connections



3. Connect wires as indicated below. Connect the plug with open wires to the Audio Switch Box
4. Locate the stereo amp connector (18-pin), cut PIN 6 (pink) and PIN 13 (light green) wires with minimum 2” from the plug



5. Connect wires as indicated below





**Honda Accord 2013-2015 / Odyssey 2014-2015 Installation****Honda3 (Lane Watch Camera / Back Up Camera)  
Supplemental Installation Manual**

**This manual will provide instruction on how to wire the LDW (Lane Watch Camera) and Back Up Camera for HONDA\_3 Navigation System**

**Vehicle Application:**

<b>2014 - 2015</b>	<b>Honda Odyssey</b>
<b>2014 - 2015</b>	<b>Honda Crosstour</b>

Vehicle with *Back Up Camera ONLY*

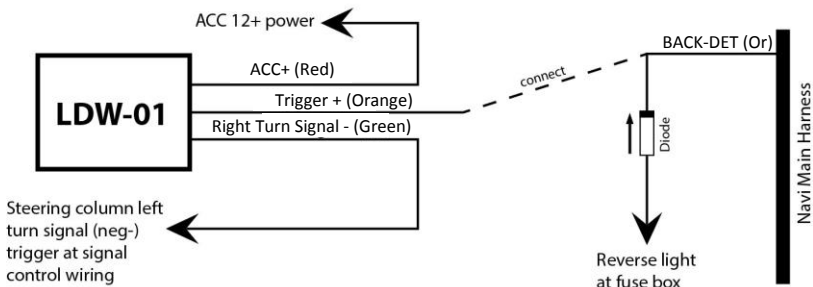
1. Connect Reverse Trigger wire (Or) to vehicle reverse light at fuse box

Vehicle with *Back Up Camera AND LDW*

1. Use LDW-01 relay
2. Connect black wire to ACC 12+ power source
3. Connect red wire to Reverse Trigger wire 'BACK-DET' (Or)
4. Connect combined Reverse Trigger wire with diode to reverse light at fuse box
5. Connect green wire to steering column **Right** Turn Signal *negative* trigger

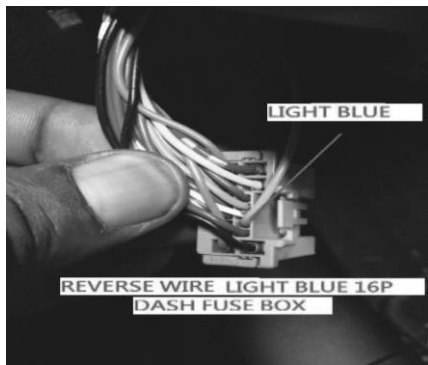
**Caution:**

Please refer to diagram below. Fail to follow the instruction might damage the navigation system and car electrical system. Always test before making final connection.

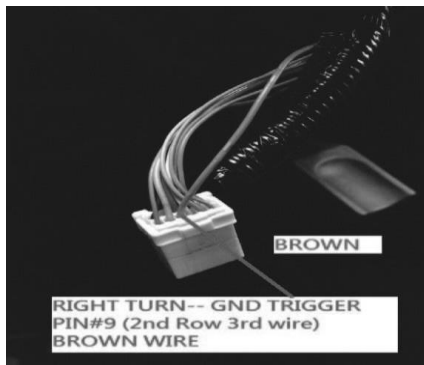


## Honda Accord 2013-2015 / Odyssey 2014-2015 Installation

### Honda Crosstour LDW and Reverse wires

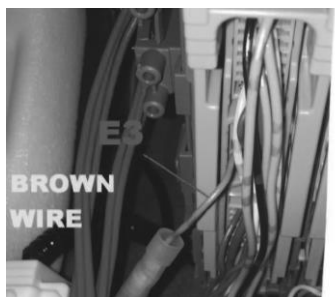


CROSSTOUR reverse wire at dash fuse box



CROSSTOUR right turn wire in steering column

### Honda Odyssey LDW and Reverse wires



ODYSSEY reverse wire at dash fuse box



ODYSSEY right turn wire in steering column

## **Honda Accord 2013-2015 / Odyssey 2014-2015 Installation**

### **Trouble Shooting**

Please follow all the steps in this installation manual, failure to do so might void the product warranty and damage the factory radio

#### **Power**

Navigation system should have (2) led lights on the module box for indication of power and data connections.

#### **Display**

##### **No Display**

1. There are two led lights at the GPS module to indicate data and power. If led lights are OFF and radio is ON, check the power fuse inside the black box from the main harness
2. Check all wiring connectors for any loose connection
3. Check all wiring shielding for any damage during the installation process
4. Check all wiring for any type of damage
5. Check display Y cables for loose, misalignment, or damage

##### **No Touch Response**

1. Check NAV mode ONLY for touch responses
2. Check led lights for power and data indications
3. Check Display Switch Box connections for any loose connection, or damage

##### **No GPS software loaded, touch screen alignment screen occurred**

1. Check map SD card at GPS module, see any sign of missing, loose, pop-out, misalignment, or damage
2. Turn on DIP switch 6 to activate touch panel calibration and check for improvement

#### **Sound**

1. Check all cable for connections to Audio Box for loose, or damage
2. Check software volume settings, ensure volume is not muted
3. Check connections at radio for loose, damaged wires