

NAV-TV

INTERFACING THE FUTURE

3950 NW 120th St. Coral Springs, FL 33065 TEL 561-955-9770 FAX 561-955-9760

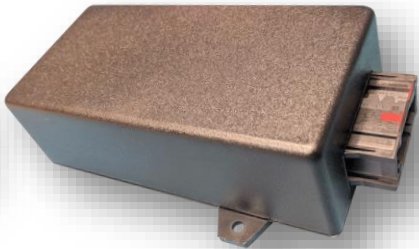
www.nav-tv.com info@nav-tv.com

TOOKI-Bentley

NTV-KIT560



BENTLEY



Overview

The TOOKI-Bentley by NAV-TV replaces the factory-equipped telephone module for select Bentley vehicles for hands-free telephone operation. Music streaming is not supported with this module. All functionality remains the same from the Telephone screen on the OEM radio, including contacts memory and steering wheel controls.

Kit Content Compatibility



TOOKI-Bentley Module
NTV-ASY216

- '04-'08 Bentley Continental
- '04-'08 GT, GTC
- '04-'08 Flying Spur

TOOKI-Bentley Installation

Continental GT/GTC, Flying Spur (non-convertible):

1. With the vehicle off and key out of the ignition, open the trunk.
2. Remove any screws to drop shelf located in trunk (up high) to access the vehicle electronics.
3. Locate the factory telephone module, disconnect the 18-pin harness. *
4. Connect the TOOKI-Bentley to the same 18-pin harness and secure the module down with Velcro or similar method.

OEM Telephone module



**NOTE: for convertible vehicles, the factory telephone module is located behind the rear seat (vertical).*

TOOKI-Bentley Operation

*The TOOKI-Bentley was designed to integrate seamlessly into the factory radio system. The only additional step after installation is to start the vehicle and **pair** the cell phone to the TOOKI module (one time). After this, as long as Bluetooth is enabled on the handset, it will auto pair to the Bentley vehicle (once turned on) for full handsfree (telephony) access.*

NOTE: the TOOKI-Bentley does not support music streaming.

*To access all features, press the **phone button** on the radio fascia. The TOOKI-Bentley can store up to 5 phones at a time. Once a sixth phone is paired, the oldest paired device is deleted from memory.*

NAV-TV

INTERFACING THE FUTURE

