

# NAV-TV

INTERFACING THE FUTURE

BHM  
01/04/19  
NTV-DOC336

3950 NW 120<sup>th</sup> Ave, Coral Springs, FL 33065 TEL 561-955-9770 FAX 561-955-9760  
[www.nav-tv.com](http://www.nav-tv.com) [info@nav-tv.com](mailto:info@nav-tv.com)

## RGB-BNTv2

NTV-KIT903



### Overview

The RGB-BNTv2 adds an aftermarket backup camera to the factory navigation screen in select Bentley vehicles. A secondary video input is included on the RGB module and can be viewed at any time by supplying power to an input wire (optional).

### Kit Content

RGB Power Harness  
NTV-HAR324



Remote Control  
NTV-REM004



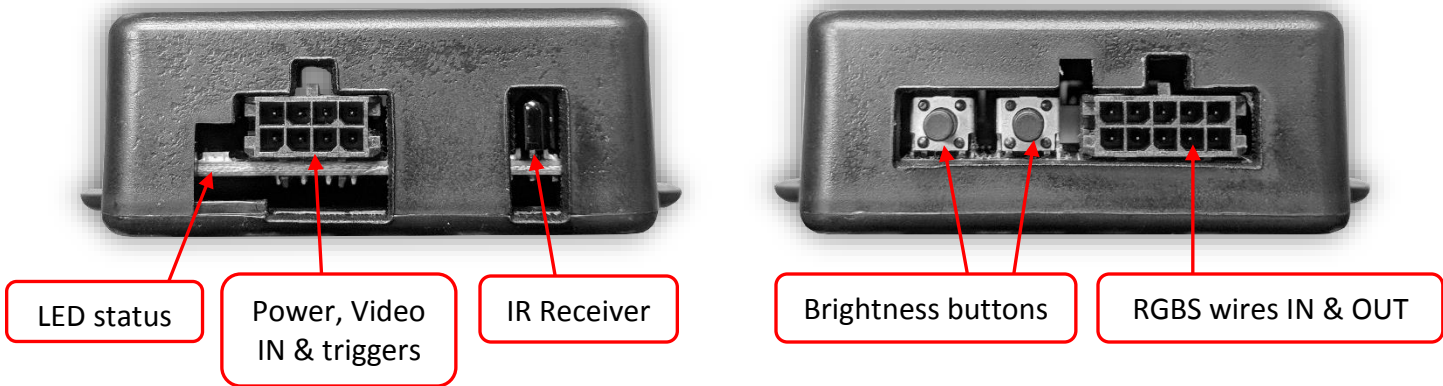
RGB Converter  
NTV-ASY254



RGB Video  
Harness  
NTV-HAR331



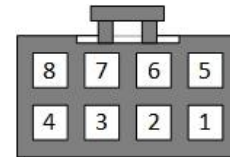
RGB-BNTv2 Interface Connectors



RGB-BNTv2 Pin Out

| PIN # | Description          | Color      |
|-------|----------------------|------------|
| 1     | Ground (-)           | Black      |
| 2     | INPUT 2 (AUX VIDEO)  | White/Blue |
| 3     | Shield (VIDEO 2)     | Black      |
| 4     | Signal (VIDEO 2)     | Yellow     |
| 5     | 12v (+) ACC IN       | Red        |
| 6     | INTPUT 1 (CAM VIDEO) | White/Red  |
| 7     | Shield (VIDEO 1)     | Black      |
| 8     | Signal (VIDEO 1)     | Yellow     |

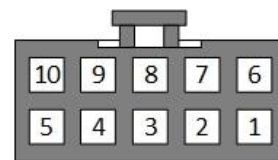
**Power Harness**



Wire Side

| PIN # | Description              | Color        |
|-------|--------------------------|--------------|
| 1     | RGB Ground               | Black/Shield |
| 2     | SYNC (screen)            | Gray         |
| 3     | Blue Signal (screen)     | Blue         |
| 4     | Red Signal (screen)      | Red          |
| 5     | Green Signal (screen)    | Green        |
| 6     | RGB Ground               | Shield       |
| 7     | SYNC (radio/NAV)         | Brown        |
| 8     | Blue Signal (radio/NAV)  | Purple       |
| 9     | Red Signal (radio/NAV)   | Orange       |
| 10    | Green Signal (radio/NAV) | Yellow       |

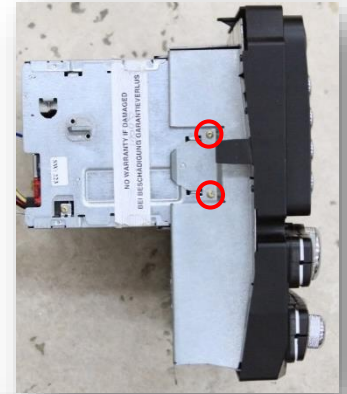
**RGB Video Harness**



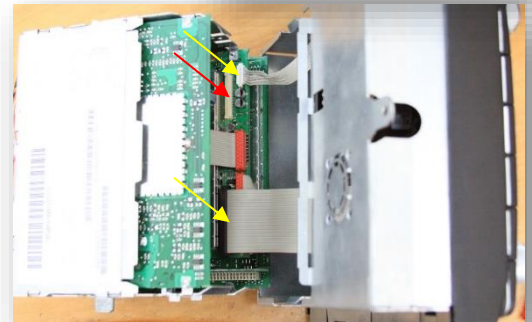
Wire Side

## RGB-BNTv2 Ribbon Installation

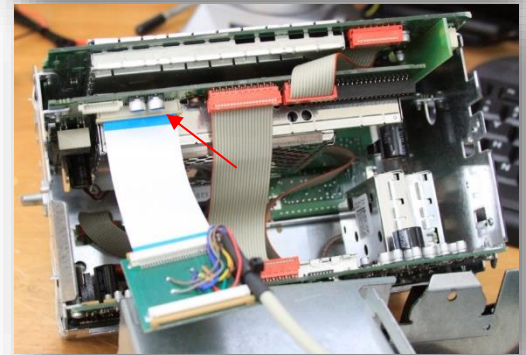
1. Remove the factory radio: remove the trim surrounding the radio, then remove 5 screws that secure the radio into the dashboard. Pull the radio from the dash, disconnect all connected harness and bring it to a clean bench with a soft surface.
2. Separate the front half of the radio from the back half by removing 2 torx screws from each side of the radio.



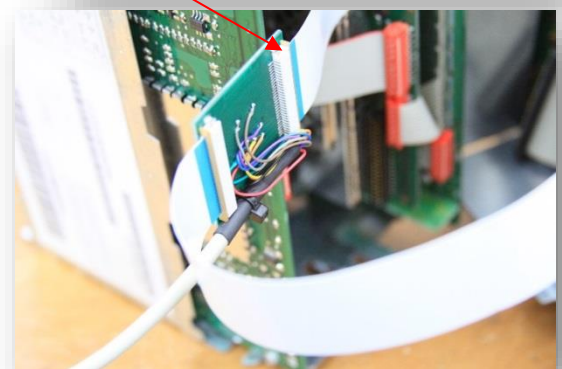
3. Carefully disconnect the ribbon that connects to the screen indicated by the red arrow. Disconnect the other 2 cables indicated by the yellow arrows.



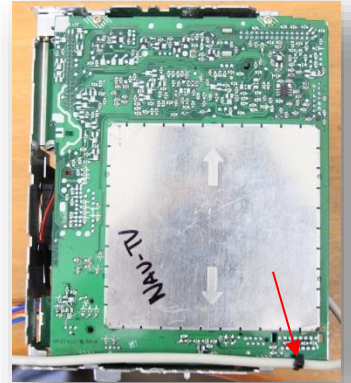
4. Insert the free end of the ribbon from the BNT board into the radio's display connector (near 2 small caps). Be certain the pins are facing the correct direction, and that it is seated firmly.



5. Connect the free end of the Factory LCD ribbon that was disconnected in step 3 to the other side of the BNT board.



6. Use 3M double sided stick tape (or equivalent measure) to secure the BNT board down to a nearby flat surface.
7. Remove the top metal cover from the back half of the radio. Run the RGB cable (leave slack) on the top, left side of the radio like shown. Use a small zip tie to secure the cable from being pulled.

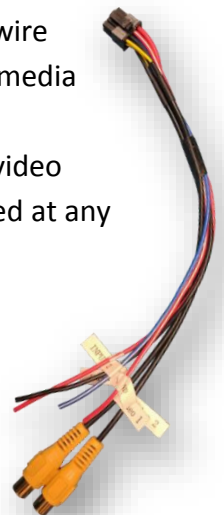


8. Replace the top metal cover to the back half of the radio. The RGB cable should fit through an unused access hole like shown.
9. Connect the free end of the RGB cable to the 10-pin port on the BNT module.



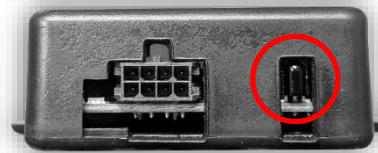
#### RGB-BNTv2 Power Connections

1. From the provided **RGB Power Harness**, connect the **black wire** to chassis ground (-) and the **red wire** to an ACC 12v (+) source (cigarette lighter, etc).
2. Connect the **white/red wire (INPUT 1)** to a 12v (+) reverse wire. Any time this wire receives 12v (+), the video signal provided to **VIDEO 1** will be displayed on the media screen (while in NAV mode from the radio).
3. **Optional:** If adding a secondary AUX Video source to this vehicle, connect the video signal RCA to the **VIDEO 2** port on the *Power Harness*. This source can be viewed at any time when the **white/blue (INPUT 2)** wire receives 12v (+).

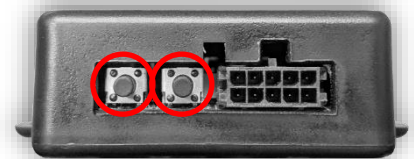


## RGB-BNTv2 Remote Control / Brightness Setting

- The RGBv2 uses a (provided) remote for the following optional adjustments:
  - Arrow keys adjust VIDEO 1 or 2 image *LEFT, RIGHT, UP & DOWN* (*OEM pass through image is not adjustable*)
  - Zoom/Page arrows adjust brightness
  - Pressing *MENU>MAP>BACK* (in order) will *default* all settings.



- To adjust brightness of VIDEO 1 or 2 image, use the buttons on the RGB side of the module and adjust to suit. *NOTE: when completing install, mount the RGBv2 module so that the buttons are not being pressed.*



## RGB-BNTv2 Operation

After all connections are properly made:

- When the vehicle is placed into reverse (white/red wire on the interface receives 12v +), the navigation screen will switch to **Video 1** source (reverse camera).
- In any other gear (but reverse) toggling the white/blue wire (12v (+) to the white/blue wire) will switch the factory navigation screen to **Video 2** source\*.

---

# NAV-TV

INTERFACING THE FUTURE

