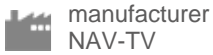
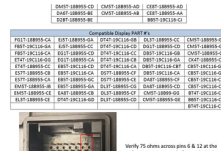
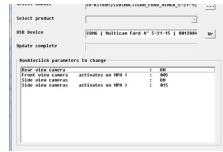


Ford 4" MULTI-CAM V2

Price: **\$549.00**



manufacturer
NAV-TV



SKU NTV-KIT609



weight
2.00 Lbs



market
USA, Rest of
World, Europe



UPC/EAN
00616909359370

The Ford 4" MULTI-CAM interfaces up to 5 cameras & 1 Auxiliary Video source to the OEM 4" media screen in select Ford vehicles. All connected cameras are activated through factory controls. Turn signal camera activation is speed adjustable via programming from a provided USB-Updater (via PC).

NOTE: Verify OEM 4" screen compatibility via model number AND termination resistance before ordering! (see image 4)

Connection Type: CAN data filtering

Plug & Play: No

Activation: Automatic (rear cam and side-cams) & wire triggers (force cams)

Video Inputs: 6 composite (rear cam, front cam, side cams, trailer cam, aux vid)

Video Outputs: None

Audio Inputs: None

Audio Outputs: None

Car Radio Versions

Ford 4" FULL COLOR Screen

Ford 4" MULTI-CAM V2 Compatibility Chart

Model	Year Range	Version	Radio	Notes
Ford/Edge	2011-2017	USA, Rest of World, Europe	Ford 4" FULL COLOR Screen	Verify compatibility (see image 4)
Ford/Expedition	2015-2016	USA, Rest of World, Europe	Ford 4" FULL COLOR Screen	Verify compatibility (see image 4)
Ford/Explorer	2011-2016	USA, Rest of World, Europe	Ford 4" FULL COLOR Screen	Verify compatibility (see image 4)
Ford/F-150	2013-2014	USA, Rest of World, Europe	Ford 4" FULL COLOR Screen	Verify compatibility (see image 4)
Ford/Flex	2013-2016	USA, Rest of World, Europe	Ford 4" FULL COLOR Screen	Verify compatibility (see image 4)

Ford/Fusion	2013-2016	USA, Rest of World, Europe	Ford 4" FULL COLOR Screen	Verify compatibility (see image 4)
Ford/Mustang	2015-2015	USA, Rest of World, Europe	Ford 4" FULL COLOR Screen	Verify compatibility (see image 4)
Ford/Taurus	2013-2016	USA, Rest of World, Europe	Ford 4" FULL COLOR Screen	Verify compatibility (see image 4)
Lincoln/MKZ	2013-2016	USA, Rest of World, Europe	Ford 4" FULL COLOR Screen	Verify compatibility (see image 4)
Lincoln/Navigator	2015-2016	USA, Rest of World, Europe	Ford 4" FULL COLOR Screen	Verify compatibility (see image 4)

<http://app.navtv.com>